

Table 1.5
Age-Adjusted SEER Incidence and U.S. Death Rates and 5-Year Relative Survival (Percent)
By Primary Cancer Site, Sex and Time Period

All Races									
Site	Incidence ^a (2011-2015)			US Mortality ^b (2011-2015)			Survival ^c (%) (2008-2014)		
	Total	Males	Females	Total	Males	Females	Total	Males	Females
All Sites	439.2	483.0	409.9	163.5	196.8	139.6	66.9	66.4	67.5
Oral Cavity & Pharynx:	11.3	17.1	6.3	2.5	3.9	1.3	64.8	64.0	66.9
Lip	0.7	1.1	0.3	0.0	0.0	0.0	88.4	88.2	89.3
Tongue	3.4	5.2	1.8	0.6	0.9	0.4	65.8	66.1	64.8
Salivary gland	1.3	1.7	1.0	0.3	0.4	0.1	71.6	64.0	82.1
Floor of mouth	0.5	0.7	0.3	0.0	0.0	0.0	52.9	51.9	55.2
Gum & other oral cavity	1.5	1.8	1.3	0.4	0.5	0.3	59.2	55.2	64.3
Nasopharynx	0.6	0.9	0.4	0.2	0.3	0.1	61.6	59.4	66.8
Tonsil	2.0	3.4	0.7	0.2	0.4	0.1	73.9	74.5	70.9
Oropharynx	0.4	0.7	0.2	0.3	0.4	0.1	45.8	47.1	40.8
Hypopharynx	0.6	1.0	0.2	0.1	0.2	0.0	32.9	32.9	32.5
Other oral cavity & pharynx	0.3	0.4	0.1	0.4	0.7	0.2	45.1	47.7	35.5
Digestive System:	81.1	98.8	66.3	41.3	53.0	31.7	43.5	41.2	46.3
Esophagus	4.2	7.2	1.7	4.0	7.2	1.5	19.2	18.9	20.0
Stomach	7.2	9.8	5.2	3.2	4.3	2.3	31.0	28.4	35.1
Small intestine	2.3	2.6	2.0	0.4	0.5	0.3	67.6	66.8	68.4
Colon & Rectum:	39.4	45.2	34.5	14.5	17.3	12.2	64.5	64.1	64.9
Colon	27.7	30.7	25.3	-	-	-	63.6	63.6	63.6
Rectum	11.7	14.6	9.2	-	-	-	66.6	65.2	68.6
Anus, anal canal & anorectum	1.8	1.5	2.1	0.3	0.2	0.3	67.4	60.8	71.4
Liver & intrahepatic bile duct	8.8	13.6	4.7	6.4	9.4	3.8	17.7	17.5	18.4
Gallbladder	1.2	0.9	1.4	0.6	0.5	0.7	18.2	18.4	18.1
Other biliary	1.9	2.3	1.5	0.4	0.5	0.4	17.5	18.8	16.1
Pancreas	12.6	14.4	11.2	10.9	12.6	9.5	8.5	8.8	8.3
Retroperitoneum	0.4	0.4	0.4	0.1	0.1	0.1	54.2	52.9	55.4
Peritoneum, omentum & mesentery	0.5	0.1	0.9	0.3	0.1	0.4	32.0	38.2	31.5
Other digestive system	0.7	0.8	0.6	0.3	0.4	0.3	8.6	7.1	10.2
Respiratory System:	58.5	70.2	49.5	44.6	56.0	35.9	21.6	20.2	23.3
Nose, nasal cavity & middle ear	0.7	0.9	0.5	0.1	0.2	0.1	58.2	59.2	56.6
Larynx	3.0	5.2	1.1	1.0	1.8	0.4	60.9	61.4	58.4
Lung & bronchus	54.6	63.8	47.8	43.4	53.8	35.4	18.6	15.5	22.0
Pleura ^d	0.0	0.0	0.0	0.1	0.1	0.0	26.2	24.7	28.3
Trachea & other respiratory organs	0.2	0.2	0.1	0.1	0.1	0.0	53.2	53.6	52.2
Bones & joints	0.9	1.1	0.8	0.4	0.5	0.3	66.9	65.1	69.2
Soft tissue (including heart)	3.4	4.1	2.9	1.3	1.5	1.2	64.5	63.8	65.3
Skin (excl. basal & squamous):	24.9	32.7	19.2	3.6	5.6	2.1	91.2	89.3	93.6
Melanoma of the skin	22.8	29.8	17.7	2.6	3.9	1.6	91.8	89.9	94.2
Other non-epithelial skin	2.1	2.9	1.5	1.0	1.7	0.5	84.3	82.5	86.7
Breast	67.5	1.2	126.0	11.6	0.3	20.9	89.6	83.0	89.7
Breast (<i>in situ</i>)	16.4	0.1	31.1	-	-	-	100.0	100.0	100.0

Note: Incidence and death rates are per 100,000 and are age-adjusted to the 2000 US Std Population (19 age groups - Census P25-1130).

^a SEER 18 areas (San Francisco, Connecticut, Detroit, Hawaii, Iowa, New Mexico, Seattle, Utah, Atlanta, San Jose-Monterey, Los Angeles, Alaska Native Registry, Rural Georgia, California excluding SF/SJM/LA, Kentucky, Louisiana, New Jersey and Georgia excluding ATL/RG).

^b US Mortality Files, National Center for Health Statistics, Centers for Disease Control and Prevention.

^c SEER 18 areas. Based on follow-up of patients into 2015. [Expected survival rates](#) are derived from life tables by socio-economic status, geography and race developed by the SEER program.

^d Mesotheliomas of the Pleura are included in the separate group Mesothelioma for incidence but are included in the Pleura grouping for mortality.

- Statistic could not be calculated due to less than 16 cases in the time interval.

Table 1.5 - continued
Age-Adjusted SEER Incidence and U.S. Death Rates and 5-Year Relative Survival (Percent)
By Primary Cancer Site, Sex and Time Period

All Races									
Site	Incidence ^a (2011-2015)			US Mortality ^b (2011-2015)			Survival ^c (%) (2008-2014)		
	Total	Males	Females	Total	Males	Females	Total	Males	Females
Female Genital System:	26.2	-	49.4	8.3	-	15.1	69.3	-	69.3
Cervix uteri	3.8	-	7.4	1.2	-	2.3	66.2	-	66.2
Corpus uteri	13.3	-	25.2	1.1	-	2.0	82.5	-	82.5
Uterus, NOS	0.4	-	0.8	1.5	-	2.7	29.6	-	29.6
Ovary ^d	6.2	-	11.6	4.0	-	7.2	47.4	-	47.4
Vagina	0.4	-	0.7	0.1	-	0.2	47.0	-	47.0
Vulva	1.4	-	2.5	0.3	-	0.5	71.0	-	71.0
Other female genital system	0.7	-	1.3	0.2	-	0.3	53.6	-	53.6
Male Genital System:	54.9	119.6	-	8.1	20.0	-	97.9	97.9	-
Prostate	51.5	112.6	-	7.9	19.5	-	98.2	98.2	-
Testis	2.9	5.7	-	0.1	0.2	-	95.3	95.3	-
Penis	0.4	0.9	-	0.1	0.2	-	67.2	67.2	-
Other male genital system	0.1	0.3	-	0.0	0.0	-	84.9	84.9	-
Urinary System:	36.3	57.4	19.8	8.5	13.6	4.7	75.3	75.9	73.8
Urinary bladder	19.5	34.3	8.3	4.4	7.6	2.2	76.8	78.1	72.9
Kidney & renal pelvis	15.9	21.7	10.9	3.8	5.6	2.4	74.5	73.7	75.8
Ureter	0.5	0.8	0.4	0.1	0.2	0.1	47.1	48.3	45.4
Other urinary system	0.4	0.6	0.2	0.1	0.2	0.1	48.6	54.2	37.7
Eye & Orbit	0.9	1.0	0.7	0.1	0.1	0.1	82.9	82.4	83.6
Brain & Nervous System: ^e	6.4	7.5	5.4	4.4	5.3	3.6	33.2	32.0	34.7
Brain	6.0	7.1	5.0	-	-	-	30.1	29.4	31.1
Cranial nerves & other nervous system	0.4	0.4	0.4	-	-	-	78.9	75.6	82.0
Endocrine System:	15.2	8.1	22.1	0.8	0.8	0.7	96.3	92.1	97.7
Thyroid	14.5	7.3	21.4	0.5	0.5	0.5	98.1	95.6	98.8
Other endocrine & thymus	0.7	0.8	0.7	0.3	0.3	0.3	64.5	64.5	64.4
Lymphoma:	21.9	26.5	18.2	6.1	7.9	4.7	73.5	72.0	75.3
Hodgkin lymphoma	2.5	2.9	2.2	0.3	0.4	0.3	86.6	85.7	87.7
Non-Hodgkin lymphoma	19.4	23.6	15.9	5.7	7.4	4.5	71.4	69.9	73.3
Myeloma	6.7	8.4	5.3	3.3	4.2	2.7	50.7	50.6	50.9
Leukemia:	13.8	17.6	10.8	6.7	9.0	5.0	61.4	62.5	60.0
Lymphocytic:	6.8	9.0	5.1	1.8	2.6	1.3	79.7	80.3	78.8
Acute lymphocytic	1.7	1.9	1.6	0.4	0.5	0.4	68.1	67.8	68.5
Chronic lymphocytic	4.7	6.4	3.3	1.3	1.9	0.8	84.2	84.4	83.8
Other lymphocytic	0.4	0.6	0.2	0.1	0.2	0.1	81.3	85.0	70.2
Myeloid & Monocytic:	6.4	8.0	5.2	3.3	4.4	2.6	40.4	40.1	40.7
Acute myeloid	4.3	5.2	3.6	2.8	3.6	2.2	27.4	26.3	28.6
Chronic myeloid	1.8	2.4	1.4	0.3	0.4	0.2	67.6	66.4	69.3
Acute monocytic	0.2	0.2	0.2	0.0	0.0	0.0	23.2	21.3	25.4
Other myeloid & monocytic	0.2	0.2	0.1	0.2	0.3	0.2	34.5	36.7	31.5
Other leukemia:	0.5	0.6	0.4	1.5	2.0	1.1	33.9	33.2	34.5
Other acute leukemia	0.2	0.3	0.2	0.5	0.7	0.4	23.5	23.5	23.4
Aleukemic, subleukemic & NOS	0.3	0.3	0.2	1.0	1.4	0.8	41.4	40.6	42.1
Kaposi Sarcoma ^f	0.5	0.9	0.1	-	-	-	74.1	73.9	73.5
Mesothelioma ^f	0.9	1.6	0.4	-	-	-	9.4	7.0	16.6
Ill-defined & unspecified	7.9	9.2	6.9	11.9	15.1	9.5	18.2	21.6	14.8

Note: Incidence and death rates are per 100,000 and are age-adjusted to the 2000 US Std Population (19 age groups - Census P25-1130).

^a SEER 18 areas (San Francisco, Connecticut, Detroit, Hawaii, Iowa, New Mexico, Seattle, Utah, Atlanta, San Jose-Monterey, Los Angeles, Alaska Native Registry, Rural Georgia, California excluding SF/SJM/LA, Kentucky, Louisiana, New Jersey and Georgia excluding ATL/RG).

^b US Mortality Files, National Center for Health Statistics, Centers for Disease Control and Prevention.

^c SEER 18 areas. Based on follow-up of patients into 2015. [Expected survival rates](#) are derived from life tables by socio-economic status, geography and race developed by the SEER program.

^d Ovary excludes borderline cases or histologies 8442, 8451, 8462, 8472, and 8473.

^e Due to coding changes, Brain & Nervous System mortality are no longer shown separately.

^f Rate not shown for mortality. Category did not exist in mortality coding until 1999.

- Statistic could not be calculated due to less than 16 cases in the time interval.

Table 1.6
Age-Adjusted SEER Incidence and U.S. Death Rates and 5-Year Relative Survival (Percent)
By Primary Cancer Site, Sex and Time Period

Whites									
Site	Incidence ^a (2011-2015)			US Mortality ^b (2011-2015)			Survival ^c (%) (2008-2014)		
	Total	Males	Females	Total	Males	Females	Total	Males	Females
All Sites	448.8	488.5	423.1	163.8	196.4	140.0	67.3	66.5	68.1
Oral Cavity & Pharynx:	11.9	18.0	6.5	2.5	3.8	1.3	66.3	65.8	67.5
Lip	0.8	1.3	0.4	0.0	0.0	0.0	88.4	88.0	89.5
Tongue	3.8	5.7	2.0	0.6	1.0	0.4	67.5	68.0	66.0
Salivary gland	1.3	1.8	1.0	0.3	0.4	0.1	69.4	61.8	80.8
Floor of mouth	0.5	0.7	0.3	0.0	0.0	0.0	54.4	53.0	57.3
Gum & other oral cavity	1.5	1.8	1.3	0.4	0.5	0.3	58.9	55.2	63.5
Nasopharynx	0.4	0.6	0.2	0.1	0.2	0.1	58.5	57.1	61.9
Tonsil	2.2	3.8	0.8	0.2	0.4	0.1	75.5	75.9	73.3
Oropharynx	0.5	0.8	0.2	0.3	0.4	0.1	49.3	51.0	42.4
Hypopharynx	0.6	1.0	0.2	0.1	0.2	0.0	35.9	36.0	35.0
Other oral cavity & pharynx	0.3	0.5	0.1	0.4	0.7	0.2	49.1	51.6	39.6
Digestive System:	79.1	96.1	64.7	40.2	51.6	30.7	43.9	41.6	46.8
Esophagus	4.5	7.7	1.7	4.3	7.6	1.5	19.9	19.9	20.3
Stomach	6.5	8.9	4.5	2.8	3.7	2.0	29.6	27.0	34.2
Small intestine	2.2	2.6	1.9	0.4	0.4	0.3	68.5	67.2	69.9
Colon & Rectum:	38.8	44.4	34.0	14.1	16.8	11.9	65.0	64.7	65.4
Colon	27.3	30.1	24.9	-	-	-	64.5	64.4	64.5
Rectum	11.5	14.2	9.1	-	-	-	66.3	65.3	67.8
Anus, anal canal & anorectum	2.0	1.5	2.4	0.3	0.2	0.3	69.0	62.5	72.6
Liver & intrahepatic bile duct	8.0	12.2	4.3	6.0	8.7	3.6	17.0	16.9	17.5
Gallbladder	1.1	0.8	1.4	0.6	0.4	0.7	18.1	17.7	18.3
Other biliary	1.8	2.3	1.5	0.4	0.5	0.4	17.6	19.5	15.3
Pancreas	12.6	14.4	11.1	10.8	12.6	9.4	8.4	8.7	8.0
Retroperitoneum	0.4	0.4	0.3	0.1	0.1	0.1	53.5	52.6	54.4
Peritoneum, omentum & mesentery	0.6	0.1	1.0	0.3	0.1	0.4	31.5	36.9	31.0
Other digestive system	0.7	0.8	0.6	0.3	0.4	0.3	8.9	7.0	10.6
Respiratory System:	60.0	70.4	52.0	45.4	56.0	37.2	21.8	20.4	23.3
Nose, nasal cavity & middle ear	0.7	0.9	0.5	0.1	0.2	0.1	60.3	62.2	57.4
Larynx	3.0	5.3	1.1	1.0	1.7	0.4	62.1	62.7	59.6
Lung & bronchus	56.1	63.9	50.2	44.1	53.9	36.6	18.7	15.7	22.0
Pleura ^d	0.0	0.0	0.0	0.1	0.1	0.0	21.4	25.0	14.1
Trachea & other respiratory organs	0.2	0.3	0.1	0.1	0.1	0.0	53.5	53.7	53.0
Bones & joints	1.0	1.2	0.9	0.5	0.6	0.4	66.8	64.8	69.4
Soft tissue (including heart)	3.5	4.2	2.9	1.3	1.6	1.1	65.1	64.3	66.1
Skin (excl. basal & squamous):	29.5	38.3	23.0	4.1	6.3	2.4	90.5	88.5	93.2
Melanoma of the skin	27.3	35.2	21.5	3.0	4.5	1.9	91.2	89.2	93.8
Other non-epithelial skin	2.2	3.1	1.5	1.1	1.8	0.5	81.8	80.1	84.1
Breast	68.1	1.2	128.6	11.2	0.3	20.3	90.6	84.9	90.6
Breast (<i>in situ</i>)	16.0	0.1	30.8	-	-	-	100.0	99.9	100.0

Note: Incidence and death rates are per 100,000 and are age-adjusted to the 2000 US Std Population (19 age groups - Census P25-1130).

^a SEER 18 areas (San Francisco, Connecticut, Detroit, Hawaii, Iowa, New Mexico, Seattle, Utah, Atlanta, San Jose-Monterey, Los Angeles, Alaska Native Registry, Rural Georgia, California excluding SF/SJM/LA, Kentucky, Louisiana, New Jersey and Georgia excluding ATL/RG).

^b US Mortality Files, National Center for Health Statistics, Centers for Disease Control and Prevention.

^c SEER 18 areas. Based on follow-up of patients into 2015. [Expected survival rates](#) are derived from life tables by socio-economic status, geography and race developed by the SEER program.

^d Mesotheliomas of the Pleura are included in the separate group Mesothelioma for incidence but are included in the Pleura grouping for mortality.

- Statistic could not be calculated due to less than 16 cases in the time interval.

Table 1.6 - continued
Age-Adjusted SEER Incidence and U.S. Death Rates and 5-Year Relative Survival (Percent)
By Primary Cancer Site, Sex and Time Period

Whites									
Site	Incidence ^a (2011-2015)			US Mortality ^b (2011-2015)			Survival ^c (%) (2008-2014)		
	Total	Males	Females	Total	Males	Females	Total	Males	Females
Female Genital System:	26.7	-	50.9	8.1	-	15.0	70.7	-	70.7
Cervix uteri	3.7	-	7.4	1.1	-	2.2	67.7	-	67.7
Corpus uteri	13.6	-	25.9	1.0	-	1.9	84.6	-	84.6
Uterus, NOS	0.4	-	0.8	1.3	-	2.4	32.5	-	32.5
Ovary ^d	6.4	-	12.1	4.1	-	7.5	47.4	-	47.4
Vagina	0.4	-	0.7	0.1	-	0.2	47.2	-	47.2
Vulva	1.5	-	2.7	0.3	-	0.6	70.4	-	70.4
Other female genital system	0.7	-	1.3	0.2	-	0.3	52.4	-	52.4
Male Genital System:	52.9	113.7	-	7.6	18.7	-	98.0	98.0	-
Prostate	48.9	105.7	-	7.4	18.2	-	98.3	98.3	-
Testis	3.5	6.8	-	0.1	0.3	-	95.4	95.4	-
Penis	0.4	0.9	-	0.1	0.2	-	67.0	67.0	-
Other male genital system	0.1	0.3	-	0.0	0.0	-	86.2	86.2	-
Urinary System:	38.7	61.2	20.8	8.8	14.2	4.8	75.6	76.1	74.4
Urinary bladder	21.5	37.6	8.9	4.6	8.0	2.2	77.3	78.3	74.1
Kidney & renal pelvis	16.3	22.2	11.3	4.0	5.8	2.5	74.4	73.6	75.8
Ureter	0.6	0.8	0.4	0.1	0.2	0.1	48.2	48.8	47.4
Other urinary system	0.4	0.6	0.2	0.1	0.2	0.1	49.4	53.5	39.9
Eye & Orbit	1.0	1.2	0.9	0.1	0.1	0.1	82.0	81.4	82.8
Brain & Nervous System: ^e	7.1	8.3	6.0	4.8	5.8	3.9	32.0	30.7	33.6
Brain	6.6	7.9	5.6	-	-	-	29.0	28.2	30.0
Cranial nerves & other nervous system	0.4	0.4	0.4	-	-	-	80.0	76.3	83.6
Endocrine System:	15.9	8.6	23.4	0.8	0.8	0.7	96.7	92.7	98.0
Thyroid	15.3	7.8	22.8	0.5	0.5	0.5	98.3	95.8	99.0
Other endocrine & thymus	0.7	0.8	0.6	0.3	0.3	0.3	63.5	63.9	63.1
Lymphoma:	23.0	27.7	19.1	6.3	8.2	4.9	73.7	72.3	75.5
Hodgkin lymphoma	2.7	3.0	2.4	0.3	0.4	0.3	86.9	86.2	87.7
Non-Hodgkin lymphoma	20.3	24.7	16.8	6.0	7.7	4.6	71.8	70.2	73.6
Myeloma	6.1	7.9	4.7	3.1	4.0	2.4	50.0	50.1	49.8
Leukemia:	14.6	18.6	11.4	6.9	9.3	5.2	61.8	62.7	60.6
Lymphocytic:	7.4	9.7	5.5	1.9	2.7	1.3	79.9	80.4	79.3
Acute lymphocytic	1.9	2.1	1.7	0.5	0.6	0.4	68.2	67.5	69.1
Chronic lymphocytic	5.1	6.9	3.6	1.3	2.0	0.9	84.2	84.4	83.9
Other lymphocytic	0.4	0.7	0.2	0.1	0.2	0.1	82.2	85.7	71.6
Myeloid & Monocytic:	6.7	8.3	5.4	3.5	4.6	2.7	39.5	39.1	39.9
Acute myeloid	4.4	5.4	3.7	2.9	3.8	2.2	26.9	25.9	28.0
Chronic myeloid	1.9	2.4	1.4	0.3	0.4	0.2	66.4	65.4	68.0
Acute monocytic	0.2	0.3	0.2	0.0	0.0	0.0	23.8	21.7	26.4
Other myeloid & monocytic	0.2	0.2	0.1	0.2	0.3	0.2	32.0	32.6	31.2
Other leukemia:	0.5	0.6	0.4	1.5	2.1	1.2	33.7	32.3	35.1
Other acute leukemia	0.2	0.3	0.2	0.5	0.7	0.4	23.4	23.8	22.8
Aleukemic, subleukemic & NOS	0.3	0.3	0.2	1.0	1.4	0.8	41.8	39.2	44.2
Kaposi Sarcoma ^f	0.4	0.7	0.1	-	-	-	77.2	76.3	81.7
Mesothelioma ^f	1.0	1.8	0.5	-	-	-	9.2	7.0	15.9
Ill-defined & unspecified	8.1	9.4	7.0	12.1	15.3	9.6	18.9	22.9	14.8

Note: Incidence and death rates are per 100,000 and are age-adjusted to the 2000 US Std Population (19 age groups - Census P25-1130).

^a SEER 18 areas (San Francisco, Connecticut, Detroit, Hawaii, Iowa, New Mexico, Seattle, Utah, Atlanta, San Jose-Monterey, Los Angeles, Alaska Native Registry, Rural Georgia, California excluding SF/SJM/LA, Kentucky, Louisiana, New Jersey and Georgia excluding ATL/RG).

^b US Mortality Files, National Center for Health Statistics, Centers for Disease Control and Prevention.

^c SEER 18 areas. Based on follow-up of patients into 2015. [Expected survival rates](#) are derived from life tables by socio-economic status, geography and race developed by the SEER program.

^d Ovary excludes borderline cases or histologies 8442, 8451, 8462, 8472, and 8473.

^e Due to coding changes, Brain & Nervous System mortality are no longer shown separately.

^f Rate not shown for mortality. Category did not exist in mortality coding until 1999.

- Statistic could not be calculated due to less than 16 cases in the time interval.

Table 1.7
Age-Adjusted SEER Incidence and U.S. Death Rates and 5-Year Relative Survival (Percent)
By Primary Cancer Site, Sex and Time Period

Blacks									
Site	Incidence ^a (2011-2015)			US Mortality ^b (2011-2015)			Survival ^c (%) (2008-2014)		
	Total	Males	Females	Total	Males	Females	Total	Males	Females
All Sites	453.4	535.0	397.8	189.8	239.9	159.0	61.5	63.6	59.1
Oral Cavity & Pharynx:	9.0	14.0	5.1	2.8	4.8	1.3	48.1	46.0	53.0
Lip	0.1	0.1	-	-	-	-	67.9	66.8	-
Tongue	2.1	3.3	1.1	0.5	0.9	0.3	43.1	42.9	43.7
Salivary gland	1.0	1.1	1.0	0.2	0.3	0.1	76.5	70.5	81.8
Floor of mouth	0.5	0.9	0.2	0.0	0.0	-	40.3	43.4	31.4
Gum & other oral cavity	1.3	1.7	1.0	0.3	0.5	0.2	55.8	49.5	62.5
Nasopharynx	0.7	1.0	0.4	0.2	0.4	0.1	57.0	57.4	55.1
Tonsil	1.6	2.9	0.6	0.2	0.4	0.1	55.6	57.2	48.3
Oropharynx	0.6	0.9	0.3	0.4	0.7	0.2	27.5	27.0	29.2
Hypopharynx	0.9	1.6	0.3	0.2	0.3	0.0	18.1	18.2	16.8
Other oral cavity & pharynx	0.3	0.5	0.1	0.7	1.3	0.3	26.3	29.1	16.5
Digestive System:	98.4	120.9	81.6	53.1	69.6	41.2	39.4	35.8	43.3
Esophagus	4.0	6.4	2.2	3.5	5.8	1.8	12.9	11.4	16.2
Stomach	10.1	13.6	7.7	5.7	8.3	3.9	31.1	26.4	37.0
Small intestine	3.8	4.2	3.5	0.6	0.7	0.5	64.0	64.0	63.8
Colon & Rectum:	47.6	55.5	41.9	19.4	24.4	16.1	57.8	55.7	59.8
Colon	35.4	40.2	32.0	-	-	-	56.0	55.0	56.9
Rectum	12.2	15.3	9.9	-	-	-	62.6	57.3	68.7
Anus, anal canal & anorectum	1.9	2.1	1.8	0.3	0.3	0.2	58.1	52.9	63.4
Liver & intrahepatic bile duct	10.5	17.3	5.1	8.3	13.2	4.6	14.0	13.3	16.2
Gallbladder	1.6	1.3	1.9	0.9	0.7	1.0	16.5	15.3	17.0
Other biliary	1.7	2.0	1.5	0.4	0.4	0.4	13.7	11.0	16.0
Pancreas	15.5	16.9	14.3	13.3	14.8	12.2	8.6	7.6	9.5
Retroperitoneum	0.4	0.4	0.4	0.1	0.1	0.0	55.3	58.9	52.9
Peritoneum, omentum & mesentery	0.4	0.1	0.6	0.2	0.1	0.3	27.4	33.8	26.5
Other digestive system	0.9	1.0	0.8	0.4	0.6	0.3	6.5	6.0	6.4
Respiratory System:	66.6	90.6	50.0	48.1	68.7	34.2	19.3	17.7	21.3
Nose, nasal cavity & middle ear	0.6	0.9	0.4	0.1	0.2	0.1	49.6	44.1	56.6
Larynx	4.4	8.3	1.5	1.7	3.3	0.5	52.0	52.5	50.0
Lung & bronchus	61.4	81.2	47.9	46.2	65.1	33.5	16.2	13.2	19.8
Pleura ^d	-	-	-	0.0	0.1	0.0	-	-	-
Trachea & other respiratory organs	0.1	0.2	0.1	0.1	0.1	0.0	45.7	46.8	42.8
Bones & joints	0.7	0.8	0.6	0.4	0.5	0.4	65.2	66.0	64.2
Soft tissue (including heart)	3.4	3.6	3.3	1.5	1.5	1.5	59.7	59.7	59.8
Skin (excl. basal & squamous):	2.1	2.2	2.0	0.8	1.2	0.6	81.5	77.2	84.6
Melanoma of the skin	1.1	1.1	1.0	0.4	0.5	0.3	65.2	57.1	71.0
Other non-epithelial skin	1.0	1.1	1.0	0.4	0.7	0.2	93.5	90.6	95.4
Breast	72.0	1.7	126.9	16.8	0.5	28.7	81.1	70.9	81.2
Breast (<i>in situ</i>)	18.0	0.3	32.1	-	-	-	100.0	78.3	100.0

Note: Incidence and death rates are per 100,000 and are age-adjusted to the 2000 US Std Population (19 age groups - Census P25-1130).

^a SEER 18 areas (San Francisco, Connecticut, Detroit, Hawaii, Iowa, New Mexico, Seattle, Utah, Atlanta, San Jose-Monterey, Los Angeles, Alaska Native Registry, Rural Georgia, California excluding SF/SJM/LA, Kentucky, Louisiana, New Jersey and Georgia excluding ATL/RG).

^b US Mortality Files, National Center for Health Statistics, Centers for Disease Control and Prevention.

^c SEER 18 areas. Based on follow-up of patients into 2015. [Expected survival rates](#) are derived from life tables by socio-economic status, geography and race developed by the SEER program.

^d Mesotheliomas of the Pleura are included in the separate group Mesothelioma for incidence but are included in the Pleura grouping for mortality.

- Statistic could not be calculated due to less than 16 cases in the time interval.

Table 1.7 - continued
Age-Adjusted SEER Incidence and U.S. Death Rates and 5-Year Relative Survival (Percent)
By Primary Cancer Site, Sex and Time Period

Blacks									
Site	Incidence ^a (2011-2015)			US Mortality ^b (2011-2015)			Survival ^c (%) (2008-2014)		
	Total	Males	Females	Total	Males	Females	Total	Males	Females
Female Genital System:	26.4	-	46.8	11.2	-	19.2	55.7	-	55.7
Cervix uteri	4.6	-	8.4	2.1	-	3.7	55.5	-	55.5
Corpus uteri	13.5	-	23.8	1.9	-	3.3	64.0	-	64.0
Uterus, NOS	0.9	-	1.5	3.0	-	5.1	20.6	-	20.6
Ovary ^d	5.3	-	9.3	3.7	-	6.3	38.5	-	38.5
Vagina	0.6	-	1.0	0.2	-	0.3	45.0	-	45.0
Vulva	1.0	-	1.7	0.2	-	0.3	71.8	-	71.8
Other female genital system	0.5	-	0.9	0.2	-	0.3	56.2	-	56.2
Male Genital System:	77.7	181.2	-	14.8	40.3	-	95.9	95.9	-
Prostate	76.4	178.3	-	14.6	39.9	-	96.1	96.1	-
Testis	0.7	1.5	-	0.1	0.1	-	91.8	91.8	-
Penis	0.4	1.0	-	0.1	0.2	-	58.4	58.4	-
Other male genital system	0.1	0.3	-	0.0	0.1	-	63.4	63.4	-
Urinary System:	31.2	46.8	20.1	7.3	11.1	4.9	70.2	71.1	68.6
Urinary bladder	12.3	20.6	6.7	3.5	5.3	2.4	63.0	67.1	55.0
Kidney & renal pelvis	18.3	25.3	12.8	3.7	5.5	2.4	75.1	74.2	76.3
Ureter	0.2	0.3	0.2	0.0	0.0	0.0	31.9	28.1	33.4
Other urinary system	0.4	0.7	0.3	0.1	0.1	0.1	32.1	44.8	18.0
Eye & Orbit	0.2	0.3	0.3	0.0	0.0	0.0	90.3	86.3	93.2
Brain & Nervous System: ^e	4.0	4.8	3.5	2.6	3.2	2.1	39.5	38.1	40.9
Brain	3.7	4.4	3.1	-	-	-	35.7	35.0	36.6
Cranial nerves & other nervous system	0.4	0.4	0.3	-	-	-	75.2	74.2	75.7
Endocrine System:	9.8	4.7	14.3	0.9	0.8	0.9	93.8	85.5	96.0
Thyroid	8.9	3.8	13.4	0.5	0.4	0.6	97.2	92.9	97.7
Other endocrine & thymus	0.9	0.8	0.9	0.4	0.4	0.3	65.3	63.1	67.1
Lymphoma:	17.0	20.5	14.3	4.5	5.8	3.6	69.7	66.7	73.2
Hodgkin lymphoma	2.6	3.1	2.2	0.3	0.4	0.2	83.9	80.4	87.8
Non-Hodgkin lymphoma	14.4	17.5	12.1	4.2	5.4	3.4	66.2	63.3	69.6
Myeloma	13.4	15.9	11.6	6.2	7.5	5.5	52.1	51.3	52.8
Leukemia:	11.0	14.0	9.0	5.6	7.4	4.5	55.4	56.9	53.6
Lymphocytic:	4.8	6.6	3.5	1.5	2.1	1.1	70.2	72.1	67.4
Acute lymphocytic	1.0	1.0	0.9	0.3	0.4	0.3	63.6	66.0	60.2
Chronic lymphocytic	3.6	5.2	2.5	1.1	1.6	0.7	73.1	74.3	71.2
Other lymphocytic	0.2	0.4	0.1	0.1	0.1	0.1	65.9	70.7	49.2
Myeloid & Monocytic:	5.7	6.8	5.0	2.7	3.4	2.2	43.8	42.7	44.8
Acute myeloid	3.8	4.5	3.3	2.2	2.7	1.8	28.8	26.5	30.9
Chronic myeloid	1.7	2.0	1.4	0.3	0.4	0.2	70.0	67.8	72.3
Acute monocytic	0.1	0.2	0.1	0.0	0.0	-	25.2	21.1	28.4
Other myeloid & monocytic	0.1	0.1	0.1	0.2	0.2	0.1	41.5	48.8	28.2
Other leukemia:	0.5	0.6	0.5	1.5	1.9	1.2	35.2	36.4	33.3
Other acute leukemia	0.2	0.3	0.2	0.4	0.5	0.3	22.0	18.0	27.1
Aleukemic, subleukemic & NOS	0.3	0.3	0.3	1.1	1.4	0.9	40.4	45.0	35.1
Kaposi Sarcoma ^f	1.1	2.1	0.2	-	-	-	63.4	65.4	33.8
Mesothelioma ^f	0.5	0.9	0.3	-	-	-	13.3	7.0	25.8
Ill-defined & unspecified	8.9	10.1	8.0	13.1	17.0	10.5	13.4	12.5	14.1

Note: Incidence and death rates are per 100,000 and are age-adjusted to the 2000 US Std Population (19 age groups - Census P25-1130).

^a SEER 18 areas (San Francisco, Connecticut, Detroit, Hawaii, Iowa, New Mexico, Seattle, Utah, Atlanta, San Jose-Monterey, Los Angeles, Alaska Native Registry, Rural Georgia, California excluding SF/SJM/LA, Kentucky, Louisiana, New Jersey and Georgia excluding ATL/RG).

^b US Mortality Files, National Center for Health Statistics, Centers for Disease Control and Prevention.

^c SEER 18 areas. Based on follow-up of patients into 2015. [Expected survival rates](#) are derived from life tables by socio-economic status, geography and race developed by the SEER program.

^d Ovary excludes borderline cases or histologies 8442, 8451, 8462, 8472, and 8473.

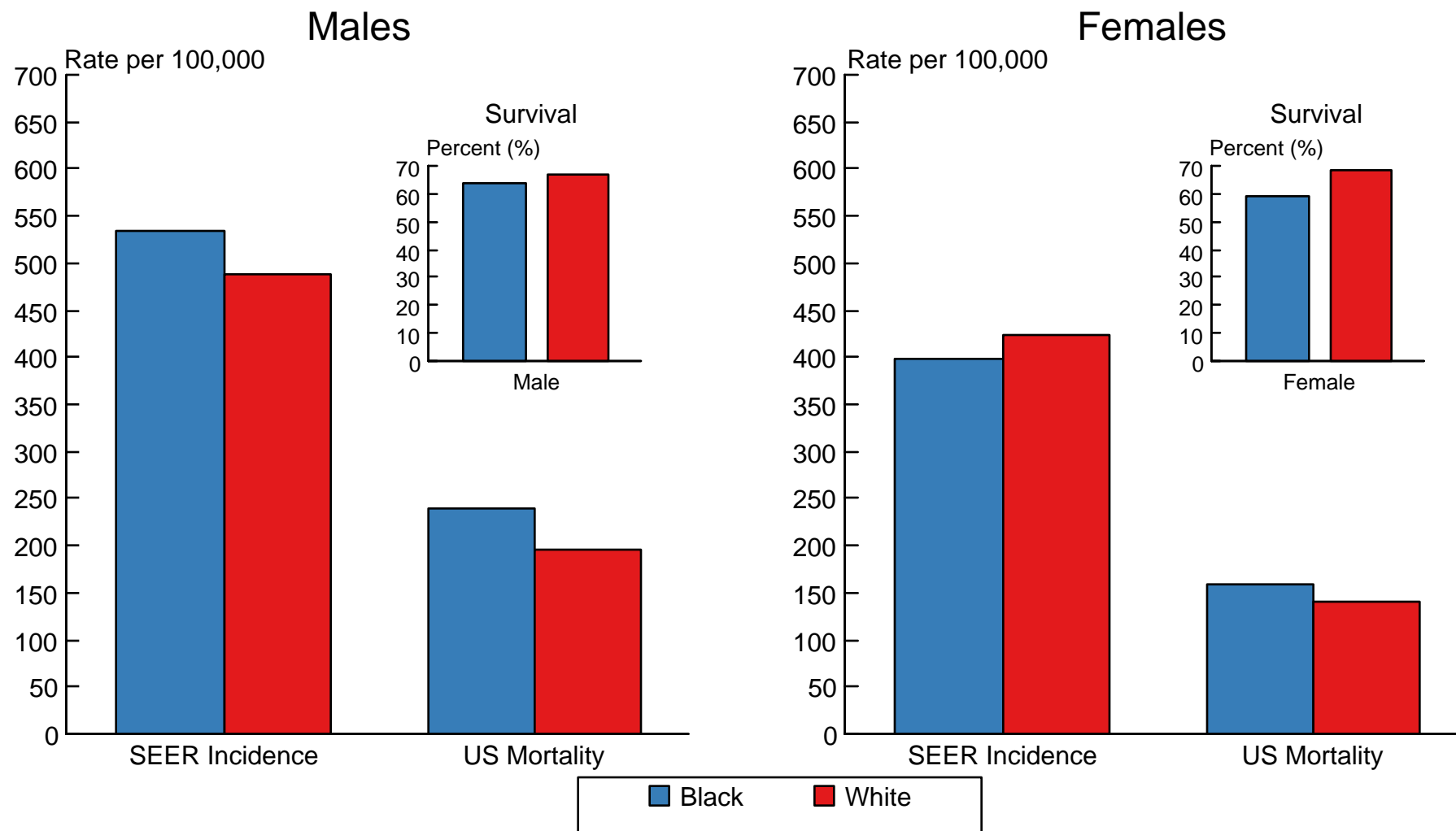
^e Due to coding changes, Brain & Nervous System mortality are no longer shown separately.

^f Rate not shown for mortality. Category did not exist in mortality coding until 1999.

- Statistic could not be calculated due to less than 16 cases in the time interval.

Figure 1.9

SEER Incidence^a and US Death Rates,^b 2011-2015 5-Year Relative Survival,^c 2008-2014 All Cancer Combined, by Race and Sex



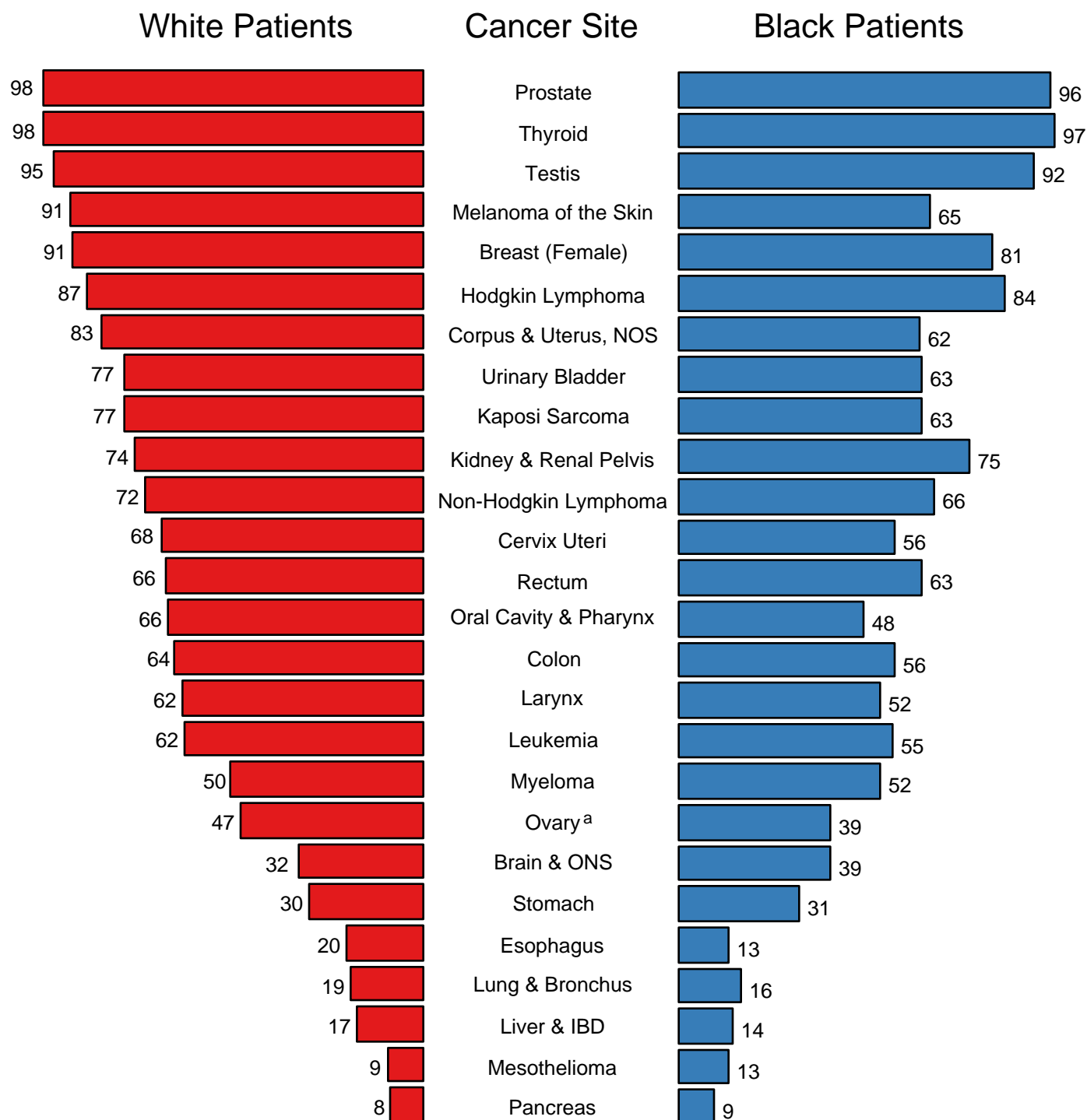
^a Incidence rates are from the SEER 18 areas (San Francisco, Connecticut, Detroit, Hawaii, Iowa, New Mexico, Seattle, Utah, Atlanta, San Jose-Monterey, Los Angeles, Alaska Native Registry, Rural Georgia, California excluding SF/SJM/LA, Kentucky, Louisiana, New Jersey and Georgia excluding ATL/RG) and are age-adjusted to the 2000 US Std Population (19 age groups - Census P25-1103).

^b Death rates are from the US Mortality Files, National Center for Health Statistics, Centers for Disease Control and Prevention and are age-adjusted to the 2000 US Std Population (19 age groups - Census P25-1103).

^c Survival rates are from the SEER 18 areas (San Francisco, Connecticut, Detroit, Hawaii, Iowa, New Mexico, Seattle, Utah, Atlanta, San Jose-Monterey, Los Angeles, Alaska Native Registry, Rural Georgia, California excluding SF/SJM/LA, Kentucky, Louisiana, New Jersey and Georgia excluding ATL/RG).

Figure 1.11

5-Year Relative Survival (%) SEER Program, 2008-2014 Both Sexes, by Race and Cancer Site



Source: SEER 18 areas (San Francisco, Connecticut, Detroit, Hawaii, Iowa, New Mexico, Seattle, Utah, Atlanta, San Jose-Monterey, Los Angeles, Alaska Native Registry, Rural Georgia, California excluding SF/SJM/LA, Kentucky, Louisiana, New Jersey and Georgia excluding ATL/RG).

^a Ovary excludes borderline cases or histologies 8442, 8451, 8462, 8472, and 8473.

Table 2.8
All Cancer Sites (Invasive)

5-Year Relative and Period Survival (Percent) by Race, Sex, Diagnosis Year and Age

	All Races			Whites			Blacks		
	Total	Males	Females	Total	Males	Females	Total	Males	Females
5-Year Relative Survival (Percent)									
Year of Diagnosis:									
1960-1963 ^a	-	-	-	39	-	-	27	-	-
1970-1973 ^a	-	-	-	43	-	-	31	-	-
1975-1977 ^b	48.9	41.7	55.9	49.8	42.7	56.5	39.1	32.7	46.2
1978-1980 ^b	49.0	43.1	55.0	50.0	44.3	55.6	39.0	33.3	45.6
1981-1983 ^b	50.2	45.2	55.1	51.3	46.6	56.0	38.8	34.2	44.4
1984-1986 ^b	52.4	47.2	57.6	53.6	48.6	58.6	40.2	35.5	45.5
1987-1989 ^b	55.3	51.1	59.6	56.7	52.8	60.6	43.0	38.9	47.7
1990-1992 ^b	59.9	59.1	60.9	61.4	60.8	62.1	47.9	47.7	48.2
1993-1995 ^b	61.3	60.9	61.8	62.4	62.1	62.8	52.9	54.6	50.6
1996-1998 ^b	63.3	63.0	63.7	64.4	64.1	64.7	55.3	58.0	52.2
1999-2001 ^b	66.0	66.3	65.7	67.2	67.6	66.8	58.1	61.2	54.4
2002-2004 ^b	67.1	67.7	66.5	68.4	69.0	67.7	59.6	63.4	55.4
2005-2007 ^b	68.6	69.3	67.8	69.7	70.4	69.0	61.4	64.9	57.6
2008-2014 ^b	69.2 ^e	68.9 ^e	69.5 ^e	70.1 ^e	69.8 ^e	70.5 ^e	63.3 ^e	65.7 ^e	60.7 ^e
5-Year Period Survival (Percent) ^{cd}									
2014	66.8	65.7	67.9	67.1	65.7	68.5	61.5	63.0	59.7
5-Year Relative Survival (Percent), 2008-2014 ^c									
Age at Diagnosis:									
Ages <45	82.7	78.3	85.4	84.0	79.9	86.6	72.9	67.9	75.9
Ages 45-54	74.3	68.9	78.6	75.3	69.5	79.9	66.5	65.4	67.4
Ages 55-64	70.1	69.1	71.3	70.9	69.7	72.5	63.4	65.2	60.5
Ages 65-74	66.9	68.9	64.1	67.3	68.9	65.0	61.7	66.3	55.1
Ages 75+	50.5	53.0	48.1	51.0	53.0	49.2	43.1	48.4	38.9
Ages <65	73.9	70.5	77.1	74.8	71.2	78.2	66.0	65.6	66.4
Ages 65+	59.3	62.3	55.9	59.7	62.1	56.8	54.5	60.5	47.7

- ^a Based on End Results data from a series of hospital registries and one population-based registry.
- ^b SEER 9 areas (San Francisco, Connecticut, Detroit, Hawaii, Iowa, New Mexico, Seattle, Utah, Atlanta). Based on follow-up of patients into 2015. [Expected survival rates](#) are derived from the U.S. Annual Life Tables.
- ^c SEER 18 areas (San Francisco, Connecticut, Detroit, Hawaii, Iowa, New Mexico, Seattle, Utah, Atlanta, San Jose-Monterey, Los Angeles, Alaska Native Registry, Rural Georgia, California excluding SF/SJM/LA, Kentucky, Louisiana, New Jersey and Georgia excluding ATL/RG). Expected survival rates are derived from life tables by socio-economic status, geography and race developed by the SEER program.
- ^d Based on follow-up of patients into 2015. Period survival provides a 2014 estimate of survival by piecing together the most recent conditional survival estimates from several cohorts. It is computed here using three year calendar blocks (2010-2012: 0-1 year survival), (2009-2011: 1-2 year survival), (2008-2010: 2-3 year survival), (2007-2009: 3-4 year survival), (2006-2008: 4-5 years survival). The difference between 1975-1977 and 2008-2014 is statistically significant ($p < .05$).
- ^e The standard error is between 5 and 10 percentage points.
- ^f The standard error is greater than 10 percentage points.
- ^g -
- Statistic could not be calculated due to fewer than 25 cases during the time period.

Table 3.8
Cancer of the Brain and Other Nervous System (Invasive)

5-Year Relative and Period Survival (Percent) by Race, Sex, Diagnosis Year, Stage and Age

	All Races			Whites			Blacks		
	Total	Males	Females	Total	Males	Females	Total	Males	Females
5-Year Relative Survival (Percent)									
Year of Diagnosis:									
1960-1963 ^a	-	-	-	18	16	21	19	17	21
1970-1973 ^a	-	-	-	20	18	22	19	19	19
1975-1977 ^b	22.5	20.7	24.8	21.9	20.2	24.1	25.4	19.6	34.7 ^g
1978-1980 ^b	23.6	22.4	25.1	23.0	22.0	24.4	28.2	28.7	27.5
1981-1983 ^b	24.1	23.0	25.5	23.4	22.4	24.6	30.8	31.7	29.2 ^g
1984-1986 ^b	26.9	25.6	28.5	26.2	24.8	27.8	30.9	32.8	28.5
1987-1989 ^b	29.0	27.4	31.0	28.3	26.3	30.8	31.9	34.0	29.3
1990-1992 ^b	30.2	30.5	29.7	29.2	29.4	28.9	39.3	40.2	38.1
1993-1995 ^b	32.2	33.0	31.3	30.9	31.4	30.2	41.7	46.1	36.8
1996-1998 ^b	31.3	30.6	32.1	30.5	30.1	31.0	35.9	33.6	38.3
1999-2001 ^b	33.9	30.9	37.8	33.1	30.4	36.6	38.6	33.4	45.6
2002-2004 ^b	35.1	34.2	36.1	34.2	33.9	34.5	39.4	33.3	45.8
2005-2007 ^b	35.3	34.3	36.7	33.7	33.3	34.3	43.0	38.9	46.8
2008-2014 ^b	34.5 ^f	33.3 ^f	35.9 ^f	33.2 ^f	31.8 ^f	34.9 ^f	40.7 ^f	41.1 ^f	40.2
5-Year Period Survival (Percent) ^{cd}									
2014	32.9	31.8	34.3	31.6	30.4	33.2	40.4	39.8	41.1
Stage Distribution (%) 2008-2014 ^{ce}									
All Stages									
Number of cases	34,582	19,336	15,246	29,567	16,635	12,932	2,509	1,330	1,179
Percent	100%	100%	100%	100%	100%	100%	100%	100%	100%
Localized	77	78	76	78	78	77	76	78	75
Regional	15	15	15	15	15	15	15	14	16
Distant	2	2	2	2	2	2	3	3	4
Unstaged	5	4	6	5	4	6	5	5	5
5-Year Relative Survival (Percent), 2008-2014 ^c									
Age at Diagnosis:									
Ages <45	68.9	66.4	72.1	69.6	67.0	73.1	65.2	63.4	67.1
Ages 45-54	32.2	29.5	36.1	32.0	29.0	36.3	29.9	27.0	33.6
Ages 55-64	16.2	14.6	18.6	15.6	14.0	18.0	19.1	15.7	22.9
Ages 65-74	8.9	7.9	10.2	8.9	7.6	10.5	7.3	8.8	5.1
Ages 75+	4.5	4.5	4.4	4.0	4.2	3.7	8.4	9.8	8.6
Ages <65	45.1	42.2	49.0	44.2	41.2	48.4	47.5	44.6	50.8
Ages 65+	6.9	6.5	7.3	6.6	6.2	7.1	7.6	8.3	6.5
Stage ^e :									
All Stages	33.2	32.0	34.7	32.0	30.7	33.6	39.5	38.1	40.9
Localized	36.2	34.8	37.9	34.9	33.5	36.8	41.6	40.9	42.2
Regional	20.4	19.7	21.2	19.5	18.9	20.3	27.1	22.7	31.5
Distant	32.7	29.0	37.7	31.2	27.6	36.3	38.6 ^g	38.0 ^h	39.1 ^g
Unstaged	27.3	26.9	27.7	24.9	24.2	25.6	44.0	37.6 ^g	50.7 ^g

^a Based on End Results data from a series of hospital registries and one population-based registry.

^b SEER 9 areas (San Francisco, Connecticut, Detroit, Hawaii, Iowa, New Mexico, Seattle, Utah, Atlanta).

Based on follow-up of patients into 2015. [Expected survival rates](#) are derived from the U.S. Annual Life Tables.

^c SEER 18 areas (San Francisco, Connecticut, Detroit, Hawaii, Iowa, New Mexico, Seattle, Utah, Atlanta, San Jose-Monterey, Los Angeles, Alaska Native Registry, Rural Georgia, California excluding SF/SJM/LA, Kentucky, Louisiana, New Jersey and Georgia excluding ATL/RG). Expected survival rates are derived from life tables by socio-economic status, geography and race developed by the SEER program.

Based on follow-up of patients into 2015.

^d Period survival provides a 2014 estimate of survival by piecing together the most recent conditional survival estimates from several cohorts. It is computed here using three year calendar blocks (2010-2012: 0-1 year survival), (2009-2011: 1-2 year survival), (2008-2010: 2-3 year survival), (2007-2009: 3-4 year survival), (2006-2008: 4-5 years survival).

^e Stage at diagnosis is classified using SEER Summary Stage 2000. Stage distribution percentages may not sum to 100 due to rounding.

^f The difference between 1975-1977 and 2008-2014 is statistically significant ($p < .05$).

^g The standard error is between 5 and 10 percentage points.

^h The standard error is greater than 10 percentage points.

- Statistic could not be calculated due to fewer than 25 cases during the time period.

Table 4.13
Cancer of the Female Breast (Invasive)

5-Year Relative and Period Survival (Percent) by Race, Diagnosis Year, Stage and Age

	All Races, Females			White Females			Black Females		
	All	<50	50+	All	<50	50+	All	<50	50+
5-Year Relative Survival (Percent)									
Year of Diagnosis:									
1960-1963 ^a	-	-	-	63	-	-	46	-	-
1970-1973 ^a	-	-	-	68	-	-	51	-	-
1975-1977 ^b	74.8	76.5	74.3	75.6	77.8	74.9	62.2	62.4	62.0
1978-1980 ^b	74.4	75.5	74.1	75.1	76.1	74.9	63.4	67.0	61.5
1981-1983 ^b	76.1	77.4	75.7	77.1	78.5	76.7	63.4	65.1	62.6
1984-1986 ^b	78.9	77.8	79.3	80.0	79.5	80.2	65.1	63.9	65.9
1987-1989 ^b	84.0	81.4	85.0	85.1	82.7	85.9	71.1	69.7	72.0
1990-1992 ^b	85.2	83.4	85.9	86.5	85.1	87.0	71.5	70.1	72.3
1993-1995 ^b	86.4	84.3	87.1	87.7	86.2	88.1	72.8	70.4	74.1
1996-1998 ^b	88.2	86.6	88.8	89.4	88.3	89.7	76.3	74.0	77.6
1999-2001 ^b	89.7	88.1	90.3	90.8	89.9	91.1	78.9	76.9	80.1
2002-2004 ^b	90.0	89.3	90.2	91.4	91.1	91.5	77.9	77.6	78.2
2005-2007 ^b	90.8	91.3	90.7	92.3	92.7	92.1	79.5	81.5	78.5
2008-2014 ^b	91.1 ^f	91.0 ^f	91.1 ^f	92.1 ^f	92.2 ^f	92.1 ^f	83.1 ^f	83.5 ^f	82.9 ^f
5-Year Period Survival (Percent) ^{cd}									
2014	89.7	89.4	89.9	90.7	90.6	90.7	81.4	80.9	81.6
Stage Distribution (%) 2008-2014 ^{ce}									
All Stages									
Number of cases	343,965	79,183	264,782	271,628	58,195	213,433	38,617	10,653	27,964
Percent	100%	100%	100%	100%	100%	100%	100%	100%	100%
Localized	62	54	64	63	55	65	54	47	57
Regional	31	39	28	30	39	27	36	43	33
Distant	6	5	6	6	5	6	9	8	9
Unstaged	2	1	2	1	1	2	2	2	2
5-Year Relative Survival (Percent), 2008-2014 ^c									
Age at Diagnosis:									
Ages <45	88.2	-	-	89.5	-	-	79.1	-	-
Ages 45-54	90.5	-	-	91.6	-	-	82.1	-	-
Ages 55-64	90.3	-	-	91.3	-	-	82.2	-	-
Ages 65-74	91.7	-	-	92.4	-	-	84.6	-	-
Ages 75+	86.0	-	-	87.0	-	-	74.5	-	-
Ages <65	89.9	-	-	91.1	-	-	81.4	-	-
Ages 65+	89.3	-	-	90.0	-	-	80.6	-	-
Stage ^e :									
All Stages	89.7	89.6	89.7	90.6	90.7	90.6	81.2	80.9	81.3
Localized	98.7	97.0	99.2	99.1	97.4	99.6	95.4	94.0	95.9
Regional	85.3	86.8	84.6	86.4	88.1	85.8	76.6	77.6	76.0
Distant	27.0	37.3	24.1	28.1	40.3	25.2	19.7	27.0	17.0
Unstaged	54.5	75.8	49.6	52.1	75.8	47.6	49.8	67.1	43.5
In Situ ^j	100.0	100.0	100.0	100.0	100.0	100.0	100.0	99.9	100.0

^a Based on End Results data from a series of hospital registries and one population-based registry.

^b SEER 9 areas (San Francisco, Connecticut, Detroit, Hawaii, Iowa, New Mexico, Seattle, Utah, Atlanta).

Based on follow-up of patients into 2015. [Expected survival rates](#) are derived from the U.S. Annual Life Tables.

^c SEER 18 areas (San Francisco, Connecticut, Detroit, Hawaii, Iowa, New Mexico, Seattle, Utah, Atlanta, San Jose-Monterey, Los Angeles, Alaska Native Registry, Rural Georgia, California excluding SF/SJM/LA, Kentucky, Louisiana, New Jersey and Georgia excluding ATL/RG). Expected survival rates are derived from life tables by socio-economic status, geography and race developed by the SEER program.

Based on follow-up of patients into 2015.

^d Period survival provides a 2014 estimate of survival by piecing together the most recent conditional survival estimates

from several cohorts. It is computed here using three year calendar blocks (2010-2012: 0-1 year survival), (2009-2011: 1-2 year survival), (2008-2010: 2-3 year survival), (2007-2009: 3-4 year survival), (2006-2008: 4-5 years survival).

^e Stage at diagnosis is classified using SEER Summary Stage 2000. Stage distribution percentages may not sum to 100 due to rounding.

^f The difference between 1975-1977 and 2008-2014 is statistically significant ($p < .05$).

^g The standard error is between 5 and 10 percentage points.

^h The standard error is greater than 10 percentage points.

^j In situ cases are not included in the All Stages group.

- Statistic could not be calculated due to fewer than 25 cases during the time period.

Table 5.8
Cancer of the Cervix Uteri (Invasive)

5-Year Relative and Period Survival (Percent) by Race, Diagnosis Year, Stage and Age

	All Races, Females			White Females			Black Females		
	All	<50	50+	All	<50	50+	All	<50	50+
5-Year Relative Survival (Percent)									
Year of Diagnosis:									
1960-1963 ^a	-	-	-	58	-	-	47	-	-
1970-1973 ^a	-	-	-	64	-	-	61	-	-
1975-1977 ^b	69.1	82.5	57.9	69.7	83.9	58.1	64.6	75.6	55.1
1978-1980 ^b	67.4	78.4	57.8	68.1	79.8	58.2	61.0	70.6	52.0
1981-1983 ^b	66.9	79.6	54.6	67.8	80.8	54.9	59.2	73.6	46.2
1984-1986 ^b	67.2	77.8	55.3	68.8	79.4	56.4	57.8	68.0	48.1
1987-1989 ^b	70.1	79.6	58.0	72.5	82.6	58.5	56.9	62.7	51.8
1990-1992 ^b	69.6	79.1	56.8	70.9	81.3	56.4	58.1	63.8	51.0
1993-1995 ^b	72.6	81.8	59.8	74.2	83.5	60.1	62.8	70.7	53.3
1996-1998 ^b	72.6	80.9	60.3	73.7	82.7	59.1	65.0	67.8	61.4
1999-2001 ^b	72.4	83.9	56.4	73.4	85.7	55.1	66.2	74.1	56.9
2002-2004 ^b	69.2	79.2	55.8	70.3	81.3	54.6	64.1	72.0	54.6
2005-2007 ^b	70.4	80.8	56.4	71.9	82.5	56.9	60.4	69.1	50.8
2008-2014 ^b	68.9	79.3 ^f	56.4	71.0	82.3	56.6	57.4 ^f	65.0 ^f	49.7
5-Year Period Survival (Percent) ^{cd}									
2014	65.7	75.7	54.5	67.3	77.4	55.4	54.5	64.9	44.7
Stage Distribution (%) 2008-2014 ^{ce}									
All Stages									
Number of cases	21,815	11,583	10,232	16,258	8,894	7,364	3,084	1,466	1,618
Percent	100%	100%	100%	100%	100%	100%	100%	100%	100%
Localized	45	57	31	47	59	33	36	45	27
Regional	36	30	43	35	29	42	41	38	44
Distant	15	9	21	14	9	21	18	12	23
Unstaged	4	3	5	4	3	5	5	5	6
5-Year Relative Survival (Percent), 2008-2014 ^c									
Age at Diagnosis:									
Ages <45	78.6	-	-	80.3	-	-	66.0	-	-
Ages 45-54	65.6	-	-	67.3	-	-	55.4	-	-
Ages 55-64	58.0	-	-	58.2	-	-	50.7	-	-
Ages 65-74	53.2	-	-	52.3	-	-	50.6	-	-
Ages 75+	35.5	-	-	35.7	-	-	31.0	-	-
Ages <65	70.4	-	-	72.0	-	-	59.0	-	-
Ages 65+	46.1	-	-	45.8	-	-	42.0	-	-
Stage ^e :									
All Stages	66.2	76.3	54.6	67.7	78.1	55.1	55.5	64.5	47.2
Localized	91.7	93.8	87.3	92.2	94.3	87.4	86.7	89.1	82.7
Regional	56.0	60.9	51.9	56.8	62.7	51.7	49.1	52.1	46.6
Distant	17.2	19.9	15.8	18.8	23.0	16.6	10.8	10.7	11.2
Unstaged	50.0	72.0	33.1	50.5	72.2	32.9	42.2	63.6 ^g	27.2 ^g

^a Based on End Results data from a series of hospital registries and one population-based registry.

^b SEER 9 areas (San Francisco, Connecticut, Detroit, Hawaii, Iowa, New Mexico, Seattle, Utah, Atlanta).

Based on follow-up of patients into 2015. [Expected survival rates](#) are derived from the U.S. Annual Life Tables.

^c SEER 18 areas (San Francisco, Connecticut, Detroit, Hawaii, Iowa, New Mexico, Seattle, Utah, Atlanta, San Jose-Monterey, Los Angeles, Alaska Native Registry, Rural Georgia, California excluding SF/SJM/LA, Kentucky, Louisiana, New Jersey and Georgia excluding ATL/RG). Expected survival rates are derived from life tables by socio-economic status, geography and race developed by the SEER program.

Based on follow-up of patients into 2015.

^d Period survival provides a 2014 estimate of survival by piecing together the most recent conditional survival estimates from several cohorts. It is computed here using three year calendar blocks (2010-2012: 0-1 year survival), (2009-2011: 1-2 year survival), (2008-2010: 2-3 year survival), (2007-2009: 3-4 year survival), (2006-2008: 4-5 years survival).

^e Stage at diagnosis is classified using SEER Summary Stage 2000. Stage distribution percentages may not sum to 100 due to rounding.

^f The difference between 1975-1977 and 2008-2014 is statistically significant (p<.05).

^g The standard error is between 5 and 10 percentage points.

^h The standard error is greater than 10 percentage points.

- Statistic could not be calculated due to fewer than 25 cases during the time period.

Table 6.12
Cancer of the Colon and Rectum (Invasive)

5-Year Relative and Period Survival (Percent) by Race, Sex, Diagnosis Year, Stage and Age

	All Races			Whites			Blacks		
	Total	Males	Females	Total	Males	Females	Total	Males	Females
5-Year Relative Survival (Percent)									
Year of Diagnosis:									
1960-1963 ^a	-	-	-	-	-	-	-	-	-
1970-1973 ^a	-	-	-	-	-	-	-	-	-
1975-1977 ^b	49.8	49.0	50.6	50.1	49.4	50.8	44.7	43.4	45.9
1978-1980 ^b	51.2	50.2	52.2	51.6	50.6	52.5	45.4	43.4	46.9
1981-1983 ^b	54.0	53.8	54.2	54.4	54.4	54.3	46.5	42.9	49.5
1984-1986 ^b	57.7	57.7	57.6	58.4	58.5	58.3	48.4	47.5	49.0
1987-1989 ^b	59.6	59.8	59.3	60.1	60.6	59.5	52.3	49.9	54.5
1990-1992 ^b	61.2	61.0	61.3	61.9	61.7	62.1	52.9	54.4	51.5
1993-1995 ^b	59.9	59.8	60.0	60.5	60.3	60.6	51.8	51.3	52.1
1996-1998 ^b	62.4	62.4	62.5	63.0	62.8	63.2	54.0	55.2	53.0
1999-2001 ^b	65.1	66.1	64.1	66.6	67.4	65.7	54.2	55.7	53.0
2002-2004 ^b	65.8	65.8	65.9	66.8	67.1	66.4	56.6	55.5	57.5
2005-2007 ^b	66.4	66.4	66.4	67.3	67.7	66.9	58.9	55.8	61.5
2008-2014 ^b	66.2 ^f	66.1 ^f	66.4 ^f	67.0 ^f	67.0 ^f	67.0 ^f	58.3 ^f	57.1 ^f	59.4 ^f
5-Year Period Survival (Percent) ^{cd}									
2014	64.2	63.5	64.8	64.6	64.0	65.2	57.9	55.7	60.0
Stage Distribution (%) 2008-2014 ^{ce}									
All Stages									
Number of cases	207,848	107,821	100,027	160,564	83,895	76,669	25,697	12,518	13,179
Percent	100%	100%	100%	100%	100%	100%	100%	100%	100%
Localized	39	39	39	39	39	39	38	37	38
Regional	35	35	35	36	36	36	32	32	32
Distant	21	22	21	21	21	21	26	27	25
Unstaged	4	4	5	4	4	5	5	4	5
5-Year Relative Survival (Percent), 2008-2014 ^c									
Age at Diagnosis:									
Ages <45	68.7	66.4	71.2	69.9	67.6	72.4	61.8	57.6	65.4
Ages 45-54	70.9	69.2	73.0	71.6	69.9	73.7	63.8	60.4	67.5
Ages 55-64	67.3	66.2	68.8	68.1	67.0	69.6	60.2	58.4	62.4
Ages 65-74	67.1	66.0	68.4	67.5	66.7	68.5	59.3	55.2	63.3
Ages 75+	55.5	55.1	55.7	56.7	56.1	57.2	44.7	42.4	45.9
Ages <65	68.8	67.3	70.7	69.6	68.1	71.5	61.8	59.0	64.8
Ages 65+	60.7	60.8	60.6	61.4	61.4	61.3	52.6	50.3	54.3
Stage ^e :									
All Stages	64.5	64.1	64.9	65.0	64.7	65.4	57.8	55.7	59.8
Localized	89.8	89.1	90.6	90.0	89.2	90.9	86.4	84.8	87.9
Regional	71.1	70.9	71.3	71.8	71.8	71.7	65.2	62.6	67.6
Distant	13.8	12.8	14.9	14.3	13.4	15.4	10.4	9.5	11.3
Unstaged	35.0	38.4	31.9	31.8	35.1	28.8	37.7	38.9	36.6

^a Based on End Results data from a series of hospital registries and one population-based registry.

^b SEER 9 areas (San Francisco, Connecticut, Detroit, Hawaii, Iowa, New Mexico, Seattle, Utah, Atlanta).

Based on follow-up of patients into 2015. [Expected survival rates](#) are derived from the U.S. Annual Life Tables.

^c SEER 18 areas (San Francisco, Connecticut, Detroit, Hawaii, Iowa, New Mexico, Seattle, Utah, Atlanta, San Jose-Monterey, Los Angeles, Alaska Native Registry, Rural Georgia, California excluding SF/SJM/LA, Kentucky, Louisiana, New Jersey and Georgia excluding ATL/RG). Expected survival rates are derived from life tables by socio-economic status, geography and race developed by the SEER program.

Based on follow-up of patients into 2015.

^d Period survival provides a 2014 estimate of survival by piecing together the most recent conditional survival estimates from several cohorts. It is computed here using three year calendar blocks (2010-2012: 0-1 year survival), (2009-2011: 1-2 year survival), (2008-2010: 2-3 year survival), (2007-2009: 3-4 year survival), (2006-2008: 4-5 years survival).

^e Stage at diagnosis is classified using SEER Summary Stage 2000. Stage distribution percentages may not sum to 100 due to rounding.

^f The difference between 1975-1977 and 2008-2014 is statistically significant ($p < .05$).

^g The standard error is between 5 and 10 percentage points.

^h The standard error is greater than 10 percentage points.

- Statistic could not be calculated due to fewer than 25 cases during the time period.

Table 6.13
Cancer of the Colon (Invasive)

5-Year Relative and Period Survival (Percent) by Race, Sex, Diagnosis Year, Stage and Age

	All Races			Whites			Blacks		
	Total	Males	Females	Total	Males	Females	Total	Males	Females
5-Year Relative Survival (Percent)									
Year of Diagnosis:									
1960-1963 ^a	-	-	-	43	42	44	34	32	35
1970-1973 ^a	-	-	-	49	47	50	37	36	38
1975-1977 ^b	50.6	50.1	51.1	50.9	50.5	51.3	44.8	44.1	45.3
1978-1980 ^b	52.3	51.3	53.2	52.5	51.3	53.4	48.9	47.5	49.8
1981-1983 ^b	55.2	55.6	54.8	55.4	56.2	54.8	48.5	44.7	51.5
1984-1986 ^b	58.3	58.8	57.8	59.0	59.6	58.5	49.2	49.0	49.3
1987-1989 ^b	60.2	60.8	59.7	60.7	61.4	59.9	52.4	50.7	53.8
1990-1992 ^b	62.0	62.3	61.7	62.8	63.1	62.4	53.4	54.6	52.4
1993-1995 ^b	59.8	60.2	59.5	60.5	60.7	60.3	51.2	51.2	51.0
1996-1998 ^b	62.1	62.4	61.9	62.9	62.9	62.8	53.7	55.9	51.9
1999-2001 ^b	64.9	66.2	63.7	66.6	67.9	65.5	52.6	54.0	51.6
2002-2004 ^b	64.8	64.7	64.9	65.7	65.8	65.7	55.6	55.0	56.0
2005-2007 ^b	65.8	66.0	65.6	67.1	67.7	66.5	57.1	54.6	59.0
2008-2014 ^b	65.1 ^f	65.4 ^f	64.8 ^f	66.3 ^f	66.6 ^f	66.1 ^f	55.3 ^f	55.8 ^f	54.8 ^f
5-Year Period Survival (Percent) ^{cd}									
2014	63.0	62.8	63.2	63.8	63.6	64.1	56.0	55.1	56.8
Stage Distribution (%) 2008-2014 ^{ce}									
All Stages									
Number of cases	144,128	71,272	72,856	111,670	55,630	56,040	18,725	8,782	9,943
Percent	100%	100%	100%	100%	100%	100%	100%	100%	100%
Localized	38	38	37	38	39	38	35	35	35
Regional	36	35	36	36	36	36	34	33	34
Distant	23	23	22	22	22	22	27	28	27
Unstaged	4	4	4	4	3	4	4	4	4
5-Year Relative Survival (Percent), 2008-2014 ^c									
Age at Diagnosis:									
Ages <45	67.5	65.2	69.7	69.4	67.2	71.7	59.2	55.5	62.1
Ages 45-54	68.3	67.6	69.2	69.6	68.8	70.6	60.2	58.5	61.9
Ages 55-64	66.1	65.8	66.4	67.2	66.7	67.7	58.2	58.0	58.3
Ages 65-74	67.1	66.3	68.1	67.8	67.0	68.6	59.2	56.0	62.1
Ages 75+	56.7	56.3	56.9	58.2	57.6	58.6	45.5	43.5	46.5
Ages <65	67.0	66.3	67.9	68.3	67.5	69.3	59.0	57.9	60.1
Ages 65+	61.1	61.2	61.0	62.1	62.1	62.0	52.7	51.0	53.9
Stage ^e :									
All Stages	63.6	63.6	63.6	64.5	64.4	64.5	56.0	55.0	56.9
Localized	90.4	89.8	91.1	90.8	89.9	91.7	86.3	85.5	87.0
Regional	71.4	71.5	71.2	72.0	72.4	71.7	66.3	64.8	67.6
Distant	13.5	12.7	14.3	14.1	13.3	14.8	9.9	9.3	10.5
Unstaged	26.2	31.3	22.1	24.4	29.2	20.5	28.0	32.2	24.2

^a Based on End Results data from a series of hospital registries and one population-based registry.

^b SEER 9 areas (San Francisco, Connecticut, Detroit, Hawaii, Iowa, New Mexico, Seattle, Utah, Atlanta).

Based on follow-up of patients into 2015. [Expected survival rates](#) are derived from the U.S. Annual Life Tables.

^c SEER 18 areas (San Francisco, Connecticut, Detroit, Hawaii, Iowa, New Mexico, Seattle, Utah, Atlanta, San Jose-Monterey, Los Angeles, Alaska Native Registry, Rural Georgia, California excluding SF/SJM/LA, Kentucky, Louisiana, New Jersey and Georgia excluding ATL/RG). Expected survival rates are derived from life tables by socio-economic status, geography and race developed by the SEER program.

Based on follow-up of patients into 2015.

^d Period survival provides a 2014 estimate of survival by piecing together the most recent conditional survival estimates from several cohorts. It is computed here using three year calendar blocks (2010-2012: 0-1 year survival), (2009-2011: 1-2 year survival), (2008-2010: 2-3 year survival), (2007-2009: 3-4 year survival), (2006-2008: 4-5 years survival).

^e Stage at diagnosis is classified using SEER Summary Stage 2000. Stage distribution percentages may not sum to 100 due to rounding.

^f The difference between 1975-1977 and 2008-2014 is statistically significant (p<.05).

^g The standard error is between 5 and 10 percentage points.

^h The standard error is greater than 10 percentage points.

- Statistic could not be calculated due to fewer than 25 cases during the time period.

Table 6.14
Cancer of the Rectum (Invasive)

5-Year Relative and Period Survival (Percent) by Race, Sex, Diagnosis Year, Stage and Age

	All Races			Whites			Blacks		
	Total	Males	Females	Total	Males	Females	Total	Males	Females
5-Year Relative Survival (Percent)									
Year of Diagnosis:									
1960-1963 ^a	-	-	-	38	36	41	27	28	27
1970-1973 ^a	-	-	-	45	43	48	30	20	40
1975-1977 ^b	48.1	47.0	49.5	48.3	47.4	49.4	44.4	41.4	46.8
1978-1980 ^b	48.9	48.4	49.5	49.7	49.3	50.2	34.8	33.5	35.8
1981-1983 ^b	51.4	50.2	52.8	52.0	51.0	53.2	40.3	38.1	42.5
1984-1986 ^b	56.3	55.6	57.1	57.0	56.4	57.7	45.9	43.4	48.2
1987-1989 ^b	58.1	57.9	58.4	58.7	58.9	58.4	52.3	47.7	56.9
1990-1992 ^b	59.2	58.4	60.2	59.9	59.0	61.1	51.2	53.7	48.5
1993-1995 ^b	60.1	59.0	61.5	60.6	59.5	61.9	53.8	51.4	56.4
1996-1998 ^b	63.2	62.4	64.3	63.5	62.9	64.4	55.0	53.6	56.2
1999-2001 ^b	65.9	66.1	65.5	66.5	66.5	66.4	59.3	60.3	58.1
2002-2004 ^b	68.4	68.1	68.7	69.4	70.0	68.6	59.8	56.8	62.6
2005-2007 ^b	67.9	67.3	68.7	68.1	67.9	68.3	64.0	58.9	68.6
2008-2014 ^b	68.8 ^f	67.5 ^f	70.6 ^f	68.6 ^f	67.9 ^f	69.7 ^f	65.9 ^f	59.8 ^f	73.0 ^f
5-Year Period Survival (Percent) ^{cd}									
2014	66.7	64.9	69.0	66.3	64.9	68.2	63.1	57.3	69.8
Stage Distribution (%) 2008-2014 ^{ce}									
All Stages									
Number of cases	63,720	36,549	27,171	48,894	28,265	20,629	6,972	3,736	3,236
Percent	100%	100%	100%	100%	100%	100%	100%	100%	100%
Localized	42	41	44	41	40	42	46	43	50
Regional	34	35	33	35	36	34	27	29	25
Distant	19	19	18	19	19	18	20	23	18
Unstaged	5	5	6	5	4	5	7	6	7
5-Year Relative Survival (Percent), 2008-2014 ^c									
Age at Diagnosis:									
Ages <45	70.6	67.9	73.7	70.6	68.2	73.5	66.9	60.9	73.1
Ages 45-54	74.6	71.4	79.0	74.4	71.5	78.5	70.6	63.7	79.1
Ages 55-64	69.5	66.9	74.0	69.7	67.4	73.5	65.2	59.0	73.9
Ages 65-74	66.9	65.4	69.1	66.7	65.8	68.1	59.8	52.5	68.0
Ages 75+	50.9	51.1	50.6	51.1	51.1	51.1	41.2	37.8	42.8
Ages <65	71.6	68.7	76.0	71.6	69.0	75.5	67.6	61.1	76.0
Ages 65+	59.5	59.6	59.3	59.3	59.7	58.8	52.1	47.7	55.8
Stage ^e :									
All Stages	66.6	65.2	68.6	66.3	65.3	67.8	62.6	57.3	68.7
Localized	88.7	87.9	89.6	88.3	87.7	89.0	86.7	83.5	89.5
Regional	70.4	69.8	71.3	71.1	70.7	71.7	61.3	56.3	67.3
Distant	14.7	13.1	17.0	15.0	13.6	17.1	12.3	10.2	15.4
Unstaged	49.6	48.4	51.0	45.1	43.9	46.4	52.9	48.6	56.4

^a Based on End Results data from a series of hospital registries and one population-based registry.

^b SEER 9 areas (San Francisco, Connecticut, Detroit, Hawaii, Iowa, New Mexico, Seattle, Utah, Atlanta).

Based on follow-up of patients into 2015. [Expected survival rates](#) are derived from the U.S. Annual Life Tables.

^c SEER 18 areas (San Francisco, Connecticut, Detroit, Hawaii, Iowa, New Mexico, Seattle, Utah, Atlanta, San Jose-Monterey, Los Angeles, Alaska Native Registry, Rural Georgia, California excluding SF/SJM/LA, Kentucky, Louisiana, New Jersey and Georgia excluding ATL/RG). Expected survival rates are derived from life tables by socio-economic status, geography and race developed by the SEER program.

Based on follow-up of patients into 2015.

^d Period survival provides a 2014 estimate of survival by piecing together the most recent conditional survival estimates from several cohorts. It is computed here using three year calendar blocks (2010-2012: 0-1 year survival), (2009-2011: 1-2 year survival), (2008-2010: 2-3 year survival), (2007-2009: 3-4 year survival), (2006-2008: 4-5 years survival).

^e Stage at diagnosis is classified using SEER Summary Stage 2000. Stage distribution percentages may not sum to 100 due to rounding.

^f The difference between 1975-1977 and 2008-2014 is statistically significant (p<.05).

^g The standard error is between 5 and 10 percentage points.

^h The standard error is greater than 10 percentage points.

- Statistic could not be calculated due to fewer than 25 cases during the time period.

Table 7.8
Cancer of the Corpus and Uterus, NOS (Invasive)

5-Year Relative and Period Survival (Percent) by Race, Diagnosis Year, Stage and Age

	All Races, Females			White Females			Black Females		
	All	<50	50+	All	<50	50+	All	<50	50+
5-Year Relative Survival (Percent)									
Year of Diagnosis:									
1960-1963 ^a	-	-	-	73	-	-	31	-	-
1970-1973 ^a	-	-	-	81	-	-	44	-	-
1975-1977 ^b	86.9	92.7	86.2	88.0	93.3	87.4	60.2	84.4 ^g	55.6
1978-1980 ^b	82.5	91.7	81.3	83.7	93.0	82.6	54.9	82.3 ^g	49.5
1981-1983 ^b	80.7	91.2	79.4	82.2	92.3	81.1	50.7	82.8 ^g	45.6
1984-1986 ^b	82.5	93.6	81.1	84.0	93.9	82.9	56.2	83.5 ^g	52.7
1987-1989 ^b	82.3	89.8	81.2	83.9	90.9	83.0	56.7	82.8 ^g	52.9
1990-1992 ^b	83.7	90.1	82.7	85.8	92.3	84.8	54.0	72.9 ^g	50.2
1993-1995 ^b	83.2	90.0	82.0	84.9	91.5	83.8	58.6	81.7	54.0
1996-1998 ^b	83.5	90.1	82.4	85.2	91.3	84.2	61.6	82.2	57.2
1999-2001 ^b	84.2	88.8	83.3	85.9	89.9	85.2	61.4	70.9	58.9
2002-2004 ^b	83.0	90.1	81.5	85.2	92.5	84.0	60.4	78.0	55.8
2005-2007 ^b	83.9	88.5	83.1	85.9	90.1	85.3	65.3	75.3	63.1
2008-2014 ^b	82.7 ^f	88.5 ^f	81.7 ^f	85.2 ^f	89.8 ^f	84.6 ^f	63.4	79.4	60.9 ^f
5-Year Period Survival (Percent) ^{cd}									
2014	81.0	87.7	79.9	83.2	88.7	82.4	61.8	77.5	59.4
Stage Distribution (%) 2008-2014 ^{ce}									
All Stages									
Number of cases	76,850	10,789	66,061	61,281	7,984	53,297	8,010	1,029	6,981
Percent	100%	100%	100%	100%	100%	100%	100%	100%	100%
Localized	67	71	66	69	72	68	54	62	53
Regional	21	17	22	20	17	21	25	19	26
Distant	9	8	9	8	7	8	16	14	16
Unstaged	3	4	3	3	4	3	5	5	5
5-Year Relative Survival (Percent), 2008-2014 ^c									
Age at Diagnosis:									
Ages <45	89.3	-	-	90.3	-	-	79.0	-	-
Ages 45-54	86.7	-	-	88.4	-	-	69.9	-	-
Ages 55-64	83.9	-	-	86.4	-	-	65.0	-	-
Ages 65-74	78.0	-	-	81.1	-	-	57.1	-	-
Ages 75+	66.8	-	-	70.1	-	-	40.8	-	-
Ages <65	85.4	-	-	87.4	-	-	68.1	-	-
Ages 65+	74.0	-	-	77.1	-	-	52.1	-	-
Stage ^e :									
All Stages	81.1	88.1	79.9	83.4	89.3	82.5	61.6	77.6	59.1
Localized	94.9	96.4	94.6	95.9	96.9	95.7	85.3	91.4	84.1
Regional	68.6	81.0	66.9	71.3	82.1	69.9	48.5	70.9	46.0
Distant	16.3	28.5	14.5	17.4	30.3	15.6	9.2	20.5	7.8
Unstaged	52.0	88.8	44.5	50.7	89.3	43.8	43.3	85.1 ^g	36.5

^a Based on End Results data from a series of hospital registries and one population-based registry.

^b SEER 9 areas (San Francisco, Connecticut, Detroit, Hawaii, Iowa, New Mexico, Seattle, Utah, Atlanta).

Based on follow-up of patients into 2015. [Expected survival rates](#) are derived from the U.S. Annual Life Tables.

^c SEER 18 areas (San Francisco, Connecticut, Detroit, Hawaii, Iowa, New Mexico, Seattle, Utah, Atlanta, San Jose-Monterey, Los Angeles, Alaska Native Registry, Rural Georgia, California excluding SF/SJM/LA, Kentucky, Louisiana, New Jersey and Georgia excluding ATL/RG). Expected survival rates are derived from life tables by socio-economic status, geography and race developed by the SEER program.

Based on follow-up of patients into 2015.

^d Period survival provides a 2014 estimate of survival by piecing together the most recent conditional survival estimates from several cohorts. It is computed here using three year calendar blocks (2010-2012: 0-1 year survival), (2009-2011: 1-2 year survival), (2008-2010: 2-3 year survival), (2007-2009: 3-4 year survival), (2006-2008: 4-5 years survival).

^e Stage at diagnosis is classified using SEER Summary Stage 2000. Stage distribution percentages may not sum to 100 due to rounding.

^f The difference between 1975-1977 and 2008-2014 is statistically significant (p<.05).

^g The standard error is between 5 and 10 percentage points.

^h The standard error is greater than 10 percentage points.

- Statistic could not be calculated due to fewer than 25 cases during the time period.

Table 8.8
Cancer of the Esophagus (Invasive)

5-Year Relative and Period Survival (Percent) by Race, Sex, Diagnosis Year, Stage and Age

	All Races			Whites			Blacks		
	Total	Males	Females	Total	Males	Females	Total	Males	Females
5-Year Relative Survival (Percent)									
Year of Diagnosis:									
1960-1963 ^a	-	-	-	4	4	6	1	0	2
1970-1973 ^a	-	-	-	4	4	4	4	4	3
1975-1977 ^b	5.0	4.0	7.5	5.5	4.8	7.0	3.5	2.0	7.7
1978-1980 ^b	5.0	4.8	5.6	5.3	5.3	5.2	4.3	3.4	6.8
1981-1983 ^b	6.7	6.1	8.2	7.3	6.5	9.0	4.6	4.0	6.5
1984-1986 ^b	9.5	8.4	12.1	10.2	9.0	13.0	8.7	8.2	9.9
1987-1989 ^b	9.4	9.4	9.5	10.5	11.0	9.2	6.6	5.3	10.2
1990-1992 ^b	12.2	11.7	13.4	12.9	12.2	14.8	9.4	9.7	8.4
1993-1995 ^b	12.1	12.2	11.7	13.3	13.6	12.7	7.6	7.8	6.9
1996-1998 ^b	13.4	13.0	14.4	14.2	14.0	14.7	10.2	8.5	13.6
1999-2001 ^b	18.1	17.7	19.5	18.9	18.7	19.7	12.4	10.6	16.2
2002-2004 ^b	18.2	18.0	18.9	19.6	19.6	19.5	10.7	8.0	15.7
2005-2007 ^b	20.3	20.5	19.5	21.3	21.4	21.1	14.6	15.3	13.3
2008-2014 ^b	21.1 ^f	20.7 ^f	22.5 ^f	22.2 ^f	22.1 ^f	22.7 ^f	13.0 ^f	11.0 ^f	16.4 ^f
5-Year Period Survival (Percent) ^{cd}									
2014	20.5	19.9	22.9	21.4	20.8	23.9	13.4	12.0	16.1
Stage Distribution (%) 2008-2014 ^{ce}									
All Stages									
Number of cases	21,316	16,883	4,433	17,911	14,454	3,457	2,213	1,522	691
Percent	100%	100%	100%	100%	100%	100%	100%	100%	100%
Localized	19	18	21	19	19	22	17	16	19
Regional	32	32	31	32	32	31	32	31	33
Distant	39	41	32	39	41	32	41	43	34
Unstaged	10	9	15	10	9	15	11	10	13
5-Year Relative Survival (Percent), 2008-2014 ^c									
Age at Diagnosis:									
Ages <45	19.1	18.7	19.6 ^g	18.3	18.5	18.9 ^g	16.0 ^g	10.8 ^g	20.8 ^h
Ages 45-54	20.2	19.5	23.9	21.6	20.8	26.6	12.0	11.9	12.9
Ages 55-64	21.0	20.3	24.7	22.6	22.0	26.4	12.5	9.9	18.8
Ages 65-74	22.5	21.8	25.6	23.4	22.7	26.7	14.2	13.0	16.6
Ages 75+	12.2	12.4	11.7	12.1	12.5	11.1	11.6	11.0	10.5
Ages <65	20.7	20.0	24.3	22.1	21.4	25.9	12.6	10.6	17.5
Ages 65+	17.8	17.9	17.5	18.2	18.4	17.3	13.2	12.4	14.4
Stage ^e :									
All Stages	19.2	18.9	20.0	19.9	19.9	20.3	12.9	11.4	16.2
Localized	45.2	47.9	36.1	47.5	50.1	37.4	25.8	26.1	25.7
Regional	23.6	23.0	25.9	24.1	23.7	26.2	18.5	17.3	20.9
Distant	4.8	4.3	7.4	5.0	4.6	7.3	3.5	1.9	7.4
Unstaged	12.0	12.0	12.2	11.6	12.0	10.8	10.9	10.3	12.3

^a Based on End Results data from a series of hospital registries and one population-based registry.

^b SEER 9 areas (San Francisco, Connecticut, Detroit, Hawaii, Iowa, New Mexico, Seattle, Utah, Atlanta).

Based on follow-up of patients into 2015. [Expected survival rates](#) are derived from the U.S. Annual Life Tables.

^c SEER 18 areas (San Francisco, Connecticut, Detroit, Hawaii, Iowa, New Mexico, Seattle, Utah, Atlanta, San Jose-Monterey, Los Angeles, Alaska Native Registry, Rural Georgia, California excluding SF/SJM/LA, Kentucky, Louisiana, New Jersey and Georgia excluding ATL/RG). Expected survival rates are derived from life tables by socio-economic status, geography and race developed by the SEER program.

Based on follow-up of patients into 2015.

^d Period survival provides a 2014 estimate of survival by piecing together the most recent conditional survival estimates from several cohorts. It is computed here using three year calendar blocks (2010-2012: 0-1 year survival), (2009-2011: 1-2 year survival), (2008-2010: 2-3 year survival), (2007-2009: 3-4 year survival), (2006-2008: 4-5 years survival).

^e Stage at diagnosis is classified using SEER Summary Stage 2000. Stage distribution percentages may not sum to 100 due to rounding.

^f The difference between 1975-1977 and 2008-2014 is statistically significant (p<.05).

^g The standard error is between 5 and 10 percentage points.

^h The standard error is greater than 10 percentage points.

- Statistic could not be calculated due to fewer than 25 cases during the time period.

Table 9.8
Hodgkin Lymphoma

5-Year Relative and Period Survival (Percent) by Race, Sex, Diagnosis Year and Age

	All Races			Whites			Blacks		
	Total	Males	Females	Total	Males	Females	Total	Males	Females
5-Year Relative Survival (Percent)									
Year of Diagnosis:									
1960-1963 ^a	-	-	-	40	34	48	-	-	-
1970-1973 ^a	-	-	-	67	66	69	-	-	-
1975-1977 ^b	71.8	69.9	74.3	72.1	70.1	74.6	70.1	68.5 ^g	73.3 ^g
1978-1980 ^b	71.7	70.3	73.5	71.8	69.8	74.3	70.6	74.7 ^g	63.1 ^g
1981-1983 ^b	74.3	72.9	76.0	74.6	73.7	75.7	71.8	69.6 ^g	75.9 ^g
1984-1986 ^b	78.3	76.6	80.6	78.8	77.0	81.1	74.9	76.0 ^g	72.1 ^g
1987-1989 ^b	79.2	76.6	82.5	79.7	76.8	83.3	72.3	70.9 ^g	74.0 ^g
1990-1992 ^b	81.8	79.3	84.7	82.9	81.1	85.0	74.3	65.2	84.3
1993-1995 ^b	81.7	79.3	84.6	82.2	80.1	84.7	78.3	74.0	83.0
1996-1998 ^b	85.1	84.4	85.9	85.7	84.4	87.3	81.1	84.2	77.7
1999-2001 ^b	85.1	82.8	87.9	85.7	84.0	87.8	81.6	75.3	89.8
2002-2004 ^b	86.2	85.2	87.2	87.7	86.9	88.5	79.1	74.4	82.7
2005-2007 ^b	88.5	87.4	89.7	89.2	88.6	89.7	85.1	81.9	88.1
2008-2014 ^b	88.4 ^f	87.4 ^f	89.7 ^f	89.1 ^f	88.5 ^f	89.8 ^f	85.5 ^f	80.9 ^f	91.0 ^f
5-Year Period Survival (Percent) ^{cd}									
2014	86.7	85.8	87.8	86.9	86.2	87.7	84.0	81.2	87.5
Stage Distribution (%) 2008-2014 ^{ce}									
All Stages									
Number of cases	14,692	8,041	6,651	11,727	6,428	5,299	1,909	1,039	870
Percent	100%	100%	100%	100%	100%	100%	100%	100%	100%
Localized	15	16	14	15	16	14	17	17	17
Regional	40	35	46	41	36	47	31	26	37
Distant	41	45	36	40	44	35	49	55	43
Unstaged	4	4	4	4	4	4	3	2	3
5-Year Relative Survival (Percent), 2008-2014 ^c									
Age at Diagnosis:									
Ages <45	93.9	93.1	94.8	94.8	94.5	95.1	88.4	84.0	93.4
Ages 45-54	87.1	84.2	91.4	88.2	86.0	91.6	82.7	77.0	91.3
Ages 55-64	79.3	79.2	79.2	79.8	80.2	79.0	69.6	64.8	74.7 ^g
Ages 65-74	67.5	65.7	69.4	67.3	64.4	70.9	65.2 ^g	74.4 ^h	56.2 ^h
Ages 75+	47.0	47.6	45.7	48.0	47.2	47.9	46.3 ^g	-	38.1 ^h
Ages <65	91.1	89.8	92.6	91.8	91.1	92.8	85.5	80.8	91.0
Ages 65+	58.3	58.4	57.8	58.5	57.1	59.7	60.3 ^g	73.5 ^g	50.1 ^g
Stage ^e :									
All Stages	86.6	85.7	87.7	86.9	86.2	87.7	83.9	80.4	87.8
Localized	92.3	92.9	91.3	92.3	92.8	91.3	92.1	92.2	91.8
Regional	93.4	92.4	94.2	93.5	92.4	94.4	92.3	91.4	92.9
Distant	78.2	78.3	78.0	78.4	79.2	77.0	76.1	71.4	83.1
Unstaged	82.6	80.9	84.4	81.8	78.6	85.4	69.6 ^g	73.1 ^h	-

^a Based on End Results data from a series of hospital registries and one population-based registry.^b SEER 9 areas (San Francisco, Connecticut, Detroit, Hawaii, Iowa, New Mexico, Seattle, Utah, Atlanta).Based on follow-up of patients into 2015. [Expected survival rates](#) are derived from the U.S. Annual Life Tables.^c SEER 18 areas (San Francisco, Connecticut, Detroit, Hawaii, Iowa, New Mexico, Seattle, Utah, Atlanta, San Jose-Monterey, Los Angeles, Alaska Native Registry, Rural Georgia, California excluding SF/SJM/LA, Kentucky, Louisiana, New Jersey and Georgia excluding ATL/RG). Expected survival rates are derived from life tables by socio-economic status, geography and race developed by the SEER program.^d Based on follow-up of patients into 2015.

Period survival provides a 2014 estimate of survival by piecing together the most recent conditional survival estimates from several cohorts. It is computed here using three year calendar blocks (2010-2012: 0-1 year survival), (2009-2011: 1-2 year survival), (2008-2010: 2-3 year survival), (2007-2009: 3-4 year survival), (2006-2008: 4-5 years survival).

^e Stage at diagnosis is classified using SEER Summary Stage 2000. Stage distribution percentages may not sum to 100 due to rounding.^f The difference between 1975-1977 and 2008-2014 is statistically significant (p<.05).^g The standard error is between 5 and 10 percentage points.^h The standard error is greater than 10 percentage points.

- Statistic could not be calculated due to fewer than 25 cases during the time period.

Table 10.6
Kaposi Sarcoma

5-Year Relative and Period Survival (Percent) by Race, Sex, Diagnosis Year, Stage and Age

	All Races			Whites			Blacks		
	Total	Males	Females	Total	Males	Females	Total	Males	Females
5-Year Relative Survival (Percent)									
Year of Diagnosis:									
1960-1963 ^a	-	-	-	-	-	-	-	-	-
1970-1973 ^a	-	-	-	-	-	-	-	-	-
1975-1977 ^b	80.7 ^f	80.1 ^f	-	79.9 ^f	79.0 ^f	-	-	-	-
1978-1980 ^b	78.3 ^f	79.4 ^f	73.1 ^g	78.0 ^f	78.4 ^f	72.5 ^g	-	-	-
1981-1983 ^b	35.7	33.4	64.3 ^g	34.0	31.6	64.2 ^g	-	-	-
1984-1986 ^b	13.0	11.7	70.5 ^g	12.8	11.4	70.2 ^g	16.8	15.7	-
1987-1989 ^b	9.9	9.3	68.5 ^g	9.4	8.8	72.3 ^g	12.4	11.3	-
1990-1992 ^b	9.3	8.5	53.9 ^f	8.9	8.2	55.4 ^f	11.8	10.8	-
1993-1995 ^b	21.8	21.0	54.7 ^f	22.1	21.2	63.1 ^g	17.5	16.7	-
1996-1998 ^b	52.3	51.5	71.4 ^g	56.9	55.8	85.9 ^f	40.1	39.6	-
1999-2001 ^b	58.2	57.7	61.0 ^f	64.7	63.1	79.2 ^f	44.1	45.6	-
2002-2004 ^b	64.6	63.7	71.1 ^g	75.1	74.0	76.9 ^g	42.0	42.2	-
2005-2007 ^b	74.1	73.8	74.6 ^f	81.6	81.2	-	60.2	60.1	-
2008-2014 ^b	76.8 ^e	77.1	71.7 ^f	82.4	82.6	75.8 ^f	64.0	65.6	36.5 ^g
5-Year Period Survival (Percent) ^{cd}									
2014	75.4	75.3	72.5	77.4	76.9	76.7	68.4	69.9	-
5-Year Relative Survival (Percent), 2008-2014 ^c									
Age at Diagnosis:									
Ages <45	68.7	69.4	36.9 ^g	72.3	72.6	-	61.7	63.0	31.6 ^g
Ages 45-54	72.1	72.7	-	72.1	71.8	-	66.5	69.5	-
Ages 55-64	78.6	78.9	-	79.8	78.9	-	71.1 ^f	76.7 ^f	-
Ages 65-74	83.1	82.1	85.4 ^f	83.6	81.5	89.9 ^f	-	-	-
Ages 75+	83.8	85.9	77.3 ^f	84.1	86.7	76.3 ^f	-	-	-
Ages <65	70.9	71.5	52.5 ^f	73.5	73.4	79.8 ^f	63.3	65.2	32.5 ^f
Ages 65+	84.1	85.1	80.6	84.7	85.8	80.9 ^f	63.1 ^g	-	-

^a

Based on End Results data from a series of hospital registries and one population-based registry.

^b

SEER 9 areas (San Francisco, Connecticut, Detroit, Hawaii, Iowa, New Mexico, Seattle, Utah, Atlanta).

Based on follow-up of patients into 2015. [Expected survival rates](#) are derived from the U.S. Annual Life Tables.^c

SEER 18 areas (San Francisco, Connecticut, Detroit, Hawaii, Iowa, New Mexico, Seattle, Utah, Atlanta, San Jose-Monterey, Los Angeles, Alaska Native Registry, Rural Georgia, California excluding SF/SJM/LA, Kentucky, Louisiana, New Jersey and Georgia excluding ATL/RG). Expected survival rates are derived from life tables by socio-economic status, geography and race developed by the SEER program.

^d

Based on follow-up of patients into 2015.

Period survival provides a 2014 estimate of survival by piecing together the most recent conditional survival estimates from several cohorts. It is computed here using three year calendar blocks (2010-2012: 0-1 year survival),

(2009-2011: 1-2 year survival), (2008-2010: 2-3 year survival), (2007-2009: 3-4 year survival), (2006-2008: 4-5 years survival).

^eThe difference between 1975-1977 and 2008-2014 is statistically significant ($p < .05$).^f

The standard error is between 5 and 10 percentage points.

^g

The standard error is greater than 10 percentage points.

-

Statistic could not be calculated due to fewer than 25 cases during the time period.

Table 11.8
Cancer of the Kidney and Renal Pelvis (Invasive)

5-Year Relative and Period Survival (Percent) by Race, Sex, Diagnosis Year, Stage and Age

	All Races			Whites			Blacks		
	Total	Males	Females	Total	Males	Females	Total	Males	Females
5-Year Relative Survival (Percent)									
Year of Diagnosis:									
1960-1963 ^a	-	-	-	37	36	39	38	38	37
1970-1973 ^a	-	-	-	46	44	50	44	40	49
1975-1977 ^b	50.1	50.2	49.8	49.8	50.1	49.3	48.8	47.9	50.4 ^g
1978-1980 ^b	52.9	52.7	53.3	52.6	52.8	52.1	56.9	51.9	62.8 ^g
1981-1983 ^b	50.0	51.1	48.2	49.9	51.2	47.6	50.6	50.2	51.2
1984-1986 ^b	54.6	55.1	53.7	54.7	55.4	53.5	52.6	49.2	57.5
1987-1989 ^b	56.7	57.1	56.1	57.3	58.0	56.1	54.8	53.0	57.0
1990-1992 ^b	60.2	60.5	59.6	60.7	61.2	59.7	57.0	55.2	59.1
1993-1995 ^b	61.5	61.7	61.1	62.0	62.9	60.7	57.6	54.2	62.1
1996-1998 ^b	62.5	62.9	61.9	62.1	62.6	61.1	66.9	68.1	64.5
1999-2001 ^b	64.9	63.4	67.3	64.9	63.6	66.9	64.0	59.2	69.4
2002-2004 ^b	69.2	69.5	68.8	69.3	69.8	68.7	65.3	64.5	66.4
2005-2007 ^b	74.5	73.5	75.9	74.6	73.6	76.0	74.5	74.5	74.5
2008-2014 ^b	75.2 ^f	74.4 ^f	76.6 ^f	74.9 ^f	74.1 ^f	76.4 ^f	76.9 ^f	76.5 ^f	77.6 ^f
5-Year Period Survival (Percent) ^{cd}									
2014	74.9	74.1	76.4	74.8	73.9	76.3	76.4	75.3	78.2
Stage Distribution (%) 2008-2014 ^{ce}									
All Stages									
Number of cases	77,337	48,405	28,932	62,772	39,557	23,215	8,977	5,327	3,650
Percent	100%	100%	100%	100%	100%	100%	100%	100%	100%
Localized	65	63	68	64	63	67	71	70	73
Regional	16	17	15	17	18	15	12	12	11
Distant	16	17	14	16	17	14	14	15	12
Unstaged	3	3	3	3	3	3	3	3	3
5-Year Relative Survival (Percent), 2008-2014 ^c									
Age at Diagnosis:									
Ages <45	87.8	85.8	90.6	89.3	87.5	91.8	80.8	77.1	85.9
Ages 45-54	80.6	78.5	84.6	80.5	78.2	84.9	80.1	78.7	82.9
Ages 55-64	75.9	74.4	79.0	76.0	74.5	79.1	76.1	74.4	79.0
Ages 65-74	73.6	72.6	75.5	73.7	72.5	75.9	73.3	73.2	73.5
Ages 75+	58.9	59.9	57.9	58.9	59.8	57.8	58.8	57.9	59.5
Ages <65	79.7	77.7	83.3	79.9	77.9	83.6	78.4	76.4	81.9
Ages 65+	67.5	67.8	67.1	67.4	67.6	67.1	68.5	69.0	68.0
Stage ^e :									
All Stages	74.5	73.7	75.8	74.4	73.6	75.8	75.1	74.2	76.3
Localized	92.6	92.5	92.8	92.8	92.5	93.3	91.1	91.8	90.1
Regional	68.7	69.8	66.6	69.1	70.4	66.7	62.3	61.4	63.6
Distant	11.6	11.3	12.1	11.7	11.8	11.6	9.4	7.4	13.2
Unstaged	38.0	39.8	35.5	35.7	37.0	33.9	45.8	51.5 ^g	38.2 ^g

^a Based on End Results data from a series of hospital registries and one population-based registry.

^b SEER 9 areas (San Francisco, Connecticut, Detroit, Hawaii, Iowa, New Mexico, Seattle, Utah, Atlanta).

Based on follow-up of patients into 2015. [Expected survival rates](#) are derived from the U.S. Annual Life Tables.

^c SEER 18 areas (San Francisco, Connecticut, Detroit, Hawaii, Iowa, New Mexico, Seattle, Utah, Atlanta, San Jose-Monterey, Los Angeles, Alaska Native Registry, Rural Georgia, California excluding SF/SJM/LA, Kentucky, Louisiana, New Jersey and Georgia excluding ATL/RG). Expected survival rates are derived from life tables by socio-economic status, geography and race developed by the SEER program.

Based on follow-up of patients into 2015.

^d Period survival provides a 2014 estimate of survival by piecing together the most recent conditional survival estimates from several cohorts. It is computed here using three year calendar blocks (2010-2012: 0-1 year survival), (2009-2011: 1-2 year survival), (2008-2010: 2-3 year survival), (2007-2009: 3-4 year survival), (2006-2008: 4-5 years survival).

^e Stage at diagnosis is classified using SEER Summary Stage 2000. Stage distribution percentages may not sum to 100 due to rounding.

^f The difference between 1975-1977 and 2008-2014 is statistically significant (p<.05).

^g The standard error is between 5 and 10 percentage points.

^h The standard error is greater than 10 percentage points.

- Statistic could not be calculated due to fewer than 25 cases during the time period.

Table 12.8
Cancer of the Larynx (Invasive)

5-Year Relative and Period Survival (Percent) by Race, Sex, Diagnosis Year, Stage and Age

	All Races			Whites			Blacks		
	Total	Males	Females	Total	Males	Females	Total	Males	Females
5-Year Relative Survival (Percent)									
Year of Diagnosis:									
1960-1963 ^a	-	-	-	53	54	46	-	-	-
1970-1973 ^a	-	-	-	62	63	56	-	-	-
1975-1977 ^b	66.0	66.6	62.6	66.7	67.4	62.3	58.2	57.1	63.3 ^g
1978-1980 ^b	65.3	65.5	64.6	66.2	66.4	65.4	56.9	57.2	55.8 ^g
1981-1983 ^b	68.1	68.4	66.8	69.5	69.8	68.4	56.5	57.7	50.7 ^g
1984-1986 ^b	65.3	65.9	62.2	67.0	67.6	64.0	53.3	53.7	51.1 ^g
1987-1989 ^b	65.5	66.6	61.1	67.0	68.5	60.7	56.1	54.3	61.3 ^g
1990-1992 ^b	65.8	66.7	62.3	67.7	68.5	64.4	53.7	54.3	51.3 ^g
1993-1995 ^b	63.6	65.2	56.6	65.1	67.0	57.6	53.1	54.5	47.4 ^g
1996-1998 ^b	65.0	66.8	58.7	66.9	68.6	61.1	53.7	56.6	45.0 ^g
1999-2001 ^b	63.3	64.2	59.6	65.2	66.3	60.8	49.8	49.1	52.4 ^g
2002-2004 ^b	61.8	62.0	60.8	64.4	64.2	65.0	50.8	53.6	41.4 ^g
2005-2007 ^b	62.3	62.7	60.6	64.1	64.5	62.3	50.3	49.7	52.5 ^g
2008-2014 ^b	62.4 ^f	63.1 ^f	59.1	64.3	65.0	61.2	51.3	52.5	46.9 ^g
5-Year Period Survival (Percent) ^{cd}									
2014	60.4	60.5	60.0	61.8	61.9	61.3	51.0	50.8	51.9
Stage Distribution (%) 2008-2014 ^{ce}									
All Stages									
Number of cases	16,218	13,121	3,097	12,960	10,491	2,469	2,509	1,982	527
Percent	100%	100%	100%	100%	100%	100%	100%	100%	100%
Localized	55	56	48	57	58	51	45	47	35
Regional	23	21	31	22	20	30	26	23	36
Distant	19	20	18	18	18	17	27	27	26
Unstaged	3	4	3	3	4	2	2	2	3
5-Year Relative Survival (Percent), 2008-2014 ^c									
Age at Diagnosis:									
Ages <45	77.1	73.5	85.7	81.5	78.8	87.8	58.0 ^g	52.6 ^g	-
Ages 45-54	61.9	62.1	61.0	63.7	63.4	64.7	53.5	56.1	46.2 ^g
Ages 55-64	61.0	60.9	61.2	62.8	62.7	63.0	51.4	51.5	50.7
Ages 65-74	60.0	61.2	53.7	60.4	61.7	54.1	52.5	53.9	45.0 ^g
Ages 75+	57.8	60.2	47.8	58.4	61.1	47.0	48.0	45.2 ^g	54.9 ^h
Ages <65	62.3	62.1	63.4	64.3	63.9	66.0	52.4	52.9	50.4
Ages 65+	59.1	60.7	51.3	59.6	61.4	51.2	51.2	51.7	47.9 ^g
Stage ^e :									
All Stages	60.9	61.4	58.4	62.1	62.7	59.6	52.0	52.5	50.0
Localized	77.5	78.3	74.1	77.9	78.5	75.2	71.6	72.6	65.4
Regional	45.6	44.5	48.6	46.2	45.4	48.2	42.0	39.3	48.9
Distant	33.5	33.3	34.1	33.8	33.8	33.9	31.2	31.1	31.6
Unstaged	54.6	54.6	52.9 ^g	56.8	57.2	52.8 ^g	32.8 ^g	30.8 ^g	-

^a Based on End Results data from a series of hospital registries and one population-based registry.

^b SEER 9 areas (San Francisco, Connecticut, Detroit, Hawaii, Iowa, New Mexico, Seattle, Utah, Atlanta).

Based on follow-up of patients into 2015. [Expected survival rates](#) are derived from the U.S. Annual Life Tables.

^c SEER 18 areas (San Francisco, Connecticut, Detroit, Hawaii, Iowa, New Mexico, Seattle, Utah, Atlanta, San Jose-Monterey, Los Angeles, Alaska Native Registry, Rural Georgia, California excluding SF/SJM/LA, Kentucky, Louisiana, New Jersey and Georgia excluding ATL/RG). Expected survival rates are derived from life tables by socio-economic status, geography and race developed by the SEER program.

Based on follow-up of patients into 2015.

^d Period survival provides a 2014 estimate of survival by piecing together the most recent conditional survival estimates from several cohorts. It is computed here using three year calendar blocks (2010-2012: 0-1 year survival), (2009-2011: 1-2 year survival), (2008-2010: 2-3 year survival), (2007-2009: 3-4 year survival), (2006-2008: 4-5 years survival).

^e Stage at diagnosis is classified using SEER Summary Stage 2000. Stage distribution percentages may not sum to 100 due to rounding.

^f The difference between 1975-1977 and 2008-2014 is statistically significant ($p < .05$).

^g The standard error is between 5 and 10 percentage points.

^h The standard error is greater than 10 percentage points.

- Statistic could not be calculated due to fewer than 25 cases during the time period.

Table 13.14
Leukemia

5-Year Relative and Period Survival (Percent) by Race, Sex, Diagnosis Year and Age

	All Races			Whites			Blacks		
	Total	Males	Females	Total	Males	Females	Total	Males	Females
5-Year Relative Survival (Percent)									
Year of Diagnosis:									
1960-1963 ^a	-	-	-	14	-	-	-	-	-
1970-1973 ^a	-	-	-	22	-	-	-	-	-
1975-1977 ^b	34.1	33.0	35.6	34.5	33.6	35.8	33.4	30.4	36.7
1978-1980 ^b	36.0	35.0	37.3	36.7	35.8	38.0	28.2	27.3	29.3
1981-1983 ^b	37.3	36.9	37.8	38.1	37.8	38.5	33.9	33.4	34.3
1984-1986 ^b	40.5	40.1	41.1	41.6	41.3	42.0	32.7	31.5	34.1
1987-1989 ^b	42.9	44.0	41.3	43.9	45.5	41.8	35.0	32.7	37.8
1990-1992 ^b	45.2	44.6	46.1	46.5	46.2	46.8	35.7	30.5	41.3
1993-1995 ^b	47.6	48.4	46.4	48.7	49.5	47.5	41.3	41.6	40.9
1996-1998 ^b	48.3	48.5	48.1	49.7	49.7	49.8	38.6	39.0	38.0
1999-2001 ^b	50.9	52.0	49.5	52.0	53.0	50.7	43.4	44.7	42.0
2002-2004 ^b	58.2	58.3	58.0	59.0	59.2	58.7	53.7	54.0	53.2
2005-2007 ^b	62.3	63.5	60.7	63.3	64.3	61.9	54.6	57.3	51.2
2008-2014 ^b	64.5 ^e	66.1 ^e	62.4 ^e	65.6 ^e	67.1 ^e	63.6 ^e	58.2 ^e	59.4 ^e	56.7 ^e
5-Year Period Survival (Percent) ^{cd}									
2014	61.9	63.3	60.0	62.2	63.3	60.7	55.4	58.1	52.0
5-Year Relative Survival (Percent), 2008-2014 ^c									
Age at Diagnosis:									
Ages <45	75.4	74.9	76.1	76.5	75.5	77.7	67.5	67.3	67.7
Ages 45-54	70.4	71.8	68.4	71.7	72.8	70.1	60.9	63.5	57.5
Ages 55-64	68.6	69.4	67.4	69.7	70.4	68.5	56.7	56.4	56.9
Ages 65-74	59.1	59.1	59.1	59.7	59.3	60.1	52.2	52.1	52.2
Ages 75+	41.0	41.8	40.2	41.8	42.5	41.1	32.7	34.5	30.7
Ages <65	71.9	72.2	71.6	73.0	73.0	73.0	62.6	62.9	62.1
Ages 65+	49.1	50.3	47.6	49.7	50.6	48.4	42.8	44.7	40.7

^a Based on End Results data from a series of hospital registries and one population-based registry.^b SEER 9 areas (San Francisco, Connecticut, Detroit, Hawaii, Iowa, New Mexico, Seattle, Utah, Atlanta).Based on follow-up of patients into 2015. [Expected survival rates](#) are derived from the U.S. Annual Life Tables.^c SEER 18 areas (San Francisco, Connecticut, Detroit, Hawaii, Iowa, New Mexico, Seattle, Utah, Atlanta, San Jose-Monterey, Los Angeles, Alaska Native Registry, Rural Georgia, California excluding SF/SJM/LA, Kentucky, Louisiana, New Jersey and Georgia excluding ATL/RG). Expected survival rates are derived from life tables by socio-economic status, geography and race developed by the SEER program.^d Based on follow-up of patients into 2015.

Period survival provides a 2014 estimate of survival by piecing together the most recent conditional survival estimates from several cohorts. It is computed here using three year calendar blocks (2010-2012: 0-1 year survival), (2009-2011: 1-2 year survival), (2008-2010: 2-3 year survival), (2007-2009: 3-4 year survival), (2006-2008: 4-5 years survival).

^e The difference between 1975-1977 and 2008-2014 is statistically significant ($p < .05$).^f The standard error is between 5 and 10 percentage points.^g The standard error is greater than 10 percentage points.

- Statistic could not be calculated due to fewer than 25 cases during the time period.

Table 13.15
Lymphocytic Leukemia

5-Year Relative and Period Survival (Percent) by Race, Sex, Diagnosis Year and Age

	All Races			Whites			Blacks		
	Total	Males	Females	Total	Males	Females	Total	Males	Females
<u>Acute Lymphocytic Leukemia</u>									
5-Year Relative Survival (Percent)									
Year of Diagnosis:									
1975-1977 ^a	40.6	36.9	45.6	40.8	37.4	45.7	33.5 ^e	-	-
...									
1987-1989 ^a	54.4	53.7	55.2	55.0	54.7	55.3	44.7 ^e	42.0 ^e	47.1 ^e
1990-1992 ^a	58.0	54.5	63.1	57.7	54.9	62.0	57.1 ^e	50.4 ^e	63.3 ^e
1993-1995 ^a	60.2	57.8	63.6	59.8	57.8	62.7	53.2 ^e	45.9 ^e	63.8 ^e
1996-1998 ^a	65.5	64.3	66.9	66.4	64.2	69.0	55.6 ^e	59.1 ^e	50.2 ^e
1999-2001 ^a	63.5	63.4	63.5	64.8	65.2	64.2	56.0 ^e	50.3 ^e	61.9 ^e
2002-2004 ^a	67.2	66.1	68.8	67.5	66.5	69.1	64.5 ^e	59.4 ^e	69.7 ^e
2005-2007 ^a	69.5	68.2	71.3	69.1	66.9	71.8	67.0	72.0 ^e	57.5 ^e
2008-2014 ^a	71.6 ^d	71.9 ^d	71.4 ^d	72.9 ^d	73.3 ^d	72.4 ^d	61.4 ^d	62.4	59.1 ^e
5-Year Period Survival (Percent) ^{bc}									
2014	68.7	68.9	68.5	68.7	68.5	68.9	62.4	64.3	60.0
5-Year Relative Survival (Percent), 2008-2014 ^b									
Age at Diagnosis:									
Ages <45	80.3	79.1	81.9	80.4	78.8	82.4	77.1	77.5	76.5
Ages 45-54	35.8	34.5	37.4	36.8	36.3	37.5	18.2 ^e	-	-
Ages 55-64	26.4	24.5	28.4	28.1	26.5	29.6	12.6 ^e	15.0 ^e	0.0
Ages 65-74	22.0	19.9	24.1	21.2	20.1	22.1	-	-	-
Ages 75+	10.0	11.4	8.0	10.4	11.0	9.8	0.0	-	-
Ages <65	72.7	71.9	73.9	73.0	71.9	74.4	67.6	68.3	66.4
Ages 65+	16.5	16.0	16.6	16.7	16.0	17.0	12.3 ^e	-	14.9 ^e
<u>Chronic Lymphocytic Leukemia</u>									
5-Year Relative Survival (Percent)									
Year of Diagnosis:									
1975-1977 ^a	67.1	64.7	70.3	67.9	65.4	71.1	56.9 ^e	55.1 ^e	59.0 ^e
...									
1987-1989 ^a	72.7	72.7	72.9	73.9	74.0	73.7	58.1	55.5 ^e	61.5 ^e
1990-1992 ^a	74.1	71.7	77.3	75.3	73.1	78.3	52.2	43.4 ^e	60.9 ^e
1993-1995 ^a	77.1	77.1	77.2	78.3	78.1	78.5	63.3	64.0 ^e	62.1 ^e
1996-1998 ^a	75.5	73.8	77.8	76.6	75.1	78.7	58.1	51.5 ^e	66.0 ^e
1999-2001 ^a	78.5	78.1	79.2	79.3	78.8	80.2	66.0	64.5 ^e	66.6 ^e
2002-2004 ^a	83.9	83.1	85.1	84.5	83.6	85.6	76.5	73.6 ^e	80.3 ^e
2005-2007 ^a	86.4	86.1	87.0	86.4	86.2	86.7	86.0	84.3 ^e	87.4 ^e
2008-2014 ^a	86.8 ^d	87.4 ^d	85.9 ^d	87.4 ^d	87.9 ^d	86.7 ^d	76.1 ^d	77.2 ^d	75.0
5-Year Period Survival (Percent) ^{bc}									
2014	83.9	84.1	83.6	83.9	83.8	83.9	72.3	75.6	67.4
5-Year Relative Survival (Percent), 2008-2014 ^b									
Age at Diagnosis:									
Ages <45	92.8	91.9	94.0	93.2	92.4	94.0	86.8 ^e	87.4 ^e	-
Ages 45-54	93.6	93.2	94.3	94.4	93.4	96.0	80.6	85.2	72.5 ^e
Ages 55-64	91.7	91.3	92.4	91.9	91.4	92.8	81.0	79.6	82.8
Ages 65-74	86.5	84.8	89.3	86.8	85.1	89.7	74.5	72.6	76.2
Ages 75+	72.0	72.4	71.7	72.1	72.5	71.7	57.4	57.2 ^e	55.6 ^e
Ages <65	92.4	91.9	93.1	92.7	92.1	93.9	81.4	82.4	79.5
Ages 65+	78.9	78.9	78.9	78.9	79.0	78.9	66.5	66.6	65.2

^a SEER 9 areas (San Francisco, Connecticut, Detroit, Hawaii, Iowa, New Mexico, Seattle, Utah, Atlanta).Based on follow-up of patients into 2015. [Expected survival rates](#) are derived from the U.S. Annual Life Tables.^b SEER 18 areas (San Francisco, Connecticut, Detroit, Hawaii, Iowa, New Mexico, Seattle, Utah, Atlanta, San Jose-Monterey, Los Angeles, Alaska Native Registry, Rural Georgia, California excluding SF/SJM/LA, Kentucky, Louisiana, New Jersey and Georgia excluding ATL/RG). Expected survival rates are derived from life tables by socio-economic status, geography and race developed by the SEER program.

Based on follow-up of patients into 2015.

^c Period survival provides a 2014 estimate of survival by piecing together the most recent conditional survival estimates from several cohorts. It is computed here using three year calendar blocks (2010-2012: 0-1 year survival), (2009-2011: 1-2 year survival), (2008-2010: 2-3 year survival), (2007-2009: 3-4 year survival), (2006-2008: 4-5 years survival).
^d The difference between 1975-1977 and 2008-2014 is statistically significant (p<.05).^e The standard error is between 5 and 10 percentage points.^f The standard error is greater than 10 percentage points.

- Statistic could not be calculated due to fewer than 25 cases during the time period.

Table 13.16
Myeloid Leukemia

5-Year Relative and Period Survival (Percent) by Race, Sex, Diagnosis Year and Age

	All Races			Whites			Blacks		
	Total	Males	Females	Total	Males	Females	Total	Males	Females
<u>Acute Myeloid Leukemia</u>									
5-Year Relative Survival (Percent)									
Year of Diagnosis:									
1975-1977 ^a	6.2	5.5	7.0	5.8	5.4	6.2	10.1	8.2	11.7
...									
1987-1989 ^a	11.5	9.2	14.1	11.3	9.7	13.2	9.2	4.4	15.7 ^e
1990-1992 ^a	13.8	12.6	15.2	13.5	12.2	15.0	13.5	12.9	13.9
1993-1995 ^a	16.2	14.9	17.5	15.4	14.1	16.8	21.5	20.6 ^e	22.0
1996-1998 ^a	17.0	15.9	18.3	15.6	14.5	17.1	22.1	25.2	18.2
1999-2001 ^a	19.2	18.8	19.7	18.7	17.6	19.9	19.3	24.8	14.2
2002-2004 ^a	23.4	20.9	26.4	23.2	20.8	26.0	25.3	26.5	24.0
2005-2007 ^a	25.1	22.8	27.6	25.0	22.5	27.8	20.3	15.8	24.1
2008-2014 ^a	28.1 ^d	28.4 ^d	27.7 ^d	27.5 ^d	27.6 ^d	27.2 ^d	29.1 ^d	27.8 ^d	30.3 ^d
5-Year Period Survival (Percent) ^{bc}									
2014	28.0	27.3	28.8	27.6	26.8	28.6	27.6	25.8	29.3
5-Year Relative Survival (Percent), 2008-2014 ^b									
Age at Diagnosis:									
Ages <45	59.5	57.4	61.6	60.8	58.7	63.1	51.9	47.0	56.2
Ages 45-54	42.1	40.9	43.4	43.2	42.2	44.4	36.2	33.5 ^e	38.9 ^e
Ages 55-64	29.6	28.0	31.8	30.6	28.7	33.3	21.3	21.6	21.0
Ages 65-74	12.7	12.1	13.7	13.1	12.5	14.0	13.2	9.5	16.8
Ages 75+	3.0	3.2	2.7	3.1	3.4	2.7	2.8	-	2.3
Ages <65	45.6	43.3	48.3	46.3	43.9	49.2	39.8	35.8	43.7
Ages 65+	7.1	7.3	6.9	7.3	7.6	6.9	7.8	6.7	8.7
<u>Chronic Myeloid Leukemia</u>									
5-Year Relative Survival (Percent)									
Year of Diagnosis:									
1975-1977 ^a	21.8	19.3	25.1	20.5	18.4	23.4	27.7 ^e	21.6 ^e	35.5 ^e
...									
1987-1989 ^a	30.3	30.6	29.8	30.1	31.0	29.0	33.3 ^e	28.1 ^e	41.3 ^e
1990-1992 ^a	30.7	29.6	32.2	30.3	30.0	30.6	34.9 ^e	25.5 ^e	44.9 ^e
1993-1995 ^a	35.5	35.3	35.8	35.2	35.2	35.2	35.6 ^e	32.8 ^e	40.2 ^e
1996-1998 ^a	37.1	37.7	36.3	38.0	37.6	38.5	31.0	30.4 ^e	31.4 ^e
1999-2001 ^a	47.3	45.9	49.2	45.9	44.1	48.3	49.0 ^e	49.6 ^e	48.1 ^e
2002-2004 ^a	54.2	52.8	56.0	52.4	51.2	53.8	63.0 ^e	62.1 ^e	64.0 ^e
2005-2007 ^a	62.2	63.3	60.5	61.3	62.2	59.9	59.7 ^e	63.1 ^e	54.9 ^e
2008-2014 ^a	68.7 ^d	67.1 ^d	70.8 ^d	67.7 ^d	66.1 ^d	69.5 ^d	73.1 ^d	70.1 ^d	76.2 ^d
5-Year Period Survival (Percent) ^{bc}									
2014	69.2	68.3	70.4	68.1	67.4	69.3	70.2	67.2	73.6
5-Year Relative Survival (Percent), 2008-2014 ^b									
Age at Diagnosis:									
Ages <45	88.9	87.3	91.2	90.7	88.6	93.8	77.6	75.7	80.1
Ages 45-54	85.3	83.1	88.5	85.8	83.9	88.5	85.0	82.6	87.7
Ages 55-64	77.6	75.0	81.3	77.2	74.9	80.8	71.1	65.2 ^e	76.6 ^e
Ages 65-74	58.1	55.1	62.4	57.6	54.4	62.4	61.0 ^e	53.1 ^e	67.8 ^e
Ages 75+	30.8	28.7	32.8	30.4	29.0	31.9	28.9 ^e	28.7 ^f	29.9 ^e
Ages <65	84.2	82.1	87.2	84.7	82.5	88.0	77.9	74.8	81.3
Ages 65+	43.6	42.1	45.6	43.0	41.7	44.8	47.8	46.2 ^e	49.6 ^e

^a SEER 9 areas (San Francisco, Connecticut, Detroit, Hawaii, Iowa, New Mexico, Seattle, Utah, Atlanta).Based on follow-up of patients into 2015. [Expected survival rates](#) are derived from the U.S. Annual Life Tables.^b SEER 18 areas (San Francisco, Connecticut, Detroit, Hawaii, Iowa, New Mexico, Seattle, Utah, Atlanta, San Jose-Monterey, Los Angeles, Alaska Native Registry, Rural Georgia, California excluding SF/SJM/LA, Kentucky, Louisiana, New Jersey and Georgia excluding ATL/RG). Expected survival rates are derived from life tables by socio-economic status, geography and race developed by the SEER program.

Based on follow-up of patients into 2015.

^c Period survival provides a 2014 estimate of survival by piecing together the most recent conditional survival estimates from several cohorts. It is computed here using three year calendar blocks (2010-2012: 0-1 year survival), (2009-2011: 1-2 year survival), (2008-2010: 2-3 year survival), (2007-2009: 3-4 year survival), (2006-2008: 4-5 years survival).
^d The difference between 1975-1977 and 2008-2014 is statistically significant (p<.05).^e The standard error is between 5 and 10 percentage points.^f The standard error is greater than 10 percentage points.

- Statistic could not be calculated due to fewer than 25 cases during the time period.

Table 14.8
Cancer of the Liver and Intrahepatic Bile Duct (Invasive)

5-Year Relative and Period Survival (Percent) by Race, Sex, Diagnosis Year, Stage and Age

	All Races			Whites			Blacks		
	Total	Males	Females	Total	Males	Females	Total	Males	Females
5-Year Relative Survival (Percent)									
Year of Diagnosis:									
1960-1963 ^a	-	-	-	-	-	-	-	-	-
1970-1973 ^a	-	-	-	-	-	-	-	-	-
1975-1977 ^b	3.4	1.8	6.3	3.4	1.9	5.8	1.8	0.0	5.6
1978-1980 ^b	3.3	2.2	5.4	3.3	2.2	4.8	3.6	3.0	5.0
1981-1983 ^b	3.7	2.9	5.2	3.9	3.0	5.4	2.8	2.1	4.7
1984-1986 ^b	5.7	3.7	9.5	5.7	3.7	9.1	4.4	2.1	9.1
1987-1989 ^b	4.9	3.2	8.0	5.7	3.4	9.4	2.7	1.6	4.9
1990-1992 ^b	5.6	5.0	7.0	6.2	5.1	8.3	2.6	2.0	3.6
1993-1995 ^b	5.6	5.3	6.1	5.2	4.9	5.7	4.0	2.8	7.3
1996-1998 ^b	8.6	8.3	9.1	8.4	7.6	10.2	4.6	5.9	2.0
1999-2001 ^b	11.3	10.9	12.1	10.3	9.6	11.7	7.6	6.8	9.5
2002-2004 ^b	14.8	14.9	14.6	14.1	14.6	12.9	9.6	7.3	15.8
2005-2007 ^b	17.5	17.4	17.7	16.8	17.0	16.2	12.5	10.8	17.2
2008-2014 ^b	18.8 ^f	19.1 ^f	18.0 ^f	18.1 ^f	18.5 ^f	17.1 ^f	14.6 ^f	15.2	13.1 ^f
5-Year Period Survival (Percent) ^{cd}									
2014	17.9	17.6	18.7	17.2	17.0	17.8	14.7	14.0	16.6
Stage Distribution (%) 2008-2014 ^{ce}									
All Stages									
Number of cases	47,079	34,356	12,723	32,940	24,194	8,746	6,096	4,531	1,565
Percent	100%	100%	100%	100%	100%	100%	100%	100%	100%
Localized	44	44	43	43	44	42	42	42	43
Regional	27	28	25	27	27	25	29	30	27
Distant	18	18	18	18	17	19	19	20	19
Unstaged	12	11	14	12	11	14	9	9	11
5-Year Relative Survival (Percent), 2008-2014 ^c									
Age at Diagnosis:									
Ages <45	39.2	35.7	46.1	45.4	42.4	50.5	26.1	24.8	28.6 ^g
Ages 45-54	20.0	18.5	26.3	19.7	18.2	26.6	14.3	13.9	15.3
Ages 55-64	20.0	19.3	23.2	19.9	19.3	22.5	14.4	12.8	21.1
Ages 65-74	15.7	15.4	16.4	13.9	13.5	14.8	13.5	13.7	13.0
Ages 75+	8.2	8.6	7.7	7.0	7.6	6.1	6.3	5.5	6.7
Ages <65	21.4	20.0	26.7	21.4	20.0	26.8	15.1	13.7	20.1
Ages 65+	12.3	12.7	11.6	10.8	11.2	10.0	11.3	11.9	10.1
Stage ^e :									
All Stages	17.7	17.5	18.4	17.0	16.9	17.5	14.0	13.3	16.2
Localized	31.3	31.1	32.0	30.1	29.9	30.6	25.9	24.4	30.0
Regional	10.6	10.3	11.5	10.7	10.4	11.9	7.5	7.1	8.9
Distant	2.4	2.0	3.5	2.6	2.1	3.9	0.9	1.1	0.0
Unstaged	6.3	6.1	6.8	5.4	5.2	5.9	8.2	8.9	6.7

^a Based on End Results data from a series of hospital registries and one population-based registry.

^b SEER 9 areas (San Francisco, Connecticut, Detroit, Hawaii, Iowa, New Mexico, Seattle, Utah, Atlanta).

Based on follow-up of patients into 2015. [Expected survival rates](#) are derived from the U.S. Annual Life Tables.

^c SEER 18 areas (San Francisco, Connecticut, Detroit, Hawaii, Iowa, New Mexico, Seattle, Utah, Atlanta, San Jose-Monterey, Los Angeles, Alaska Native Registry, Rural Georgia, California excluding SF/SJM/LA, Kentucky, Louisiana, New Jersey and Georgia excluding ATL/RG). Expected survival rates are derived from life tables by socio-economic status, geography and race developed by the SEER program.

Based on follow-up of patients into 2015.

^d Period survival provides a 2014 estimate of survival by piecing together the most recent conditional survival estimates from several cohorts. It is computed here using three year calendar blocks (2010-2012: 0-1 year survival), (2009-2011: 1-2 year survival), (2008-2010: 2-3 year survival), (2007-2009: 3-4 year survival), (2006-2008: 4-5 years survival).

^e Stage at diagnosis is classified using SEER Summary Stage 2000. Stage distribution percentages may not sum to 100 due to rounding.

^f The difference between 1975-1977 and 2008-2014 is statistically significant (p<.05).

^g The standard error is between 5 and 10 percentage points.

^h The standard error is greater than 10 percentage points.

- Statistic could not be calculated due to fewer than 25 cases during the time period.

Table 15.12
Cancer of the Lung and Bronchus (Invasive)

5-Year Relative and Period Survival (Percent) by Race, Sex, Diagnosis Year, Stage and Age

	All Races			Whites			Blacks		
	Total	Males	Females	Total	Males	Females	Total	Males	Females
5-Year Relative Survival (Percent)									
Year of Diagnosis:									
1960-1963 ^a	-	-	-	8	7	11	5	5	6
1970-1973 ^a	-	-	-	10	9	14	7	6	10
1975-1977 ^b	12.2	11.1	15.3	12.3	11.1	15.4	11.2	10.5	13.8
1978-1980 ^b	12.8	11.3	16.3	12.9	11.5	16.2	11.7	9.7	17.8
1981-1983 ^b	13.1	11.5	16.4	13.3	11.7	16.6	11.4	10.2	14.9
1984-1986 ^b	12.8	11.2	16.0	13.0	11.2	16.3	11.1	10.3	12.8
1987-1989 ^b	13.0	11.9	15.0	13.3	12.0	15.3	10.9	10.8	11.1
1990-1992 ^b	13.6	12.1	15.9	14.0	12.5	16.2	10.5	9.3	12.7
1993-1995 ^b	14.3	12.5	16.9	14.5	12.6	17.1	12.8	11.2	15.7
1996-1998 ^b	14.6	12.9	16.8	14.8	13.1	17.0	12.3	10.7	15.0
1999-2001 ^b	15.3	13.1	17.9	15.5	13.3	18.0	12.7	10.8	15.4
2002-2004 ^b	16.1	14.2	18.4	16.5	14.4	18.9	13.2	12.8	13.9
2005-2007 ^b	17.8	15.2	20.6	18.3	15.7	21.1	14.0	12.2	16.1
2008-2014 ^b	19.9 ^f	16.7 ^f	23.3 ^f	20.0 ^f	16.9 ^f	23.2 ^f	18.3 ^f	15.0 ^f	21.9 ^f
5-Year Period Survival (Percent) ^{cd}									
2014	19.0	15.7	22.7	19.1	15.8	22.7	16.4	13.3	20.3
Stage Distribution (%) 2008-2014 ^{ce}									
All Stages									
Number of cases	264,275	138,788	125,487	214,482	111,164	103,318	30,645	16,916	13,729
Percent	100%	100%	100%	100%	100%	100%	100%	100%	100%
Localized	16	14	18	17	15	19	13	12	15
Regional	22	22	22	22	22	22	22	21	23
Distant	57	59	55	57	58	54	61	63	58
Unstaged	5	4	5	5	5	5	4	4	4
5-Year Relative Survival (Percent), 2008-2014 ^c									
Age at Diagnosis:									
Ages <45	33.2	28.0	38.1	34.6	29.0	39.8	27.3	24.0	31.1
Ages 45-54	21.3	16.9	26.1	21.7	17.2	26.6	18.5	14.2	23.4
Ages 55-64	20.2	16.8	24.7	20.3	16.9	24.5	17.6	14.5	22.3
Ages 65-74	20.0	16.6	24.0	20.3	16.9	24.2	16.0	13.1	19.6
Ages 75+	14.1	11.8	16.2	14.3	12.0	16.3	11.3	8.1	14.0
Ages <65	21.2	17.3	25.9	21.4	17.5	26.0	18.3	14.9	23.1
Ages 65+	17.1	14.4	19.9	17.3	14.6	20.1	14.0	11.3	17.0
Stage ^e :									
All Stages	18.6	15.5	22.0	18.7	15.7	22.0	16.2	13.2	19.8
Localized	56.3	50.2	61.5	56.3	50.5	61.3	52.1	44.6	59.1
Regional	29.7	26.2	33.6	29.6	26.2	33.3	27.2	23.7	31.1
Distant	4.7	3.9	5.7	4.5	3.7	5.5	4.6	3.9	5.6
Unstaged	7.8	7.2	8.4	7.0	6.4	7.6	10.2	8.3	12.7

^a Based on End Results data from a series of hospital registries and one population-based registry.

^b SEER 9 areas (San Francisco, Connecticut, Detroit, Hawaii, Iowa, New Mexico, Seattle, Utah, Atlanta).

Based on follow-up of patients into 2015. [Expected survival rates](#) are derived from the U.S. Annual Life Tables.

^c SEER 18 areas (San Francisco, Connecticut, Detroit, Hawaii, Iowa, New Mexico, Seattle, Utah, Atlanta, San Jose-Monterey, Los Angeles, Alaska Native Registry, Rural Georgia, California excluding SF/SJM/LA, Kentucky, Louisiana, New Jersey and Georgia excluding ATL/RG). Expected survival rates are derived from life tables by socio-economic status, geography and race developed by the SEER program.

Based on follow-up of patients into 2015.

^d Period survival provides a 2014 estimate of survival by piecing together the most recent conditional survival estimates from several cohorts. It is computed here using three year calendar blocks (2010-2012: 0-1 year survival), (2009-2011: 1-2 year survival), (2008-2010: 2-3 year survival), (2007-2009: 3-4 year survival), (2006-2008: 4-5 years survival).

^e Stage at diagnosis is classified using SEER Summary Stage 2000. Stage distribution percentages may not sum to 100 due to rounding.

^f The difference between 1975-1977 and 2008-2014 is statistically significant ($p < .05$).

^g The standard error is between 5 and 10 percentage points.

^h The standard error is greater than 10 percentage points.

- Statistic could not be calculated due to fewer than 25 cases during the time period.

Table 15.13
Small Cell Cancer of the Lung and Bronchus (Invasive)

5-Year Relative and Period Survival (Percent) by Race, Sex, Diagnosis Year, Stage and Age

	All Races			Whites			Blacks		
	Total	Males	Females	Total	Males	Females	Total	Males	Females
5-Year Relative Survival (Percent)									
Year of Diagnosis:									
1975-1977 ^a	3.6	3.1	4.8	3.7	3.1	4.9	3.7	3.8	3.6
1978-1980 ^a	4.2	3.2	6.5	4.3	3.3	6.4	3.1	2.4	5.0
1981-1983 ^a	4.5	3.5	6.2	4.6	3.6	6.1	5.3	4.1	8.2
1984-1986 ^a	4.5	3.5	6.2	4.7	3.6	6.4	3.5	2.2	5.6
1987-1989 ^a	5.1	3.9	6.6	5.1	3.9	6.8	4.0	3.3	5.1
1990-1992 ^a	5.4	4.5	6.4	5.4	4.5	6.5	4.2	3.9	4.4
1993-1995 ^a	6.4	5.1	7.9	6.3	5.0	7.6	6.7	4.0	10.4
1996-1998 ^a	5.8	5.2	6.5	6.0	5.4	6.6	3.6	2.6	4.5
1999-2001 ^a	5.7	4.8	6.7	5.6	4.4	6.9	5.2	6.0	4.2
2002-2004 ^a	6.5	4.7	8.2	6.5	4.4	8.4	5.3	5.3	5.1
2005-2007 ^a	6.8	5.0	8.6	6.8	5.0	8.5	6.5	3.5	9.5
2008-2014 ^a	6.7 ^e	5.5 ^e	7.9 ^e	6.6 ^e	5.3 ^e	7.9 ^e	6.6 ^e	5.9 ^e	7.0
5-Year Period Survival (Percent) ^{bc}									
2014	6.2	4.7	7.7	6.2	4.6	7.6	7.0	5.3	8.9
Stage Distribution (%) 2008-2014 ^{bd}									
All Stages									
Number of cases	34,106	17,114	16,992	29,507	14,571	14,936	3,105	1,590	1,515
Percent	100%	100%	100%	100%	100%	100%	100%	100%	100%
Localized	4	4	4	4	4	4	4	4	3
Regional	19	17	21	19	17	21	20	18	22
Distant	75	77	73	75	77	73	75	76	73
Unstaged	2	2	2	2	2	2	2	2	1
5-Year Relative Survival (Percent), 2008-2014 ^b									
Age at Diagnosis:									
Ages <45	13.4	12.0	15.1	13.6	12.2	15.3	9.3	-	-
Ages 45-54	8.6	6.4	10.8	8.4	5.8	10.9	10.9	10.3	11.7
Ages 55-64	7.9	6.0	10.0	7.8	5.9	9.8	7.8	4.6	11.0
Ages 65-74	6.1	4.8	7.4	6.1	4.6	7.6	5.5	5.4	5.5
Ages 75+	3.3	2.7	3.8	3.4	2.7	3.9	3.1	2.6	3.4
Ages <65	8.3	6.2	10.4	8.1	6.0	10.3	8.7	6.5	11.2
Ages 65+	4.9	4.0	5.9	5.0	3.9	6.1	4.6	4.5	4.7
Stage ^d :									
All Stages	6.3	4.9	7.7	6.3	4.8	7.8	6.7	5.5	7.8
Localized	28.5	24.5	32.2	28.2	23.6	32.3	34.5 ^f	33.5 ^f	32.8 ^f
Regional	14.9	12.3	17.0	15.0	12.2	17.1	15.1	11.7	18.3
Distant	2.9	2.2	3.6	2.9	2.2	3.5	3.3	2.7	3.9
Unstaged	8.8	6.8	10.8	8.4	5.1	11.5	4.7	10.6 ^f	-

Note: Small Cell Cancer of the Lung and Bronchus includes histologies 8002, 8041-8045.

^a SEER 9 areas (San Francisco, Connecticut, Detroit, Hawaii, Iowa, New Mexico, Seattle, Utah, Atlanta).

Based on follow-up of patients into 2015. [Expected survival rates](#) are derived from the U.S. Annual Life Tables.

^b SEER 18 areas (San Francisco, Connecticut, Detroit, Hawaii, Iowa, New Mexico, Seattle, Utah, Atlanta, San Jose-Monterey, Los Angeles, Alaska Native Registry, Rural Georgia, California excluding SF/SJM/LA, Kentucky, Louisiana, New Jersey and Georgia excluding ATL/RG). Expected survival rates are derived from life tables by socio-economic status, geography and race developed by the SEER program.

Based on follow-up of patients into 2015.

^c Period survival provides a 2014 estimate of survival by piecing together the most recent conditional survival estimates from several cohorts. It is computed here using three year calendar blocks (2010-2012: 0-1 year survival), (2009-2011: 1-2 year survival), (2008-2010: 2-3 year survival), (2007-2009: 3-4 year survival), (2006-2008: 4-5 years survival).

^d Stage at diagnosis is classified using SEER Summary Stage 2000. Stage distribution percentages may not sum to 100 due to rounding.

^e The difference between 1975-1977 and 2008-2014 is statistically significant ($p < .05$).

^f The standard error is between 5 and 10 percentage points.

^g The standard error is greater than 10 percentage points.

- Statistic could not be calculated due to fewer than 25 cases during the time period.

Table 15.14
Non-Small Cell Cancer of the Lung and Bronchus (Invasive)

5-Year Relative and Period Survival (Percent) by Race, Sex, Diagnosis Year, Stage and Age

	All Races			Whites			Blacks		
	Total	Males	Females	Total	Males	Females	Total	Males	Females
5-Year Relative Survival (Percent)									
Year of Diagnosis:									
1975-1977 ^a	16.4	14.8	21.0	16.7	15.0	21.4	13.4	12.4	17.7
1978-1980 ^a	16.7	14.8	21.4	17.0	15.2	21.5	14.2	11.6	22.8
1981-1983 ^a	17.1	15.0	21.8	17.5	15.4	22.1	13.9	12.2	19.2
1984-1986 ^a	16.6	14.4	21.0	17.0	14.7	21.5	13.1	11.9	16.4
1987-1989 ^a	16.9	15.2	19.8	17.3	15.5	20.5	13.2	12.9	13.9
1990-1992 ^a	17.7	15.5	21.1	18.3	16.2	21.7	12.8	11.1	16.2
1993-1995 ^a	18.7	16.1	22.5	19.3	16.5	23.2	15.1	13.3	18.5
1996-1998 ^a	19.4	16.7	22.9	19.9	17.1	23.5	15.3	12.8	19.4
1999-2001 ^a	20.0	16.8	24.0	20.7	17.5	24.6	14.8	12.0	18.9
2002-2004 ^a	19.6	17.0	22.8	20.4	17.6	23.7	14.9	13.9	16.4
2005-2007 ^a	21.5	18.3	25.2	22.5	19.1	26.3	15.7	13.6	18.1
2008-2014 ^a	24.2 ^e	20.2 ^e	28.6 ^e	24.7 ^e	20.7 ^e	29.0 ^e	21.0 ^e	16.9 ^e	25.6 ^e
5-Year Period Survival (Percent) ^{bc}									
2014	23.3	19.0	28.1	23.7	19.4	28.5	18.8	15.2	23.3
Stage Distribution (%) 2008-2014 ^{bd}									
All Stages									
Number of cases	198,878	105,730	93,148	158,856	83,531	75,325	24,312	13,524	10,788
Percent	100%	100%	100%	100%	100%	100%	100%	100%	100%
Localized	19	17	22	20	17	23	15	13	17
Regional	24	24	23	24	25	24	24	23	25
Distant	55	57	53	54	56	51	59	62	56
Unstaged	2	2	2	2	2	2	2	2	2
5-Year Relative Survival (Percent), 2008-2014 ^b									
Age at Diagnosis:									
Ages <45	35.0	29.3	40.2	37.0	30.5	42.7	28.2	25.2	31.7
Ages 45-54	24.0	18.9	29.5	24.9	19.7	30.5	19.6	14.6	25.1
Ages 55-64	23.6	19.5	29.0	24.1	19.9	29.4	19.3	16.0	24.4
Ages 65-74	24.1	20.0	29.0	24.8	20.6	29.5	18.5	15.0	22.9
Ages 75+	18.8	15.5	22.1	19.2	15.9	22.5	14.7	10.6	18.5
Ages <65	24.3	19.8	29.9	25.0	20.4	30.5	19.8	16.1	25.0
Ages 65+	21.7	18.0	25.6	22.2	18.5	26.0	17.0	13.5	21.0
Stage ^d :									
All Stages	22.7	18.7	27.1	23.2	19.2	27.6	18.5	14.9	23.0
Localized	60.1	53.7	65.6	60.3	54.2	65.5	55.2	47.0	62.8
Regional	33.4	29.0	38.4	33.4	29.1	38.3	29.7	25.9	34.1
Distant	5.5	4.5	6.7	5.3	4.3	6.5	5.0	4.1	6.2
Unstaged	13.8	12.9	14.9	13.1	11.9	14.3	12.0	10.1	14.3

Note: Non-Small Cell Cancer of the Lung and Bronchus includes histologies 8003-8004, 8012-8015, 8021-8022, 8030-8035, 8046, 8050-8052, 8070-8076, 8078, 8082-8084, 8090, 8094, 8120, 8123, 8140-8141, 8143-8145, 8147, 8190, 8200-8201, 8211, 8240-8241, 8243-8246, 8249-8255, 8260, 8290, 8310, 8320, 8323, 8333, 8401, 8430, 8440, 8470-8471, 8480-8481, 8490, 8503, 8507, 8525, 8550, 8560, 8562, 8570-8572, 8574-8576.

^a SEER 9 areas (San Francisco, Connecticut, Detroit, Hawaii, Iowa, New Mexico, Seattle, Utah, Atlanta).

Based on follow-up of patients into 2015. [Expected survival rates](#) are derived from the U.S. Annual Life Tables.

^b SEER 18 areas (San Francisco, Connecticut, Detroit, Hawaii, Iowa, New Mexico, Seattle, Utah, Atlanta, San Jose-Monterey, Los Angeles, Alaska Native Registry, Rural Georgia, California excluding SF/SJM/LA, Kentucky, Louisiana, New Jersey and Georgia excluding ATL/RG). Expected survival rates are derived from life tables by socio-economic status, geography and race developed by the SEER program.

Based on follow-up of patients into 2015.

^c Period survival provides a 2014 estimate of survival by piecing together the most recent conditional survival estimates from several cohorts. It is computed here using three year calendar blocks (2010-2012: 0-1 year survival), (2009-2011: 1-2 year survival), (2008-2010: 2-3 year survival), (2007-2009: 3-4 year survival), (2006-2008: 4-5 years survival).

^d Stage at diagnosis is classified using SEER Summary Stage 2000. Stage distribution percentages may not sum to 100 due to rounding.

^e The difference between 1975-1977 and 2008-2014 is statistically significant ($p < .05$).

^f The standard error is between 5 and 10 percentage points.

^g The standard error is greater than 10 percentage points.

- Statistic could not be calculated due to fewer than 25 cases during the time period.

Table 16.8
Melanoma of the Skin (Invasive)

5-Year Relative and Period Survival (Percent) by Race, Sex, Diagnosis Year, Stage and Age

	All Races			Whites			Blacks		
	Total	Males	Females	Total	Males	Females	Total	Males	Females
5-Year Relative Survival (Percent)									
Year of Diagnosis:									
1960-1963 ^a	-	-	-	60	51	68	-	-	-
1970-1973 ^a	-	-	-	68	62	75	-	-	-
1975-1977 ^b	81.9	77.5	86.3	82.0	77.8	86.3	56.7 ^g	-	-
1978-1980 ^b	82.8	77.7	87.7	82.9	77.9	87.9	59.8 ^h	-	-
1981-1983 ^b	82.8	78.4	87.3	82.8	78.4	87.2	61.9 ^g	-	-
1984-1986 ^b	86.6	82.6	91.0	86.4	82.3	91.0	72.3 ^h	-	-
1987-1989 ^b	88.1	84.9	91.5	88.0	84.9	91.3	78.6 ^g	-	89.5 ^g
1990-1992 ^b	89.3	87.0	91.8	89.3	87.1	91.8	59.6 ^g	-	-
1993-1995 ^b	89.7	87.3	92.6	89.6	87.1	92.7	69.5 ^g	66.6 ^g	-
1996-1998 ^b	91.0	89.6	92.7	90.9	89.4	92.7	73.9 ^g	68.0 ^h	78.6 ^g
1999-2001 ^b	92.2	90.1	94.6	92.2	90.2	94.6	73.9 ^g	70.9 ^g	76.1 ^g
2002-2004 ^b	93.2	91.1	95.4	93.2	91.1	95.6	72.0 ^g	-	70.4 ^g
2005-2007 ^b	93.2	91.7	95.0	93.3	91.8	95.0	75.9 ^g	-	82.3 ^g
2008-2014 ^b	93.9 ^f	92.2 ^f	95.9 ^f	93.8 ^f	92.1 ^f	95.9 ^f	66.3 ^g	60.6 ^g	71.1 ^g
5-Year Period Survival (Percent) ^{cd}									
2014	91.8	89.9	94.4	91.2	89.0	94.0	63.8	56.9	67.5
Stage Distribution (%) 2008-2014 ^{ce}									
All Stages									
Number of cases	102,084	57,742	44,342	94,995	54,030	40,965	466	206	260
Percent	100%	100%	100%	100%	100%	100%	100%	100%	100%
Localized	84	82	86	83	81	86	54	48	59
Regional	9	10	7	9	10	8	24	28	22
Distant	4	5	3	4	5	3	16	17	15
Unstaged	4	3	4	3	3	4	5	7	4
5-Year Relative Survival (Percent), 2008-2014 ^c									
Age at Diagnosis:									
Ages <45	94.5	91.2	96.8	94.3	90.9	96.6	81.3	70.0 ^g	87.6 ^g
Ages 45-54	93.0	90.5	95.8	92.7	89.9	95.7	65.6 ^g	62.3 ^g	68.6 ^g
Ages 55-64	91.8	90.0	94.6	91.3	89.5	94.2	66.5 ^g	54.5 ^g	79.6 ^g
Ages 65-74	92.5	91.3	94.5	92.0	90.7	94.4	60.0 ^g	49.6 ^h	64.8 ^g
Ages 75+	85.9	85.7	86.1	84.6	84.4	85.0	47.2 ^g	41.2 ^h	49.2 ^h
Ages <65	93.0	90.4	95.8	92.6	90.0	95.6	71.4	61.6 ^g	79.4
Ages 65+	89.6	89.0	90.5	88.7	88.0	89.9	54.3 ^g	46.6 ^g	58.0 ^g
Stage ^e :									
All Stages	91.8	89.9	94.2	91.2	89.2	93.8	65.2	57.1	71.0
Localized	98.4	97.9	99.1	98.0	97.3	98.8	85.8	87.2 ^g	84.3
Regional	63.6	61.0	68.1	63.7	61.3	68.1	46.2 ^g	36.4 ^g	56.0 ^g
Distant	22.5	21.1	25.5	22.2	21.1	24.7	27.2 ^g	13.5 ^g	39.8 ^g
Unstaged	83.7	81.9	86.0	82.4	80.3	85.1	41.9 ^h	-	-

^a Based on End Results data from a series of hospital registries and one population-based registry.

^b SEER 9 areas (San Francisco, Connecticut, Detroit, Hawaii, Iowa, New Mexico, Seattle, Utah, Atlanta).

Based on follow-up of patients into 2015. [Expected survival rates](#) are derived from the U.S. Annual Life Tables.

^c SEER 18 areas (San Francisco, Connecticut, Detroit, Hawaii, Iowa, New Mexico, Seattle, Utah, Atlanta, San Jose-Monterey, Los Angeles, Alaska Native Registry, Rural Georgia, California excluding SF/SJM/LA, Kentucky, Louisiana, New Jersey and Georgia excluding ATL/RG). Expected survival rates are derived from life tables by socio-economic status, geography and race developed by the SEER program.

Based on follow-up of patients into 2015.

^d Period survival provides a 2014 estimate of survival by piecing together the most recent conditional survival estimates from several cohorts. It is computed here using three year calendar blocks (2010-2012: 0-1 year survival), (2009-2011: 1-2 year survival), (2008-2010: 2-3 year survival), (2007-2009: 3-4 year survival), (2006-2008: 4-5 years survival).

^e Stage at diagnosis is classified using SEER Summary Stage 2000. Stage distribution percentages may not sum to 100 due to rounding.

^f The difference between 1975-1977 and 2008-2014 is statistically significant ($p < .05$).

^g The standard error is between 5 and 10 percentage points.

^h The standard error is greater than 10 percentage points.

- Statistic could not be calculated due to fewer than 25 cases during the time period.

Table 17.4
Mesothelioma

5-Year Relative and Period Survival (Percent) by Race, Sex, Diagnosis Year, Stage and Age

	All Races			Whites			Blacks		
	Total	Males	Females	Total	Males	Females	Total	Males	Females
5-Year Relative Survival (Percent)									
Year of Diagnosis:									
1960-1963 ^a	-	-	-	-	-	-	-	-	-
1970-1973 ^a	-	-	-	-	-	-	-	-	-
1975-1977 ^b	9.7	3.0	26.7	10.4	3.3	27.4 ^f	-	-	-
1978-1980 ^b	6.0	5.5	8.1	5.9	5.2	8.7	-	-	-
1981-1983 ^b	7.7	5.3	15.1	8.1	5.4	16.2	-	-	-
1984-1986 ^b	6.6	4.3	13.9	6.1	3.7	14.1	-	-	-
1987-1989 ^b	6.2	4.6	12.2	6.3	4.8	12.1	4.8	-	-
1990-1992 ^b	7.7	4.2	20.6	7.4	4.1	20.1	10.2 ^f	8.5 ^f	-
1993-1995 ^b	6.5	3.2	18.7	5.9	2.8	18.0	9.0	8.0 ^f	-
1996-1998 ^b	9.8	8.2	15.2	9.8	8.0	16.2	11.4 ^f	-	-
1999-2001 ^b	7.6	5.3	15.9	6.7	5.0	13.0	-	-	-
2002-2004 ^b	6.4	4.7	11.6	5.9	4.3	10.9	7.9 ^f	-	-
2005-2007 ^b	9.1	6.2	17.4	9.8	6.5	20.2	6.1 ^f	-	-
2008-2014 ^b	10.2	7.1 ^e	20.6	9.8	7.0 ^e	19.7	12.2	0.0	-
5-Year Period Survival (Percent) ^{cd}									
2014	9.3	6.7	17.0	8.9	6.6	15.8	14.7	7.7	31.7
5-Year Relative Survival (Percent), 2008-2014 ^c									
Age at Diagnosis:									
Ages <45	47.1	37.7 ^f	58.6 ^f	45.4 ^f	38.1 ^f	56.2 ^f	-	-	-
Ages 45-54	21.9	12.9	37.2 ^f	21.8	12.8	38.0 ^f	22.4 ^f	-	-
Ages 55-64	11.8	9.8	17.0	11.7	9.5	17.2	9.3 ^f	0.0	-
Ages 65-74	9.5	8.0	14.7	9.7	8.5	13.9	7.2	-	-
Ages 75+	3.6	2.8	6.1	3.3	2.4	6.4	5.0	2.2	-
Ages <65	17.9	12.9	28.9	17.4	12.8	27.8	23.4	13.3 ^f	34.9 ^f
Ages 65+	6.1	5.1	9.5	6.1	5.1	9.3	5.9	3.6	10.6 ^f

^a Based on End Results data from a series of hospital registries and one population-based registry.^b SEER 9 areas (San Francisco, Connecticut, Detroit, Hawaii, Iowa, New Mexico, Seattle, Utah, Atlanta).Based on follow-up of patients into 2015. [Expected survival rates](#) are derived from the U.S. Annual Life Tables.^c SEER 18 areas (San Francisco, Connecticut, Detroit, Hawaii, Iowa, New Mexico, Seattle, Utah, Atlanta, San Jose-Monterey, Los Angeles, Alaska Native Registry, Rural Georgia, California excluding SF/SJM/LA, Kentucky, Louisiana, New Jersey and Georgia excluding ATL/RG). Expected survival rates are derived from life tables by socio-economic status, geography and race developed by the SEER program.^d Based on follow-up of patients into 2015.

Period survival provides a 2014 estimate of survival by piecing together the most recent conditional survival estimates from several cohorts. It is computed here using three year calendar blocks (2010-2012: 0-1 year survival), (2009-2011: 1-2 year survival), (2008-2010: 2-3 year survival), (2007-2009: 3-4 year survival), (2006-2008: 4-5 years survival).

^e The difference between 1975-1977 and 2008-2014 is statistically significant ($p < .05$).^f The standard error is between 5 and 10 percentage points.^g The standard error is greater than 10 percentage points.

- Statistic could not be calculated due to fewer than 25 cases during the time period.

Table 18.8
Myeloma

5-Year Relative and Period Survival (Percent) by Race, Sex, Diagnosis Year and Age

	All Races			Whites			Blacks		
	Total	Males	Females	Total	Males	Females	Total	Males	Females
5-Year Relative Survival (Percent)									
Year of Diagnosis:									
1960-1963 ^a	-	-	-	12	13	10	-	-	-
1970-1973 ^a	-	-	-	19	20	17	-	-	-
1975-1977 ^b	24.6	23.9	25.3	24.1	23.6	24.7	29.3	28.9	29.5
1978-1980 ^b	25.9	24.4	27.5	24.8	24.1	25.5	32.5	27.4	37.5
1981-1983 ^b	27.5	25.7	29.4	27.2	25.4	28.9	28.9	29.6	27.9
1984-1986 ^b	27.3	27.7	26.8	26.0	25.8	26.2	31.8	33.3	30.3
1987-1989 ^b	27.2	28.8	25.6	26.8	29.1	24.5	30.0	29.3	30.6
1990-1992 ^b	29.3	30.5	27.9	28.4	29.6	26.9	34.2	38.0	30.6
1993-1995 ^b	31.7	32.3	31.0	30.5	31.4	29.5	35.4	34.9	35.7
1996-1998 ^b	32.5	34.6	30.4	32.3	34.4	29.9	31.6	32.8	30.6
1999-2001 ^b	34.6	36.9	31.9	34.5	36.8	31.6	34.3	37.0	32.0
2002-2004 ^b	42.5	43.5	41.3	43.3	44.7	41.5	40.6	40.5	40.7
2005-2007 ^b	46.4	47.8	44.8	46.0	48.5	42.8	49.6	46.5	52.4
2008-2014 ^b	52.4 ^f	52.2 ^f	52.7 ^f	51.9 ^f	52.0 ^f	51.8 ^f	53.6 ^f	51.8 ^f	55.2 ^f
5-Year Period Survival (Percent) ^{cd}									
2014	51.6	51.2	52.1	50.8	50.6	51.0	52.4	52.0	52.9
Stage Distribution (%) 2008-2014 ^{ce}									
All Stages									
Number of cases	32,957	18,083	14,874	23,814	13,552	10,262	6,654	3,196	3,458
Percent	100%	100%	100%	100%	100%	100%	100%	100%	100%
Localized	5	6	4	5	6	5	4	4	3
Regional	0	0	0	0	0	0	0	0	0
Distant	95	94	96	95	94	95	96	96	97
Unstaged	0	0	0	0	0	0	0	0	0
5-Year Relative Survival (Percent), 2008-2014 ^c									
Age at Diagnosis:									
Ages <45	75.7	72.5	80.5	76.3	73.4	81.1	72.6	67.7	77.9
Ages 45-54	65.3	63.7	67.3	66.0	64.6	68.1	62.5	59.1	65.5
Ages 55-64	59.1	58.0	60.7	59.5	59.2	60.0	57.8	54.1	61.6
Ages 65-74	51.0	50.6	51.6	51.1	50.1	52.4	50.1	50.8	49.4
Ages 75+	31.4	30.8	31.9	30.8	30.1	31.4	31.5	32.1	31.2
Ages <65	62.7	61.2	64.7	63.1	62.2	64.4	61.0	57.3	64.7
Ages 65+	41.4	41.6	41.2	40.9	40.7	41.0	42.0	44.0	40.6
Stage ^e :									
All Stages	50.7	50.6	50.9	50.0	50.1	49.8	52.1	51.3	52.8
Localized	72.0	73.6	69.6	72.6	73.8	70.6	66.3	70.4 ^g	60.8 ^g
Regional	-	-	-	-	-	-	-	-	-
Distant	49.6	49.2	50.0	48.7	48.6	48.8	51.5	50.4	52.6
Unstaged	-	-	-	-	-	-	-	-	-

^a Based on End Results data from a series of hospital registries and one population-based registry.^b SEER 9 areas (San Francisco, Connecticut, Detroit, Hawaii, Iowa, New Mexico, Seattle, Utah, Atlanta).Based on follow-up of patients into 2015. [Expected survival rates](#) are derived from the U.S. Annual Life Tables.^c SEER 18 areas (San Francisco, Connecticut, Detroit, Hawaii, Iowa, New Mexico, Seattle, Utah, Atlanta, San Jose-Monterey, Los Angeles, Alaska Native Registry, Rural Georgia, California excluding SF/SJM/LA, Kentucky, Louisiana, New Jersey and Georgia excluding ATL/RG). Expected survival rates are derived from life tables by socio-economic status, geography and race developed by the SEER program.^d Based on follow-up of patients into 2015.

Period survival provides a 2014 estimate of survival by piecing together the most recent conditional survival estimates from several cohorts. It is computed here using three year calendar blocks (2010-2012: 0-1 year survival), (2009-2011: 1-2 year survival), (2008-2010: 2-3 year survival), (2007-2009: 3-4 year survival), (2006-2008: 4-5 years survival).

^e Stage at diagnosis is classified using SEER Summary Stage 2000. Stage distribution percentages may not sum to 100 due to rounding.^f The difference between 1975-1977 and 2008-2014 is statistically significant (p<.05).^g The standard error is between 5 and 10 percentage points.^h The standard error is greater than 10 percentage points.

- Statistic could not be calculated due to fewer than 25 cases during the time period.

Table 19.8
Non-Hodgkin Lymphoma

5-Year Relative and Period Survival (Percent) by Race, Sex, Diagnosis Year and Age

	All Races			Whites			Blacks		
	Total	Males	Females	Total	Males	Females	Total	Males	Females
5-Year Relative Survival (Percent)									
Year of Diagnosis:									
1960-1963 ^a	-	-	-	31	31	31	-	-	-
1970-1973 ^a	-	-	-	41	39	43	-	-	-
1975-1977 ^b	46.5	45.6	47.5	46.8	46.3	47.3	48.6	42.6	55.3 ^g
1978-1980 ^b	47.9	46.1	49.8	47.9	46.2	49.5	51.1	46.9	56.7
1981-1983 ^b	50.6	50.3	50.9	50.8	50.5	51.1	49.5	49.2	49.8
1984-1986 ^b	51.6	50.1	53.3	52.0	50.6	53.6	46.8	44.5	49.9
1987-1989 ^b	50.9	47.6	54.9	51.3	48.1	55.2	45.7	41.3	51.0
1990-1992 ^b	50.7	46.7	55.7	51.5	47.6	56.4	42.2	38.2	47.7
1993-1995 ^b	52.6	48.7	57.5	53.3	49.8	57.7	42.3	35.9	54.4
1996-1998 ^b	58.8	57.0	61.0	59.5	57.7	61.5	54.7	53.1	57.2
1999-2001 ^b	63.9	61.4	67.0	64.9	62.8	67.5	55.7	49.0	63.7
2002-2004 ^b	69.8	68.6	71.2	71.0	70.1	72.1	63.5	60.9	66.6
2005-2007 ^b	71.1	70.0	72.5	72.4	71.7	73.3	61.2	54.9	68.0
2008-2014 ^b	74.1 ^f	73.3 ^f	75.0 ^f	74.9 ^f	74.1 ^f	76.0 ^f	69.2 ^f	66.9 ^f	71.7 ^f
5-Year Period Survival (Percent) ^{cd}									
2014	71.7	70.0	73.7	71.9	70.2	74.0	68.0	65.0	71.4
Stage Distribution (%) 2008-2014 ^{ce}									
All Stages									
Number of cases	96,580	52,809	43,771	79,464	43,606	35,858	8,080	4,319	3,761
Percent	100%	100%	100%	100%	100%	100%	100%	100%	100%
Localized	28	27	29	27	26	29	28	25	31
Regional	15	15	15	15	15	15	15	15	15
Distant	50	51	48	50	52	49	51	54	47
Unstaged	8	7	8	7	7	8	6	6	7
5-Year Relative Survival (Percent), 2008-2014 ^c									
Age at Diagnosis:									
Ages <45	83.3	81.0	86.7	84.7	82.4	88.2	73.3	70.4	77.4
Ages 45-54	80.5	77.1	85.4	81.9	78.9	86.5	68.5	63.8	74.9
Ages 55-64	76.6	73.6	80.6	77.6	74.8	81.4	66.3	61.1	73.2
Ages 65-74	71.8	69.9	74.2	72.4	70.2	75.0	66.4	63.0	69.1
Ages 75+	54.7	52.4	56.7	55.0	52.3	57.4	47.4	43.2	49.6
Ages <65	79.5	76.7	83.5	80.6	78.0	84.5	69.6	65.4	75.2
Ages 65+	62.9	61.4	64.4	63.2	61.5	65.1	58.4	55.7	60.0
Stage ^e :									
All Stages	71.4	69.9	73.3	71.8	70.2	73.6	66.2	63.3	69.6
Localized	83.3	82.4	84.2	83.4	82.7	84.2	80.3	76.0	84.1
Regional	75.2	75.0	75.3	75.5	75.3	75.7	70.6	71.8	69.2
Distant	64.1	62.4	66.3	65.0	63.2	67.3	57.6	55.3	60.6
Unstaged	69.6	66.9	72.6	67.3	64.5	70.4	64.1	60.7	66.9

^a Based on End Results data from a series of hospital registries and one population-based registry.^b SEER 9 areas (San Francisco, Connecticut, Detroit, Hawaii, Iowa, New Mexico, Seattle, Utah, Atlanta).Based on follow-up of patients into 2015. [Expected survival rates](#) are derived from the U.S. Annual Life Tables.^c SEER 18 areas (San Francisco, Connecticut, Detroit, Hawaii, Iowa, New Mexico, Seattle, Utah, Atlanta, San Jose-Monterey, Los Angeles, Alaska Native Registry, Rural Georgia, California excluding SF/SJM/LA, Kentucky, Louisiana, New Jersey and Georgia excluding ATL/RG). Expected survival rates are derived from life tables by socio-economic status, geography and race developed by the SEER program.^d Based on follow-up of patients into 2015.

Period survival provides a 2014 estimate of survival by piecing together the most recent conditional survival estimates from several cohorts. It is computed here using three year calendar blocks (2010-2012: 0-1 year survival), (2009-2011: 1-2 year survival), (2008-2010: 2-3 year survival), (2007-2009: 3-4 year survival), (2006-2008: 4-5 years survival).

^e Stage at diagnosis is classified using SEER Summary Stage 2000. Stage distribution percentages may not sum to 100 due to rounding.^f The difference between 1975-1977 and 2008-2014 is statistically significant (p<.05).^g The standard error is between 5 and 10 percentage points.^h The standard error is greater than 10 percentage points.⁻ Statistic could not be calculated due to fewer than 25 cases during the time period.

Table 20.10
Cancer of the Oral Cavity and Pharynx (Invasive)

5-Year Relative and Period Survival (Percent) by Race, Sex, Diagnosis Year, Stage and Age

	All Races			Whites			Blacks		
	Total	Males	Females	Total	Males	Females	Total	Males	Females
5-Year Relative Survival (Percent)									
Year of Diagnosis:									
1960-1963 ^a	-	-	-	45	-	-	-	-	-
1970-1973 ^a	-	-	-	43	-	-	-	-	-
1975-1977 ^b	52.5	51.6	54.8	54.1	53.8	54.7	36.0	29.7	49.0
1978-1980 ^b	53.3	51.8	56.5	55.4	54.5	57.4	34.9	29.8	45.8
1981-1983 ^b	51.7	50.1	55.1	54.0	52.8	56.5	30.9	25.4	45.6
1984-1986 ^b	54.1	51.6	59.0	56.3	54.8	59.4	35.0	29.5	49.1
1987-1989 ^b	53.6	51.0	58.8	55.9	54.1	59.7	34.0	30.0	44.0
1990-1992 ^b	55.4	53.1	60.0	57.9	56.4	61.0	33.1	28.4	46.0
1993-1995 ^b	57.7	56.2	60.5	60.1	59.4	61.3	38.0	33.1	50.5
1996-1998 ^b	57.8	56.2	61.0	59.9	59.1	61.5	36.3	31.3	49.2
1999-2001 ^b	60.3	59.2	62.6	62.2	62.0	62.8	44.6	39.6	57.1
2002-2004 ^b	63.9	63.1	65.7	65.7	65.7	65.7	48.2	42.8	58.8
2005-2007 ^b	65.1	64.6	66.3	67.2	67.0	67.6	43.1	39.5	50.8
2008-2014 ^b	67.9 ^f	67.1 ^f	69.7 ^f	69.7 ^f	69.3 ^f	70.9 ^f	49.6 ^f	48.5 ^f	52.0
5-Year Period Survival (Percent) ^{cd}									
2014	65.3	64.4	67.6	66.6	66.0	68.2	49.4	47.2	54.4
Stage Distribution (%) 2008-2014 ^{ce}									
All Stages									
Number of cases	56,463	40,479	15,984	46,282	33,534	12,748	5,091	3,562	1,529
Percent	100%	100%	100%	100%	100%	100%	100%	100%	100%
Localized	29	24	41	30	25	43	19	14	30
Regional	47	51	38	48	52	38	48	51	41
Distant	20	21	16	18	19	14	30	31	25
Unstaged	4	4	5	4	4	5	3	3	4
5-Year Relative Survival (Percent), 2008-2014 ^c									
Age at Diagnosis:									
Ages <45	80.1	77.3	84.6	81.0	78.6	85.1	72.6	69.1	77.4
Ages 45-54	70.0	69.2	72.8	72.8	72.0	75.6	48.8	48.0	50.8
Ages 55-64	66.2	65.1	69.9	68.4	67.3	72.0	45.5	44.5	48.3
Ages 65-74	61.0	59.2	65.5	62.5	61.1	66.1	44.4	39.9	55.2
Ages 75+	50.2	49.9	50.5	51.0	51.2	50.5	29.9	25.2	35.0
Ages <65	69.6	68.0	74.1	71.5	70.2	75.9	51.0	49.0	55.8
Ages 65+	56.5	55.9	57.7	57.6	57.5	57.9	40.4	36.7	47.0
Stage ^e :									
All Stages	64.8	64.0	66.9	66.3	65.8	67.5	48.1	46.0	53.0
Localized	83.7	82.7	85.1	83.6	83.0	84.5	79.6	75.7	84.1
Regional	65.0	66.2	60.9	66.6	68.0	61.7	47.7	48.0	46.8
Distant	39.1	39.2	38.6	39.9	40.4	38.0	29.1	28.9	29.3
Unstaged	49.2	48.4	50.9	47.0	46.4	48.5	40.7	44.9 ^g	33.3 ^g

^a Based on End Results data from a series of hospital registries and one population-based registry.

^b SEER 9 areas (San Francisco, Connecticut, Detroit, Hawaii, Iowa, New Mexico, Seattle, Utah, Atlanta).

Based on follow-up of patients into 2015. [Expected survival rates](#) are derived from the U.S. Annual Life Tables.

^c SEER 18 areas (San Francisco, Connecticut, Detroit, Hawaii, Iowa, New Mexico, Seattle, Utah, Atlanta, San Jose-Monterey, Los Angeles, Alaska Native Registry, Rural Georgia, California excluding SF/SJM/LA, Kentucky, Louisiana, New Jersey and Georgia excluding ATL/RG). Expected survival rates are derived from life tables by socio-economic status, geography and race developed by the SEER program.

Based on follow-up of patients into 2015.

^d Period survival provides a 2014 estimate of survival by piecing together the most recent conditional survival estimates from several cohorts. It is computed here using three year calendar blocks (2010-2012: 0-1 year survival), (2009-2011: 1-2 year survival), (2008-2010: 2-3 year survival), (2007-2009: 3-4 year survival), (2006-2008: 4-5 years survival).

^e Stage at diagnosis is classified using SEER Summary Stage 2000. Stage distribution percentages may not sum to 100 due to rounding.

^f The difference between 1975-1977 and 2008-2014 is statistically significant ($p < .05$).

^g The standard error is between 5 and 10 percentage points.

^h The standard error is greater than 10 percentage points.

- Statistic could not be calculated due to fewer than 25 cases during the time period.

Table 21.8
Cancer of the Ovary(Invasive)

5-Year Relative and Period Survival (Percent) by Race, Diagnosis Year, Stage and Age

	All Races, Females			White Females			Black Females		
	All	<65	65+	All	<65	65+	All	<65	65+
5-Year Relative Survival (Percent)									
Year of Diagnosis:									
1960-1963 ^a	-	-	-	32	-	-	32	-	-
1970-1973 ^a	-	-	-	36	-	-	32	-	-
1975-1977 ^b	35.9	44.1	21.4	35.3	43.5	21.1	41.6	48.6	24.9 ^g
1978-1980 ^b	37.7	47.3	22.1	36.9	46.5	22.3	38.8	49.2	12.8
1981-1983 ^b	38.9	50.2	23.1	38.5	50.2	23.1	37.5	45.4	22.6
1984-1986 ^b	38.4	49.4	24.1	37.5	48.5	23.8	39.2	51.9	21.2
1987-1989 ^b	38.2	51.1	23.6	38.2	51.3	23.9	33.9	47.2	17.1
1990-1992 ^b	40.6	55.5	24.1	40.4	56.1	24.1	35.5	49.1	16.8
1993-1995 ^b	41.6	55.8	26.5	40.7	55.5	26.0	41.3	54.8	26.4
1996-1998 ^b	43.9	57.1	28.4	43.3	56.6	28.5	39.2	53.3	20.4
1999-2001 ^b	43.9	56.0	28.9	43.6	56.6	28.9	35.6	44.1	21.9
2002-2004 ^b	43.8	57.0	27.0	43.3	56.7	27.2	36.7	46.5	20.8
2005-2007 ^b	44.8	57.8	27.2	44.7	58.2	27.7	37.5	45.9	22.6
2008-2014 ^b	47.7 ^f	60.4 ^f	30.3 ^f	47.4 ^f	60.7 ^f	30.8 ^f	38.5	48.3	22.0
5-Year Period Survival (Percent) ^{cd}									
2014	48.3	60.3	31.5	48.0	60.7	32.1	40.5	51.4	21.3
Stage Distribution (%) 2008-2014 ^{ce}									
All Stages									
Number of cases	34,279	19,461	14,818	27,937	15,256	12,681	3,030	1,835	1,195
Percent	100%	100%	100%	100%	100%	100%	100%	100%	100%
Localized	15	20	8	14	20	7	14	19	7
Regional	20	25	14	20	25	15	16	19	11
Distant	59	52	69	60	52	69	63	57	72
Unstaged	6	3	9	6	3	9	7	5	10
5-Year Relative Survival (Percent), 2008-2014 ^c									
Age at Diagnosis:									
Ages <45	76.9	-	-	77.8	-	-	70.4	-	-
Ages 45-54	60.1	-	-	60.8	-	-	49.0	-	-
Ages 55-64	50.9	-	-	52.1	-	-	37.2	-	-
Ages 65-74	39.6	-	-	40.6	-	-	28.2	-	-
Ages 75+	21.0	-	-	21.8	-	-	10.9	-	-
Ages <65	60.1	-	-	60.6	-	-	50.0	-	-
Ages 65+	30.2	-	-	31.0	-	-	20.4	-	-
Stage ^e :									
All Stages	47.4	60.1	30.2	47.4	60.6	31.0	38.5	50.0	20.4
Localized	92.3	94.0	86.3	93.2	94.9	87.3	85.2	88.3	72.1 ^g
Regional	74.5	81.2	59.1	74.9	82.0	60.2	63.0	71.3	41.1 ^g
Distant	29.2	37.6	20.7	29.6	38.4	21.3	22.3	29.3	13.4
Unstaged	24.8	52.8	10.8	22.6	49.7	10.8	31.6	60.3 ^g	9.3

Ovary excludes borderline cases or histologies 8442, 8451, 8462, 8472, and 8473.

^a Based on End Results data from a series of hospital registries and one population-based registry.

^b SEER 9 areas (San Francisco, Connecticut, Detroit, Hawaii, Iowa, New Mexico, Seattle, Utah, Atlanta).

Based on follow-up of patients into 2015. [Expected survival rates](#) are derived from the U.S. Annual Life Tables.

^c SEER 18 areas (San Francisco, Connecticut, Detroit, Hawaii, Iowa, New Mexico, Seattle, Utah, Atlanta, San Jose-Monterey, Los Angeles, Alaska Native Registry, Rural Georgia, California excluding SF/SJM/LA, Kentucky, Louisiana, New Jersey and Georgia excluding ATL/RG). Expected survival rates are derived from life tables by socio-economic status, geography and race developed by the SEER program.

Based on follow-up of patients into 2015.

^d Period survival provides a 2014 estimate of survival by piecing together the most recent conditional survival estimates from several cohorts. It is computed here using three year calendar blocks (2010-2012: 0-1 year survival), (2009-2011: 1-2 year survival), (2008-2010: 2-3 year survival), (2007-2009: 3-4 year survival), (2006-2008: 4-5 years survival).

^e Stage at diagnosis is classified using SEER Summary Stage 2000. Stage distribution percentages may not sum to 100 due to rounding.

^f The difference between 1975-1977 and 2008-2014 is statistically significant ($p < .05$).

^g The standard error is between 5 and 10 percentage points.

^h The standard error is greater than 10 percentage points.

- Statistic could not be calculated due to fewer than 25 cases during the time period.

Table 22.8
Cancer of the Pancreas (Invasive)

5-Year Relative and Period Survival (Percent) by Race, Sex, Diagnosis Year, Stage and Age

	All Races			Whites			Blacks		
	Total	Males	Females	Total	Males	Females	Total	Males	Females
5-Year Relative Survival (Percent)									
Year of Diagnosis:									
1960-1963 ^a	-	-	-	1	1	2	1	0	3
1970-1973 ^a	-	-	-	2	2	2	2	0	3
1975-1977 ^b	2.5	2.6	2.2	2.5	2.7	2.3	2.3	2.5	1.9
1978-1980 ^b	2.9	2.7	3.0	2.5	2.6	2.5	5.7	4.5	7.0
1981-1983 ^b	2.7	2.4	3.1	2.5	2.1	3.0	3.6	3.7	3.2
1984-1986 ^b	2.9	2.3	3.5	2.6	2.1	3.1	4.7	3.9	5.3
1987-1989 ^b	3.5	3.3	3.7	3.2	3.0	3.3	5.5	5.1	5.8
1990-1992 ^b	4.3	4.1	4.5	4.4	4.2	4.5	3.6	3.2	4.0
1993-1995 ^b	4.0	3.7	4.3	3.9	3.6	4.2	3.7	3.6	3.7
1996-1998 ^b	4.4	4.6	4.1	4.1	4.7	3.6	3.4	3.1	3.5
1999-2001 ^b	5.1	5.2	5.0	5.0	5.5	4.5	5.6	3.7	7.4
2002-2004 ^b	5.6	5.3	5.8	5.7	5.6	5.7	4.5	3.0	5.7
2005-2007 ^b	7.2	6.6	7.8	7.4	6.7	8.2	5.3	5.9	4.8
2008-2014 ^b	9.1 ^f	9.8 ^f	8.4 ^f	9.0 ^f	9.7 ^f	8.2 ^f	9.2 ^f	8.7 ^f	9.6 ^f
5-Year Period Survival (Percent) ^{cd}									
2014	9.4	9.5	9.3	9.2	9.4	9.0	9.7	8.4	10.9
Stage Distribution (%) 2008-2014 ^{ce}									
All Stages									
Number of cases	61,860	31,276	30,584	48,900	25,128	23,772	7,632	3,563	4,069
Percent	100%	100%	100%	100%	100%	100%	100%	100%	100%
Localized	10	9	11	10	9	11	10	9	11
Regional	29	29	30	30	30	30	27	25	28
Distant	52	55	50	52	54	50	56	60	53
Unstaged	8	7	10	9	7	10	7	6	8
5-Year Relative Survival (Percent), 2008-2014 ^c									
Age at Diagnosis:									
Ages <45	32.7	26.1	40.0	32.1	26.7	38.4	33.2	19.9	43.9
Ages 45-54	14.6	12.8	17.4	14.1	12.3	17.0	15.2	13.6	17.1
Ages 55-64	10.0	9.4	10.9	10.1	9.7	10.7	7.9	6.6	9.5
Ages 65-74	7.8	8.3	7.2	8.0	8.5	7.5	6.1	5.0	7.0
Ages 75+	4.0	4.6	3.6	4.0	4.8	3.5	3.6	3.0	3.8
Ages <65	13.1	11.5	15.4	12.9	11.6	14.8	12.4	9.8	15.7
Ages 65+	5.7	6.6	5.0	5.8	6.7	5.0	4.9	4.3	5.2
Stage ^e :									
All Stages	8.5	8.8	8.3	8.4	8.7	8.0	8.6	7.6	9.5
Localized	34.3	36.5	32.4	34.2	37.0	31.7	30.9	25.9	34.1
Regional	11.5	12.4	10.6	11.5	12.4	10.6	12.0	12.8	11.4
Distant	2.7	2.6	2.8	2.7	2.7	2.6	3.0	2.4	3.4
Unstaged	5.5	6.7	4.4	4.7	6.0	3.7	8.9	9.2	8.5

^a Based on End Results data from a series of hospital registries and one population-based registry.

^b SEER 9 areas (San Francisco, Connecticut, Detroit, Hawaii, Iowa, New Mexico, Seattle, Utah, Atlanta).

Based on follow-up of patients into 2015. [Expected survival rates](#) are derived from the U.S. Annual Life Tables.

^c SEER 18 areas (San Francisco, Connecticut, Detroit, Hawaii, Iowa, New Mexico, Seattle, Utah, Atlanta, San Jose-Monterey, Los Angeles, Alaska Native Registry, Rural Georgia, California excluding SF/SJM/LA, Kentucky, Louisiana, New Jersey and Georgia excluding ATL/RG). Expected survival rates are derived from life tables by socio-economic status, geography and race developed by the SEER program.

Based on follow-up of patients into 2015.

^d Period survival provides a 2014 estimate of survival by piecing together the most recent conditional survival estimates from several cohorts. It is computed here using three year calendar blocks (2010-2012: 0-1 year survival), (2009-2011: 1-2 year survival), (2008-2010: 2-3 year survival), (2007-2009: 3-4 year survival), (2006-2008: 4-5 years survival).

^e Stage at diagnosis is classified using SEER Summary Stage 2000. Stage distribution percentages may not sum to 100 due to rounding.

^f The difference between 1975-1977 and 2008-2014 is statistically significant (p<.05).

^g The standard error is between 5 and 10 percentage points.

^h The standard error is greater than 10 percentage points.

- Statistic could not be calculated due to fewer than 25 cases during the time period.

Table 23.8
Cancer of the Prostate (Invasive)

5-Year Relative and Period Survival (Percent) by Race, Diagnosis Year, Stage and Age

	All Races, Males			White Males			Black Males		
	All	<65	65+	All	<65	65+	All	<65	65+
5-Year Relative Survival (Percent)									
Year of Diagnosis:									
1960-1963 ^a	-	-	-	50	-	-	35	-	-
1970-1973 ^a	-	-	-	63	-	-	55	-	-
1975-1977 ^b	67.8	73.4	66.1	68.5	75.2	66.6	60.7	62.0	60.1
1978-1980 ^b	70.1	75.2	68.6	71.2	76.7	69.6	62.1	65.0	60.6
1981-1983 ^b	72.0	76.0	70.9	73.1	77.6	71.9	62.8	65.0	61.9
1984-1986 ^b	75.2	77.4	74.6	76.4	79.1	75.7	65.7	67.3	64.9
1987-1989 ^b	82.8	83.2	82.7	84.4	84.7	84.3	71.1	72.7	70.6
1990-1992 ^b	92.9	93.0	92.9	94.1	94.0	94.1	84.5	86.8	83.6
1993-1995 ^b	95.2	95.9	94.9	96.0	96.6	95.7	91.8	93.4	90.9
1996-1998 ^b	97.4	98.5	96.7	97.9	99.0	97.4	95.0	96.7	93.6
1999-2001 ^b	99.3	99.1	99.3	99.7	99.5	99.6	97.4	98.0	96.4
2002-2004 ^b	99.7	99.5	99.7	99.8	99.6	99.7	97.9	99.1	96.2
2005-2007 ^b	99.6	99.5	99.6	99.8	99.9	99.6	97.6	97.9	97.2
2008-2014 ^b	98.9 ^f	99.4 ^f	98.4 ^f	99.2 ^f	99.7 ^f	98.8 ^f	97.1 ^f	98.2 ^f	95.4 ^f
5-Year Period Survival (Percent) ^{cd}									
2014	97.7	98.4	97.1	97.6	98.5	97.0	95.5	97.4	93.1
Stage Distribution (%) 2008-2014 ^{ce}									
All Stages									
Number of cases	345,915	154,946	190,969	262,495	113,650	148,845	53,692	29,921	23,771
Percent	100%	100%	100%	100%	100%	100%	100%	100%	100%
Localized	78	78	78	78	78	78	80	80	80
Regional	12	16	10	13	17	10	10	13	7
Distant	5	4	6	5	3	6	6	5	8
Unstaged	4	2	6	3	2	5	3	2	5
5-Year Relative Survival (Percent), 2008-2014 ^c									
Age at Diagnosis:									
Ages <45	96.0	-	-	94.9	-	-	97.5	-	-
Ages 45-54	97.7	-	-	97.6	-	-	97.7	-	-
Ages 55-64	99.0	-	-	99.2	-	-	97.5	-	-
Ages 65-74	100.0	-	-	100.0	-	-	97.1	-	-
Ages 75+	92.4	-	-	92.1	-	-	85.2	-	-
Ages <65	98.6	-	-	98.8	-	-	97.6	-	-
Ages 65+	97.9	-	-	98.0	-	-	94.1	-	-
Stage ^e :									
All Stages	98.2	98.6	97.9	98.3	98.8	98.0	96.1	97.6	94.1
Localized	100.0	100.0	100.0	100.0	100.0	100.0	100.0	100.0	100.0
Regional	100.0	100.0	100.0	100.0	99.8	100.0	100.0	100.0	99.3
Distant	30.0	33.6	28.3	29.1	32.7	27.6	30.0	33.3	27.3
Unstaged	80.9	91.1	77.5	73.8	88.0	69.6	68.7	84.8	60.7

^a Based on End Results data from a series of hospital registries and one population-based registry.

^b SEER 9 areas (San Francisco, Connecticut, Detroit, Hawaii, Iowa, New Mexico, Seattle, Utah, Atlanta).

Based on follow-up of patients into 2015. [Expected survival rates](#) are derived from the U.S. Annual Life Tables.

^c SEER 18 areas (San Francisco, Connecticut, Detroit, Hawaii, Iowa, New Mexico, Seattle, Utah, Atlanta, San Jose-Monterey, Los Angeles, Alaska Native Registry, Rural Georgia, California excluding SF/SJM/LA, Kentucky, Louisiana, New Jersey and Georgia excluding ATL/RG). Expected survival rates are derived from life tables by socio-economic status, geography and race developed by the SEER program.

Based on follow-up of patients into 2015.

^d Period survival provides a 2014 estimate of survival by piecing together the most recent conditional survival estimates from several cohorts. It is computed here using three year calendar blocks (2010-2012: 0-1 year survival), (2009-2011: 1-2 year survival), (2008-2010: 2-3 year survival), (2007-2009: 3-4 year survival), (2006-2008: 4-5 years survival).

^e Stage at diagnosis is classified using SEER Summary Stage 2000. Stage distribution percentages may not sum to 100 due to rounding.

^f The difference between 1975-1977 and 2008-2014 is statistically significant (p<.05).

^g The standard error is between 5 and 10 percentage points.

^h The standard error is greater than 10 percentage points.

- Statistic could not be calculated due to fewer than 25 cases during the time period.

Table 24.8
Cancer of the Stomach (Invasive)

5-Year Relative and Period Survival (Percent) by Race, Sex, Diagnosis Year, Stage and Age

	All Races			Whites			Blacks		
	Total	Males	Females	Total	Males	Females	Total	Males	Females
5-Year Relative Survival (Percent)									
Year of Diagnosis:									
1960-1963 ^a	-	-	-	11	10	13	8	5	14
1970-1973 ^a	-	-	-	13	12	14	13	15	10
1975-1977 ^b	15.2	14.4	16.6	14.1	13.1	15.8	16.1	16.1	16.1
1978-1980 ^b	16.1	14.3	18.9	15.4	13.6	18.2	16.4	15.6	18.0
1981-1983 ^b	17.3	16.4	18.7	16.2	15.4	17.5	16.5	16.2	17.1
1984-1986 ^b	17.6	15.6	20.9	16.8	14.3	20.9	19.1	16.9	22.1
1987-1989 ^b	19.7	17.0	24.3	18.3	15.5	23.1	18.8	16.6	22.5
1990-1992 ^b	20.9	18.1	25.4	18.8	16.1	23.2	22.7	22.0	23.7
1993-1995 ^b	21.0	20.1	22.6	20.0	18.9	21.9	19.3	17.5	21.9
1996-1998 ^b	22.3	21.1	24.2	20.4	18.7	23.3	22.6	20.4	25.3
1999-2001 ^b	24.1	23.4	25.2	22.3	21.1	24.4	23.1	24.9	20.6
2002-2004 ^b	27.5	25.1	31.1	26.0	24.0	29.5	29.2	24.8	34.5
2005-2007 ^b	28.8	27.3	31.2	28.1	27.4	29.5	26.8	20.8	35.6
2008-2014 ^b	32.1 ^f	29.8 ^f	35.9 ^f	31.1 ^f	28.9 ^f	35.1 ^f	32.5 ^f	27.3 ^f	38.5 ^f
5-Year Period Survival (Percent) ^{cd}									
2014	31.8	28.8	36.6	30.7	27.6	35.9	32.0	26.0	39.9
Stage Distribution (%) 2008-2014 ^{ce}									
All Stages									
Number of cases	36,847	22,332	14,515	25,750	16,133	9,617	5,089	2,851	2,238
Percent	100%	100%	100%	100%	100%	100%	100%	100%	100%
Localized	28	25	32	27	24	32	29	26	32
Regional	27	29	24	27	29	23	27	27	25
Distant	35	38	32	37	39	33	35	39	32
Unstaged	10	9	12	10	9	12	9	8	11
5-Year Relative Survival (Percent), 2008-2014 ^c									
Age at Diagnosis:									
Ages <45	34.4	30.6	38.5	32.8	28.9	37.3	36.5	32.1	40.4
Ages 45-54	34.6	31.1	40.6	33.1	29.4	40.2	36.2	31.3	43.8
Ages 55-64	34.1	31.0	40.7	32.8	29.9	39.7	34.2	28.5	44.0
Ages 65-74	34.0	30.1	41.2	32.3	29.0	39.2	31.3	24.5	41.9
Ages 75+	23.7	21.9	25.7	22.7	20.3	25.6	21.9	18.3	24.5
Ages <65	34.3	31.0	40.2	32.9	29.6	39.4	35.2	29.9	43.3
Ages 65+	28.4	26.1	31.6	27.1	24.7	30.7	26.7	21.9	31.7
Stage ^e :									
All Stages	31.0	28.4	35.1	29.6	27.0	34.2	31.1	26.4	37.0
Localized	68.1	64.4	72.6	66.9	63.3	71.4	65.4	58.2	72.7
Regional	30.6	30.3	31.2	29.1	28.8	29.9	31.0	31.1	30.9
Distant	5.2	5.4	4.8	5.0	5.4	4.2	6.2	4.9	8.4
Unstaged	22.7	19.3	26.5	22.2	18.3	26.9	21.1	13.8	27.1

^a Based on End Results data from a series of hospital registries and one population-based registry.

^b SEER 9 areas (San Francisco, Connecticut, Detroit, Hawaii, Iowa, New Mexico, Seattle, Utah, Atlanta).

Based on follow-up of patients into 2015. [Expected survival rates](#) are derived from the U.S. Annual Life Tables.

^c SEER 18 areas (San Francisco, Connecticut, Detroit, Hawaii, Iowa, New Mexico, Seattle, Utah, Atlanta, San Jose-Monterey, Los Angeles, Alaska Native Registry, Rural Georgia, California excluding SF/SJM/LA, Kentucky, Louisiana, New Jersey and Georgia excluding ATL/RG). Expected survival rates are derived from life tables by socio-economic status, geography and race developed by the SEER program.

Based on follow-up of patients into 2015.

^d Period survival provides a 2014 estimate of survival by piecing together the most recent conditional survival estimates from several cohorts. It is computed here using three year calendar blocks (2010-2012: 0-1 year survival), (2009-2011: 1-2 year survival), (2008-2010: 2-3 year survival), (2007-2009: 3-4 year survival), (2006-2008: 4-5 years survival).

^e Stage at diagnosis is classified using SEER Summary Stage 2000. Stage distribution percentages may not sum to 100 due to rounding.

^f The difference between 1975-1977 and 2008-2014 is statistically significant ($p < .05$).

^g The standard error is between 5 and 10 percentage points.

^h The standard error is greater than 10 percentage points.

- Statistic could not be calculated due to fewer than 25 cases during the time period.

Table 25.8
Cancer of the Testis (Invasive)

5-Year Relative and Period Survival (Percent) by Race, Diagnosis Year, Stage and Age

	All Races, Males			White Males			Black Males		
	All	<50	50+	All	<50	50+	All	<50	50+
5-Year Relative Survival (Percent)									
Year of Diagnosis:									
1960-1963 ^a	-	-	-	63	-	-	-	-	-
1970-1973 ^a	-	-	-	72	-	-	-	-	-
1975-1977 ^b	82.6	83.3	77.6	82.6	83.3	77.3	-	-	-
1978-1980 ^b	88.8	89.5	82.2	89.2	89.8	83.1	73.1 ^g	78.0 ^g	-
1981-1983 ^b	92.0	92.5	85.5	92.2	92.8	86.2	87.7 ^g	84.7 ^g	-
1984-1986 ^b	92.6	93.6	80.4	92.9	94.0	80.6	87.0 ^g	89.4 ^g	-
1987-1989 ^b	95.2	95.0	95.7	95.5	95.4	95.3	88.4 ^g	87.8 ^g	-
1990-1992 ^b	95.8	95.8	93.7	96.2	96.1	94.6	84.2 ^g	89.0 ^g	-
1993-1995 ^b	95.8	96.4	86.7	96.1	96.6	87.8	88.0	89.4	-
1996-1998 ^b	95.6	96.3	86.6	95.8	96.5	86.6	89.0	90.3	-
1999-2001 ^b	96.2	96.4	91.9	96.5	96.7	92.8	87.6	89.0	-
2002-2004 ^b	96.0	96.5	89.8	96.5	97.0	91.0	84.7 ^g	84.8 ^g	-
2005-2007 ^b	96.8	97.1	94.4	97.4	97.6	95.1	91.5	90.8	-
2008-2014 ^b	96.9 ^f	97.0 ^f	94.9 ^f	97.2 ^f	97.3 ^f	95.5 ^f	91.5	91.4	91.9 ^g
5-Year Period Survival (Percent) ^{cd}									
2014	95.0	95.6	90.5	95.2	95.8	90.4	89.6	89.9	87.2
Stage Distribution (%) 2008-2014 ^{ce}									
All Stages									
Number of cases	16,266	14,330	1,936	14,511	12,764	1,747	526	447	79
Percent	100%	100%	100%	100%	100%	100%	100%	100%	100%
Localized	68	68	67	68	68	66	61	60	71
Regional	19	19	18	19	19	19	21	23	13
Distant	12	12	13	12	12	13	14	15	10
Unstaged	1	1	2	1	1	2	3	2	6
5-Year Relative Survival (Percent), 2008-2014 ^c									
Age at Diagnosis:									
Ages <45	95.6	-	-	95.7	-	-	92.2	-	-
Ages 45-54	95.4	-	-	95.5	-	-	90.8	-	-
Ages 55-64	92.0	-	-	91.6	-	-	97.1	-	-
Ages 65-74	87.1	-	-	87.3	-	-	-	-	-
Ages 75+	80.5 ^g	-	-	83.6 ^g	-	-	-	-	-
Ages <65	95.4	-	-	95.5	-	-	92.5	-	-
Ages 65+	85.8	-	-	87.3	-	-	-	-	-
Stage ^e :									
All Stages	95.3	95.6	92.5	95.4	95.7	92.7	91.8	92.5	87.1
Localized	99.2	99.1	99.1	99.2	99.1	99.1	97.4	97.7	95.0
Regional	96.0	96.4	92.8	96.2	96.6	93.3	90.4	91.2	-
Distant	73.7	75.6	59.7	74.3	76.2	60.3	69.7 ^g	72.1 ^g	-
Unstaged	79.7	86.9	53.1 ^g	77.4	84.8	50.5 ^g	-	-	-

^a Based on End Results data from a series of hospital registries and one population-based registry.

^b SEER 9 areas (San Francisco, Connecticut, Detroit, Hawaii, Iowa, New Mexico, Seattle, Utah, Atlanta).

Based on follow-up of patients into 2015. [Expected survival rates](#) are derived from the U.S. Annual Life Tables.

^c SEER 18 areas (San Francisco, Connecticut, Detroit, Hawaii, Iowa, New Mexico, Seattle, Utah, Atlanta, San Jose-Monterey, Los Angeles, Alaska Native Registry, Rural Georgia, California excluding SF/SJM/LA, Kentucky, Louisiana, New Jersey and Georgia excluding ATL/RG). Expected survival rates are derived from life tables by socio-economic status, geography and race developed by the SEER program.

Based on follow-up of patients into 2015.

^d Period survival provides a 2014 estimate of survival by piecing together the most recent conditional survival estimates from several cohorts. It is computed here using three year calendar blocks (2010-2012: 0-1 year survival), (2009-2011: 1-2 year survival), (2008-2010: 2-3 year survival), (2007-2009: 3-4 year survival), (2006-2008: 4-5 years survival).

^e Stage at diagnosis is classified using SEER Summary Stage 2000. Stage distribution percentages may not sum to 100 due to rounding.

^f The difference between 1975-1977 and 2008-2014 is statistically significant (p<.05).

^g The standard error is between 5 and 10 percentage points.

^h The standard error is greater than 10 percentage points.

- Statistic could not be calculated due to fewer than 25 cases during the time period.

Table 26.8
Cancer of the Thyroid (Invasive)

5-Year Relative and Period Survival (Percent) by Race, Sex, Diagnosis Year, Stage and Age

	All Races			Whites			Blacks		
	Total	Males	Females	Total	Males	Females	Total	Males	Females
5-Year Relative Survival (Percent)									
Year of Diagnosis:									
1960-1963 ^a	-	-	-	83	75	87	-	-	-
1970-1973 ^a	-	-	-	86	82	87	-	-	-
1975-1977 ^b	92.1	91.1	92.5	91.8	90.7	92.2	89.8	-	91.0
1978-1980 ^b	92.1	87.2	93.6	91.5	87.5	92.7	90.2	68.0 ^h	95.5
1981-1983 ^b	93.6	92.2	93.9	93.1	90.9	93.7	96.4	100.0	93.2
1984-1986 ^b	93.2	89.8	94.3	93.2	89.4	94.4	89.3	85.5 ^g	90.3
1987-1989 ^b	94.4	91.6	95.2	94.1	91.6	95.0	92.3	91.2 ^g	92.3
1990-1992 ^b	94.3	90.5	95.5	94.9	91.6	96.0	85.9	84.5 ^g	86.3
1993-1995 ^b	95.4	91.6	96.7	95.6	91.5	96.9	93.2	87.8 ^g	94.3
1996-1998 ^b	95.6	91.0	96.9	95.9	91.3	97.3	95.1	86.5 ^g	96.6
1999-2001 ^b	96.5	94.3	97.1	96.8	94.9	97.4	92.0	88.4 ^g	92.4
2002-2004 ^b	97.3	93.9	98.2	97.4	94.1	98.3	95.9	94.2	96.0
2005-2007 ^b	97.9	96.1	98.5	98.0	96.1	98.6	96.3	91.5	96.9
2008-2014 ^b	98.3 ^f	96.0 ^f	98.9 ^f	98.6 ^f	96.5 ^f	99.2 ^f	97.0 ^f	91.3	97.9 ^f
5-Year Period Survival (Percent) ^{cd}									
2014	98.2	95.8	98.9	98.4	96.1	99.0	96.9	92.8	97.4
Stage Distribution (%) 2008-2014 ^{ce}									
All Stages									
Number of cases	74,280	17,072	57,208	59,623	14,147	45,476	5,139	909	4,230
Percent	100%	100%	100%	100%	100%	100%	100%	100%	100%
Localized	67	58	70	67	58	70	80	72	81
Regional	27	33	25	27	34	25	14	18	13
Distant	4	7	3	4	6	3	4	8	4
Unstaged	2	2	2	2	2	2	2	2	2
5-Year Relative Survival (Percent), 2008-2014 ^c									
Age at Diagnosis:									
Ages <45	99.7	99.1	99.8	99.7	99.3	99.8	99.2	96.5	99.5
Ages 45-54	98.8	96.2	99.5	98.8	96.4	99.5	99.0	95.9	99.5
Ages 55-64	98.0	95.2	98.9	98.3	95.3	99.2	95.6	92.0	96.3
Ages 65-74	96.3	91.7	97.4	96.6	92.3	97.7	93.9	82.2 ^g	96.5
Ages 75+	86.3	84.7	86.7	88.4	86.3	88.8	75.4	72.8 ^g	73.9
Ages <65	99.1	97.1	99.6	99.1	97.2	99.6	98.3	95.2	99.0
Ages 65+	93.2	89.6	94.3	94.2	90.5	94.9	88.9	82.4 ^g	90.3
Stage ^e :									
All Stages	98.1	95.6	98.8	98.3	95.8	99.0	97.2	92.9	97.7
Localized	99.9	99.8	100.0	99.9	99.8	100.0	99.8	98.9	99.9
Regional	98.0	96.4	98.7	98.2	96.6	98.9	94.4	89.6	95.8
Distant	55.5	50.9	58.3	55.8	50.7	59.2	47.0	42.4 ^g	48.7
Unstaged	89.1	83.6	90.9	88.4	84.5	89.7	88.7	-	91.5

^a Based on End Results data from a series of hospital registries and one population-based registry.

^b SEER 9 areas (San Francisco, Connecticut, Detroit, Hawaii, Iowa, New Mexico, Seattle, Utah, Atlanta).

Based on follow-up of patients into 2015. [Expected survival rates](#) are derived from the U.S. Annual Life Tables.

^c SEER 18 areas (San Francisco, Connecticut, Detroit, Hawaii, Iowa, New Mexico, Seattle, Utah, Atlanta, San Jose-Monterey, Los Angeles, Alaska Native Registry, Rural Georgia, California excluding SF/SJM/LA, Kentucky, Louisiana, New Jersey and Georgia excluding ATL/RG). Expected survival rates are derived from life tables by socio-economic status, geography and race developed by the SEER program.

Based on follow-up of patients into 2015.

^d Period survival provides a 2014 estimate of survival by piecing together the most recent conditional survival estimates from several cohorts. It is computed here using three year calendar blocks (2010-2012: 0-1 year survival), (2009-2011: 1-2 year survival), (2008-2010: 2-3 year survival), (2007-2009: 3-4 year survival), (2006-2008: 4-5 years survival).

^e Stage at diagnosis is classified using SEER Summary Stage 2000. Stage distribution percentages may not sum to 100 due to rounding.

^f The difference between 1975-1977 and 2008-2014 is statistically significant ($p < .05$).

^g The standard error is between 5 and 10 percentage points.

^h The standard error is greater than 10 percentage points.

- Statistic could not be calculated due to fewer than 25 cases during the time period.

Table 27.8
Cancer of the Urinary Bladder (Invasive and *In Situ*)

5-Year Relative and Period Survival (Percent) by Race, Sex, Diagnosis Year, Stage and Age

	All Races			Whites			Blacks		
	Total	Males	Females	Total	Males	Females	Total	Males	Females
5-Year Relative Survival (Percent)									
Year of Diagnosis:									
1960-1963 ^a	-	-	-	53	53	53	24	24	24
1970-1973 ^a	-	-	-	61	61	60	36	38	27
1975-1977 ^b	72.3	73.7	68.3	73.3	74.3	70.3	50.3	56.5	38.1 ^g
1978-1980 ^b	73.9	75.1	70.4	74.7	75.4	72.3	54.5	62.6	40.1
1981-1983 ^b	76.7	78.1	72.7	77.4	78.6	74.0	59.5	64.9	47.0 ^g
1984-1986 ^b	76.7	78.1	72.7	77.2	78.4	73.6	59.4	62.3	52.8
1987-1989 ^b	79.0	81.3	71.9	79.8	82.0	73.1	62.6	67.5	52.9
1990-1992 ^b	79.2	81.7	71.8	80.2	82.6	73.1	63.2	65.9	58.5
1993-1995 ^b	80.2	82.1	75.0	81.1	82.5	76.9	60.8	68.1	46.2
1996-1998 ^b	79.1	80.4	75.4	79.8	81.1	75.9	62.9	65.9	56.0
1999-2001 ^b	80.0	80.9	77.3	81.0	81.5	79.4	67.8	72.2	60.1
2002-2004 ^b	79.9	81.7	74.7	80.8	82.4	76.3	61.3	66.5	52.1
2005-2007 ^b	79.9	81.5	75.1	80.6	82.0	76.2	64.7	68.5	57.1
2008-2014 ^b	77.9 ^f	78.9 ^f	74.7 ^f	78.6 ^f	79.4 ^f	76.1 ^f	63.9 ^f	67.8 ^f	56.0 ^f
5-Year Period Survival (Percent) ^{cd}									
2014	76.5	77.9	72.3	77.0	78.1	73.3	62.2	65.5	55.4
Stage Distribution (%) 2008-2014 ^{ce}									
All Stages									
Number of cases	89,794	67,859	21,935	79,099	60,268	18,831	5,091	3,387	1,704
Percent	100%	100%	100%	100%	100%	100%	100%	100%	100%
In Situ	51	52	50	52	52	51	40	44	33
Localized	34	35	33	34	35	33	37	36	39
Regional	7	7	8	7	7	8	11	9	14
Distant	4	4	6	4	4	5	8	7	10
Unstaged	3	3	3	3	2	3	4	4	4
5-Year Relative Survival (Percent), 2008-2014 ^c									
Age at Diagnosis:									
Ages <45	88.3	90.1	83.8	89.1	90.5	85.7	75.5	80.2	63.3 ^g
Ages 45-54	84.0	84.7	81.7	85.2	85.6	83.9	68.5	72.2	58.5
Ages 55-64	81.7	81.9	80.8	82.3	82.3	82.5	67.0	68.9	61.2
Ages 65-74	79.9	80.6	77.4	80.3	81.0	77.8	65.2	66.9	61.6
Ages 75+	68.8	70.7	63.8	69.4	70.9	65.1	53.4	59.9	45.2
Ages <65	82.8	83.2	81.4	83.6	83.7	83.2	68.1	70.8	60.8
Ages 65+	73.8	75.4	69.1	74.3	75.7	70.1	59.1	63.7	51.9
Stage ^e :									
All Stages	76.8	78.1	72.9	77.3	78.3	74.1	63.0	67.1	55.0
In Situ	95.4	95.0	96.8	95.4	94.9	97.1	91.2	91.7	90.1
Localized	69.4	71.5	62.5	69.7	71.7	63.1	58.4	63.0	49.6
Regional	34.9	36.3	31.4	35.7	37.2	31.3	27.5	23.7	31.7
Distant	4.8	5.2	4.0	4.8	4.8	4.4	3.4	4.6	1.4
Unstaged	46.0	50.4	35.4	44.0	48.0	34.1	38.2	48.2 ^g	19.0 ^g

^a Based on End Results data from a series of hospital registries and one population-based registry.

^b SEER 9 areas (San Francisco, Connecticut, Detroit, Hawaii, Iowa, New Mexico, Seattle, Utah, Atlanta).

Based on follow-up of patients into 2015. [Expected survival rates](#) are derived from the U.S. Annual Life Tables.

^c SEER 18 areas (San Francisco, Connecticut, Detroit, Hawaii, Iowa, New Mexico, Seattle, Utah, Atlanta, San Jose-Monterey, Los Angeles, Alaska Native Registry, Rural Georgia, California excluding SF/SJM/LA, Kentucky, Louisiana, New Jersey and Georgia excluding ATL/RG). Expected survival rates are derived from life tables by socio-economic status, geography and race developed by the SEER program.

Based on follow-up of patients into 2015.

^d Period survival provides a 2014 estimate of survival by piecing together the most recent conditional survival estimates from several cohorts. It is computed here using three year calendar blocks (2010-2012: 0-1 year survival), (2009-2011: 1-2 year survival), (2008-2010: 2-3 year survival), (2007-2009: 3-4 year survival), (2006-2008: 4-5 years survival).

^e Stage at diagnosis is classified using SEER Summary Stage 2000. Stage distribution percentages may not sum to 100 due to rounding.

^f The difference between 1975-1977 and 2008-2014 is statistically significant ($p < .05$).

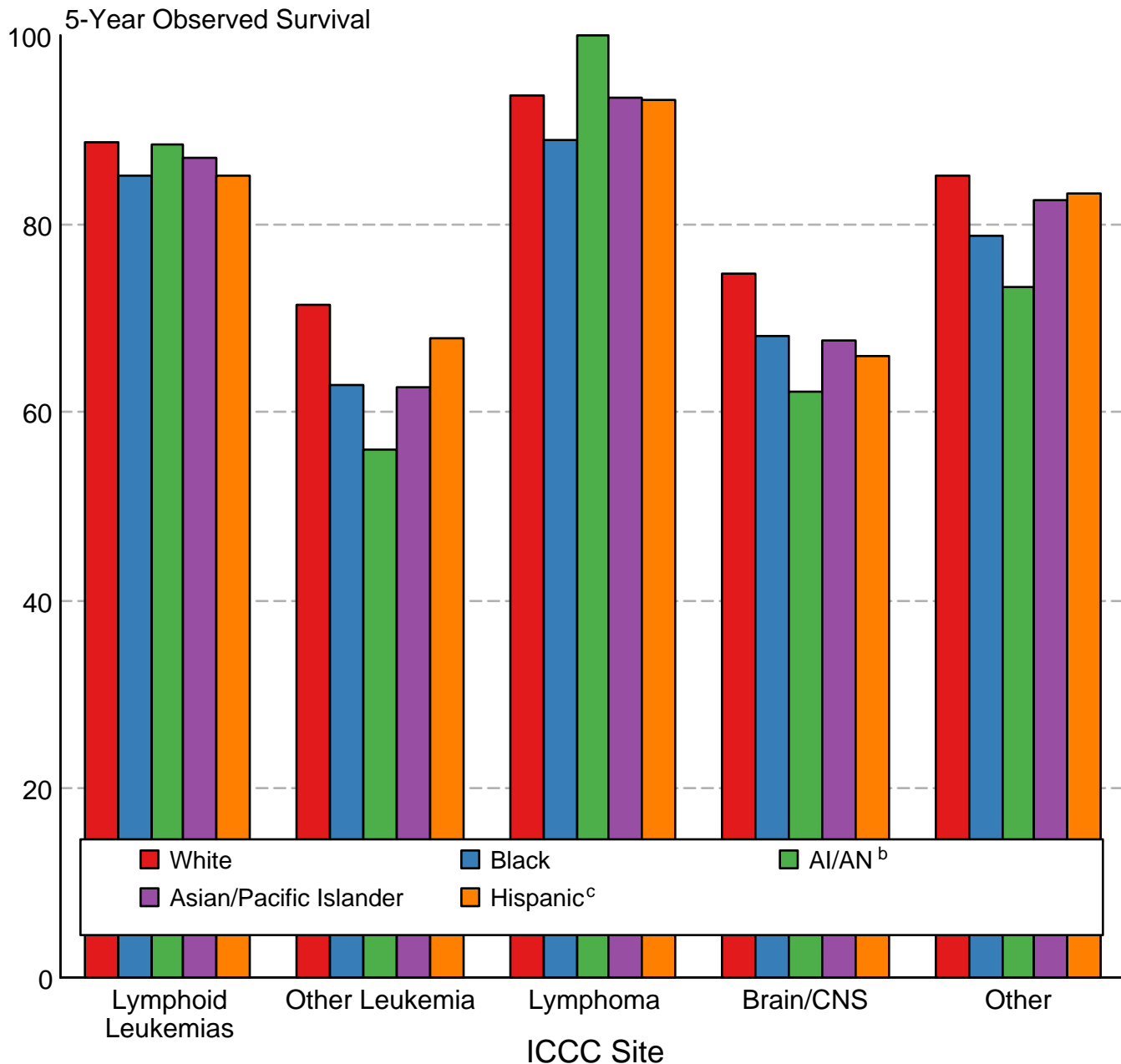
^g The standard error is between 5 and 10 percentage points.

^h The standard error is greater than 10 percentage points.

- Statistic could not be calculated due to fewer than 25 cases during the time period.

Figure 29.3

Childhood Cancer 5-Year Observed Survival (%) by ICCC Group^a and Race/Ethnicity Both Sexes, Under 20 Years of Age, 2008-2014



Source: SEER 18 areas (San Francisco, Connecticut, Detroit, Hawaii, Iowa, New Mexico, Seattle, Utah, Atlanta, San Jose-Monterey, Los Angeles, Alaska Native Registry, Rural Georgia, California excluding SF/SJM/LA, Kentucky, Louisiana, New Jersey and Georgia excluding ATL/RG).

International Classification of Childhood Cancer is based on ICD-O-3. Steliarova-Foucher E, Stiller C, Lacour B, Kaatsch P. International Classification of Childhood Cancer, Third Edition. Cancer. April 1, 2005; Vol 103, No. 7, pg 1457-1467.

^a Excludes myelodysplastic syndromes (MDS) and benign brain tumors.

^b American Indian/Alaska Native. Survival data for American Indian/Alaska Native are based on the CHSDA (Contract Health Service Delivery Area) counties.

^c Hispanic is not mutually exclusive from whites, blacks, Asian/Pacific Islanders, and American Indians/Alaska Natives. Survival data for Hispanics are based on NHIA and excludes cases from the Alaska Native Registry.